



**Electrical specifications**

**Center Frequency:** 1575 MHz  
**Bandwidth:** 2 MHz  
**Input / Output Impedance:** 50 Ohms  
**Passband:** 1574.4-1576.4 MHz  
**Passband Insertion Loss:** 1574.4-1576.4 MHz 1.0 dB  
**Passband Ripple:** 1.8 dB max  
**VSWR:** 1.5:1 Max  
**Rejection:** 1525.4 MHz 17.0 dB min  
**Rejection 2:** 1625.4 MHz 17.0 dB min  
**Power Handling:** 5 W

**Mechanical**

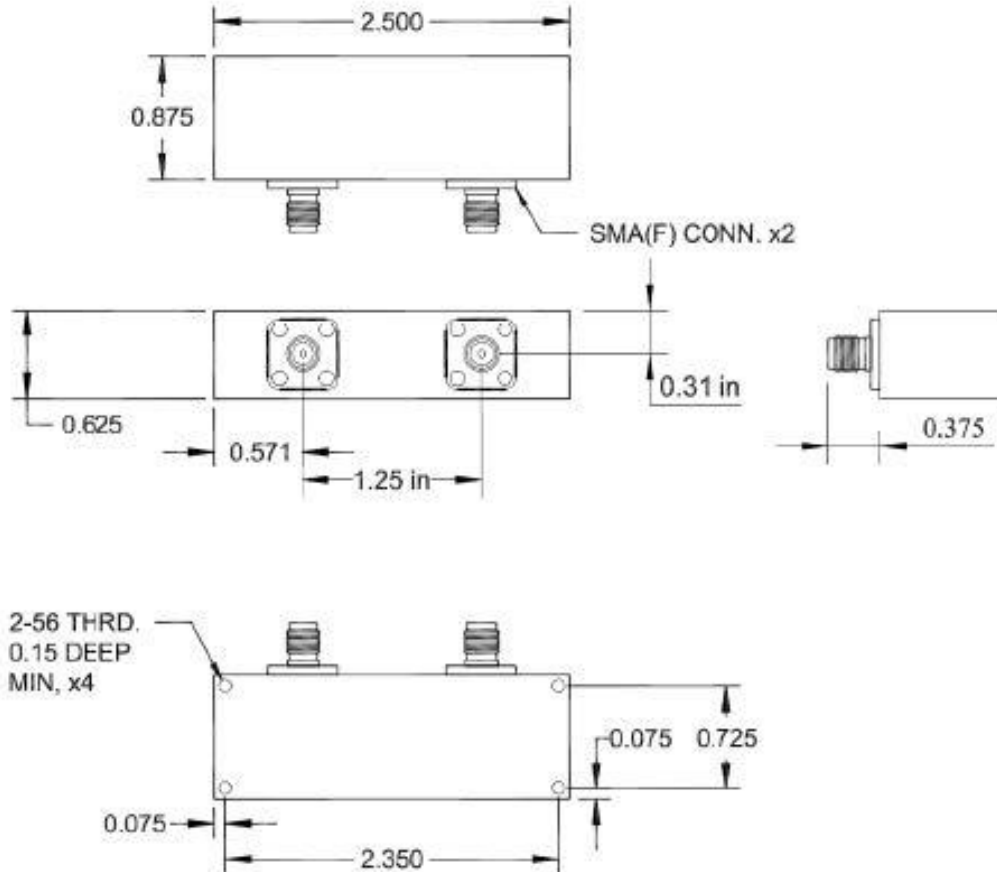
**Mounting Method:** Threaded Mounting Holes  
**Connector Type:** SMA (F)  
**Dimensions:** 2.50 x 0.875 x 0.625 Inches

**Environmental**

**Operating Temperature:** -40°C to +85°C  
**Storage Temperature:** -50°C to +90°C

**This product is RoHs compliant.**

**Outline Drawing:**





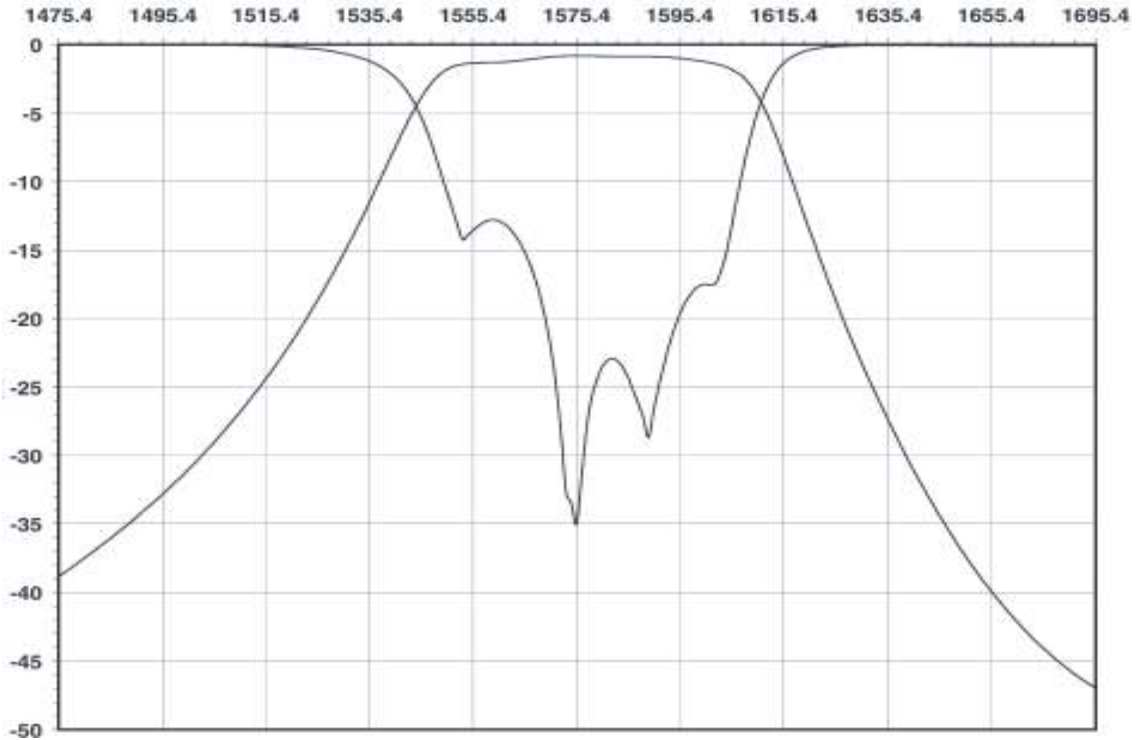
**ANATECH ELECTRONICS INC**  
RF & Microwave Filters & Products

# GPS Ceramic BPF

## Part Number: AM1575B316



### Response Plot:



Available at our Web store:

70 Outwater Lane Phone: (973) 772-4242  
Garfield, NJ 07026 Fax : (973) 772-4646



Email: [sales@anatechelectronics.com](mailto:sales@anatechelectronics.com)  
Web: [www.anatechelectronics.com](http://www.anatechelectronics.com)