

PART  
NAME

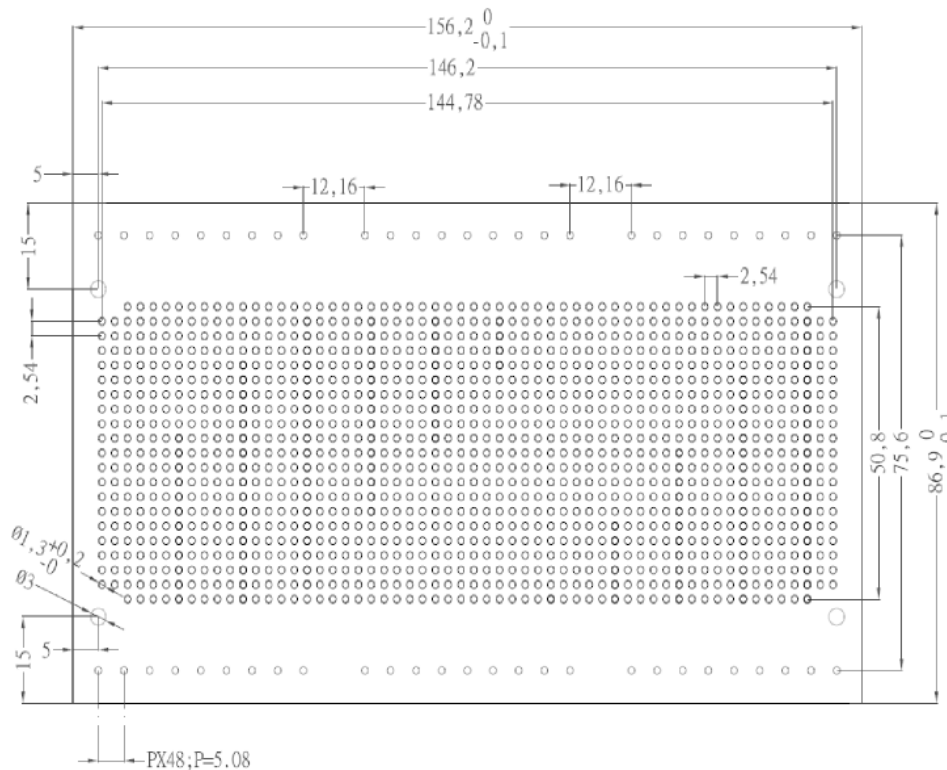
PCB FOR DIN RAIL MOUNT BOX

PART  
No.

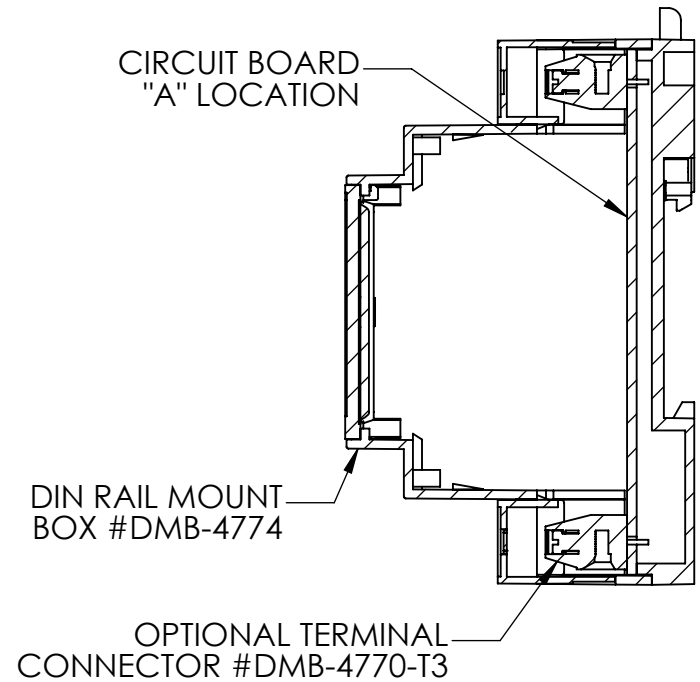
DMB-4774-CB

REV.  
DATE

8-2-12



PCB THICKNESS: 1.6mm



NOTES:  
DIMENSIONS IN MM.

DESIGNED TO FIT CIRCUIT BOARD  
"A" LOCATION OF THE DIN RAIL  
MOUNT MULT-BOARD BOX.

PRE PLATED HOLES FOR EASY  
SOLDERING.

TERMINALS CAN BE USED IN  
MULTIPLES OF (3)