

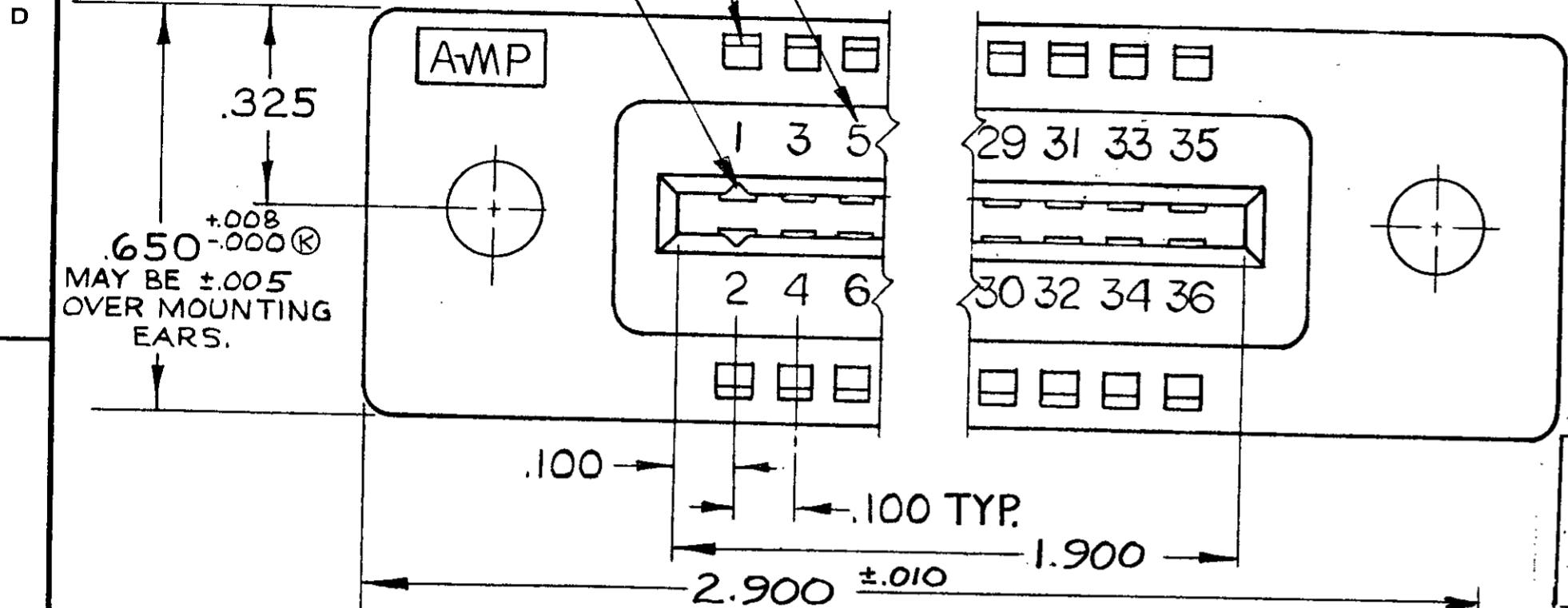
© 1967 BY AMP INCORPORATED. ALL RIGHTS RESERVED. AMP PRODUCTS COVERED BY PATENTS AND/OR PATENTS PENDING. APPROVED PER GOVT CONTRACT NO.

LOCATION FOR AMP-TAB FEMALE CONTACT

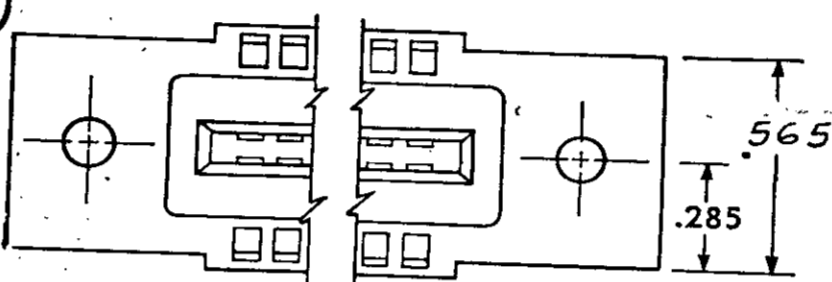
CAVITY IDENTIFICATION ON P/N (I)-582587-T ONLY.

(I)-582587-1. SAME AS -1 EXCEPT TO HAVE CAVITY IDENT. ON TOP SURFACE OF HOUSING.

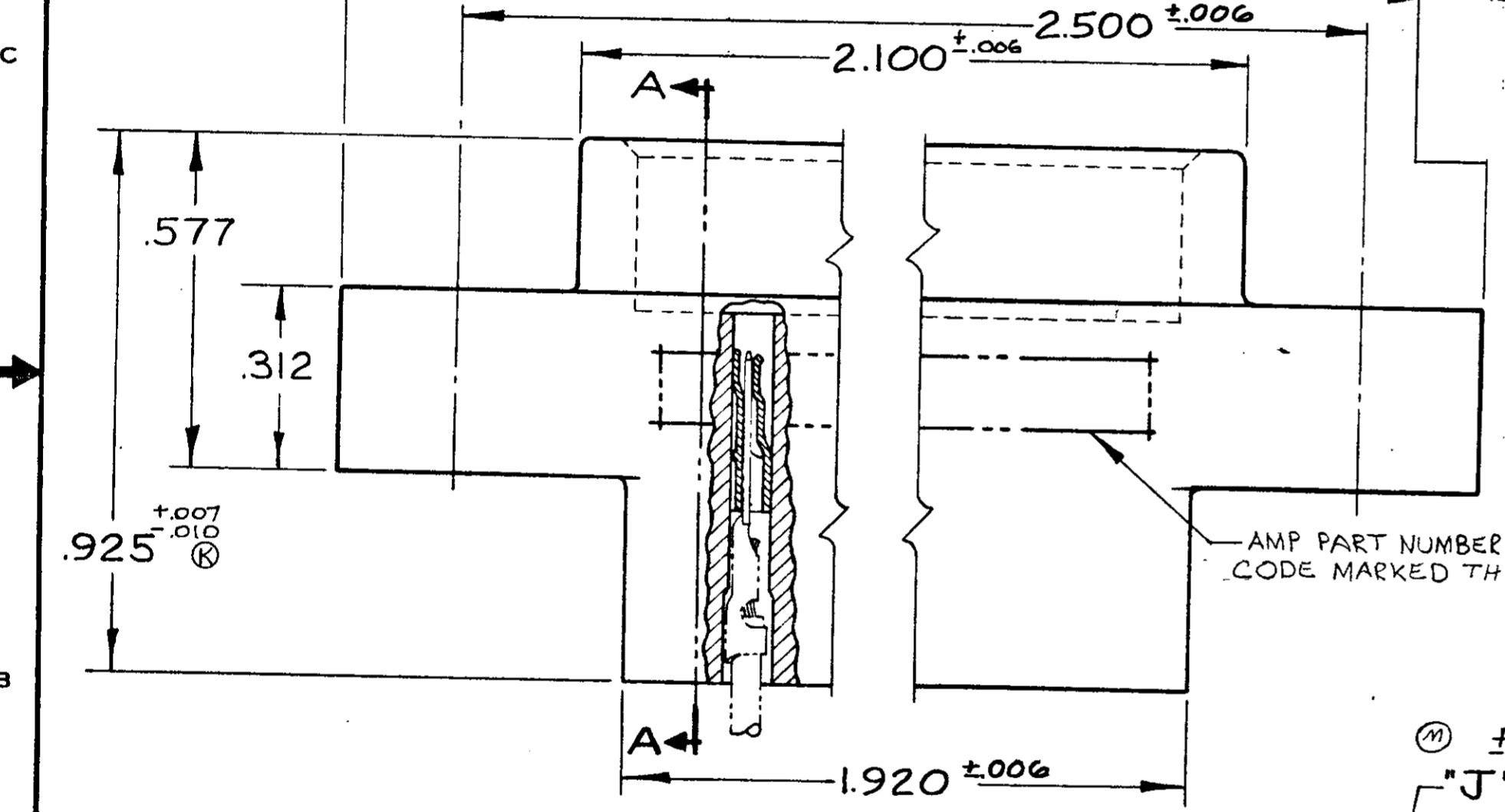
ZONE		LTR		DESCRIPTION	DATE	APPROVED
				T	ECO-08-020973	PY 11-08 JW



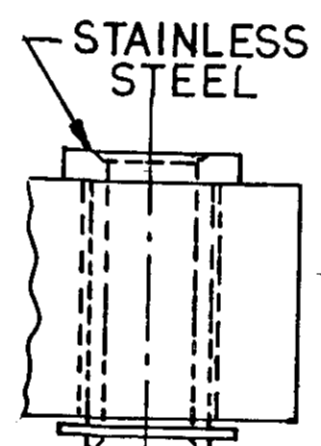
582587-1 1. AS SHOWN "J" DIA. HOLES = .128  
 OBS 582587-2 1. SAME AS -1 EXCEPT: "J" DIA. HOLES = .156



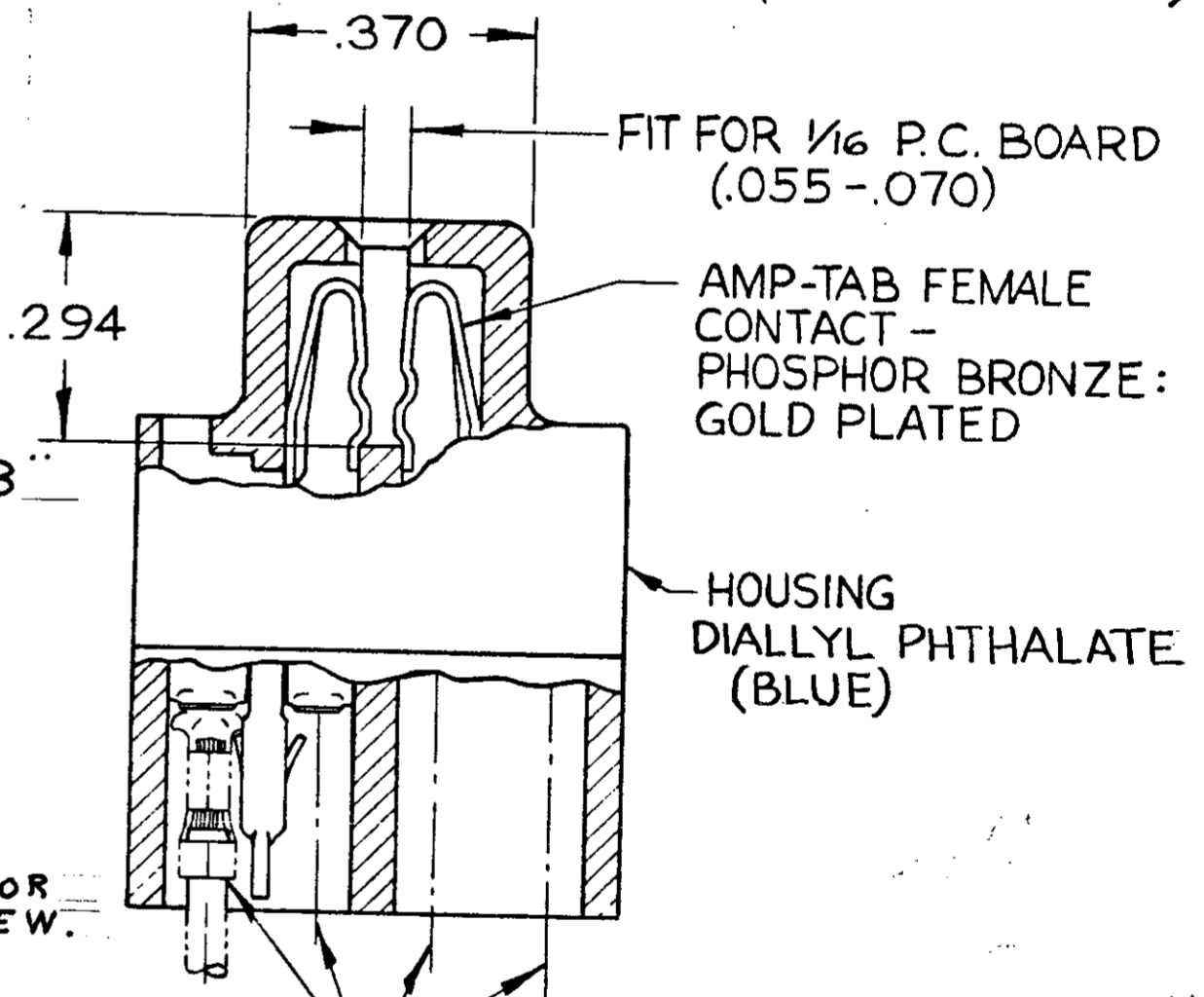
4. SAME AS -1 EXCEPT: OBSOLETE FLOATING BUSHINGS. (SEE DETAIL "B")  
 5. SAME AS -1 EXCEPT: FLOATING BUSHINGS. (SEE DETAIL "C")



ALTERNATE MOUNTING EAR CONFIGURATION



STAINLESS STEEL  
 FIT FOR #4-40 SCREW -4 ONLY



AMP-TAB FEMALE CONTACT - PHOSPHOR BRONZE: GOLD PLATED

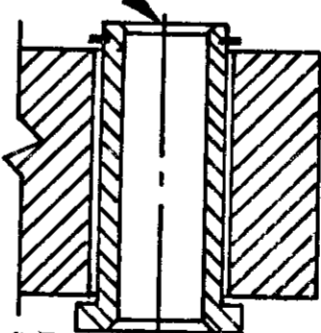
HOUSING DIALLYL PHTHALATE (BLUE)

CONTACT #66143 OR #66144 (NOTE: MAX. WIRE SIZE #20) (MUST BE ORDERED SEPARATELY)

CLEARANCE FOR #4-40 SCREW.

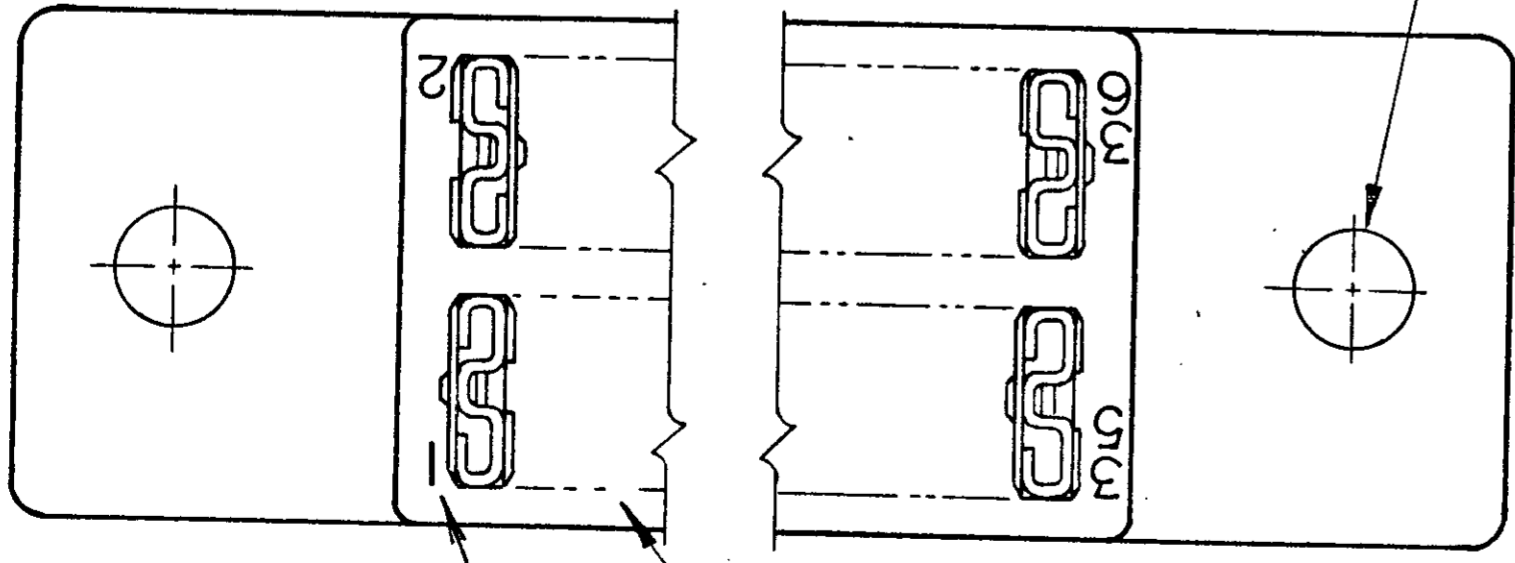
±.003 "J" DIA. HOLES

DETAIL "C" -5 ONLY



SECTION A-A

▲ GROOVES FOR "ON CONTACT KEYING" AMP'S OPTION DEPENDING ON METHOD OF MANUFACTURE. FOR "ON CONTACT" KEYING USE KEYING PLUG P/N 583487-1. (MUST BE ORDERED SEPARATELY.)  
 ▲ MOUNTING EAR CONFIGURATION AMP'S OPTION DEPENDS ON METHOD OF MANUFACTURE.



CIRCUIT CAVITY IDENTIFICATION MARKING PER MIL-C-21097 MARK FIRST 5 POSITIONS NEXT 5 POSITIONS PLAIN

3. LASER MARKING ACCEPTABLE FOR ALL MARKING

UNLESS OTHERWISE SPECIFIED DIMENSIONS ARE IN INCHES TOLERANCES ON		CONTRACT NO.		AMP INCORPORATED HARRISBURG, PENNSYLVANIA	
FRACTIONS	DECIMALS	DR	DATE	AMP TRADEMARK	
± .005	± .005	<i>J. Asick</i>	12-16-66	18 POSITION AMP-TAB CONNECTOR .100 CENTERS QUAD.	
ANGLES		CHK	DATE	SIZE	CODE IDENT NO
± .005		<i>W. Burns</i>	1-5-67	C	00779
MATERIAL		DSGN ENGR	DATE	NUMBER	582587
SEE CALLOUT		APPD	DATE	REV	T
HEAT TREAT		<i>S. Kaufman</i>	1-10-67	SCALE	4-1
SEE CALLOUT		DSGN APPD	DATE	WT	CALC
FINISH		OTHER APPD	DATE	ACTUAL	SHEET
SEE CALLOUT					

AMP INFO  
 LOC PRINT/DIST  
 DF FO

NUMBER CUS. 582587