



Broadsens

BHU series ultrasonic sensors are built for structural health monitoring. They are based on piezoelectric and can be paired with ultrasonic scanner and receiver for structural integrity inspection. They are compact and protected with metal shells for long lasting life. They can be mounted on structure permanently with epoxy. BHU series ultrasonic sensors can be used with BroadScan ultrasonic scanner for structural health monitoring of metal or composite structures.



Compact ultrasonic sensor BHU100



BHU100



BHU200



BHU500



BHU580

Parameters	BHU100	BHU200	BHU500	BHU580
Number of crystals	1	2	5	Up to 5
Resonance frequency	300KHz±10KHz	300KHz±10KHz	300KHz±10KHz transmit 400kHz±10KHz receive	300KHz±10KHz
Electromechanical coupling coefficient (Kp)	≥55%			
Resonant impedance (Zm)	≤20Ω			
Testing condition	23±3°C, 40~70%R.H.			
Connector	SMA male/ open wire	M8/open wires	M8/open wires	M8/open wires
Cable length (cm)	25	100	100	100
Water proof	IP67			
Working temperature	-55°C~105°C			
Size	9.5mm diameter, 3.5mm height	22 mm width, 10mm depth, 4mm height	19mm diameter, 4mm height	23mm width, 12mm depth, 4mm height
Weight (with cable & connector)	10g	75g	60g	65g

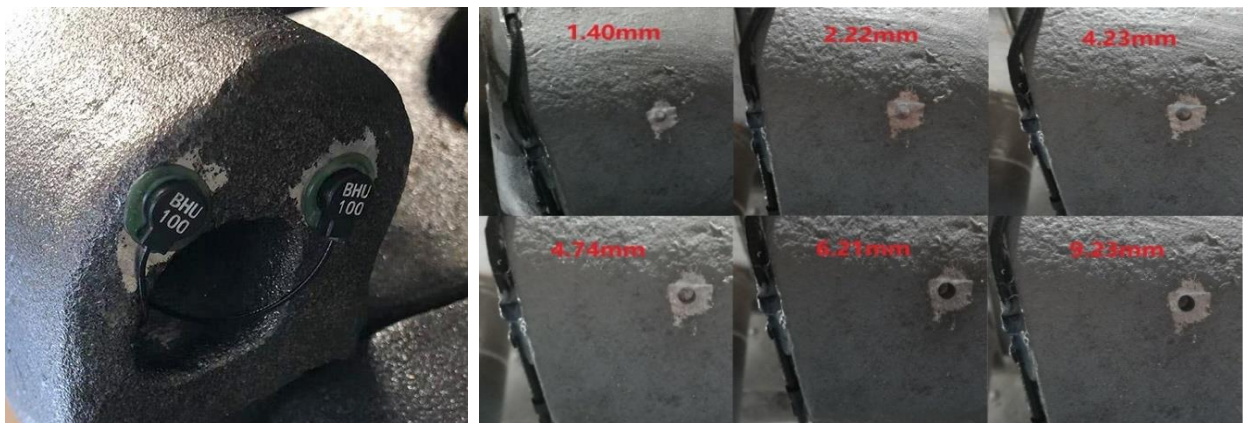
PRESENTATION

PRODUCT

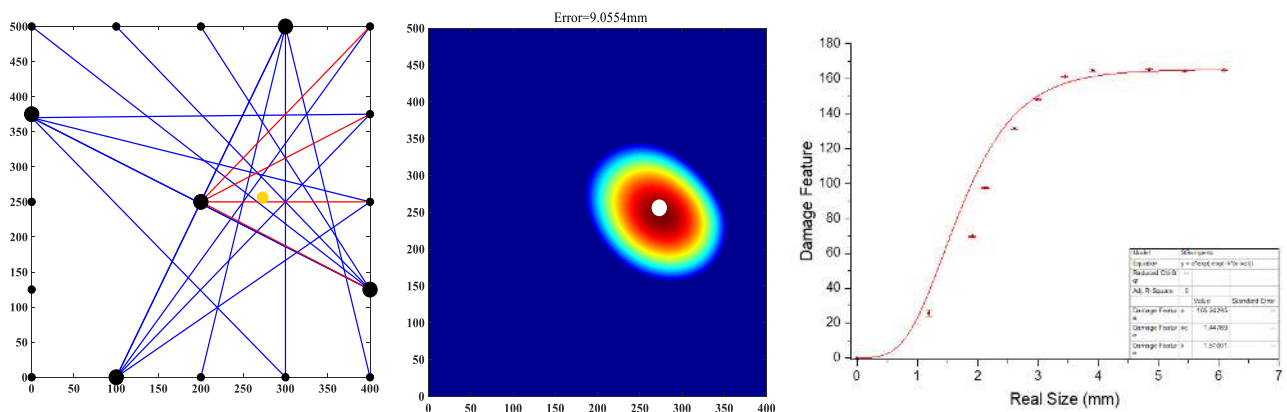
Advantages of BHU series sensors

- Compact design
- Robust
- Flexible length
- Light weight
- Easy installation
- Excellent consistency
- Water proof
- Excellent response

Applications: Structural Health Monitoring with online ultrasonic sensors BHU100



Damage identification, location and sizing



Ultrasonic scanner D110C



Ultrasonic scanner D200

“BroadSens, sense the broader world”

Website: www.broadsens.com

Sales: sales@broadsens.com

Support: support@broadsens.com

USA Headquarter

. 1601 McCarthy Blvd, Milpitas, CA, 95035

Asia Offices

. 1707-A066, No.9 North Fourth Ring West Rd, Beijing

. Rm 803, No.152, Huixin Rd, Nanhu District, Jiaxing