



4500 MHz Cavity Bandpass Filter

ANATECH ELECTRONICS INC
RF & Microwave Filters & Products

Part Number: AE4500B10732



Electrical specifications

- Center frequency:** 4500 MHz
- Passband frequencies:** 4000 MHz to 5000 MHz (BW=1000 MHz)
- Insertion loss of passband:** 1 dB max
- Low side rejection frequencies:** 60 dB@3800 MHz
- High side rejection frequencies:** 60 dB@5200 MHz
- Return loss:** VSWR(1.5:1) max
- Nominal impedance:** 50 Ohm
- Power handling:** 5 Watts

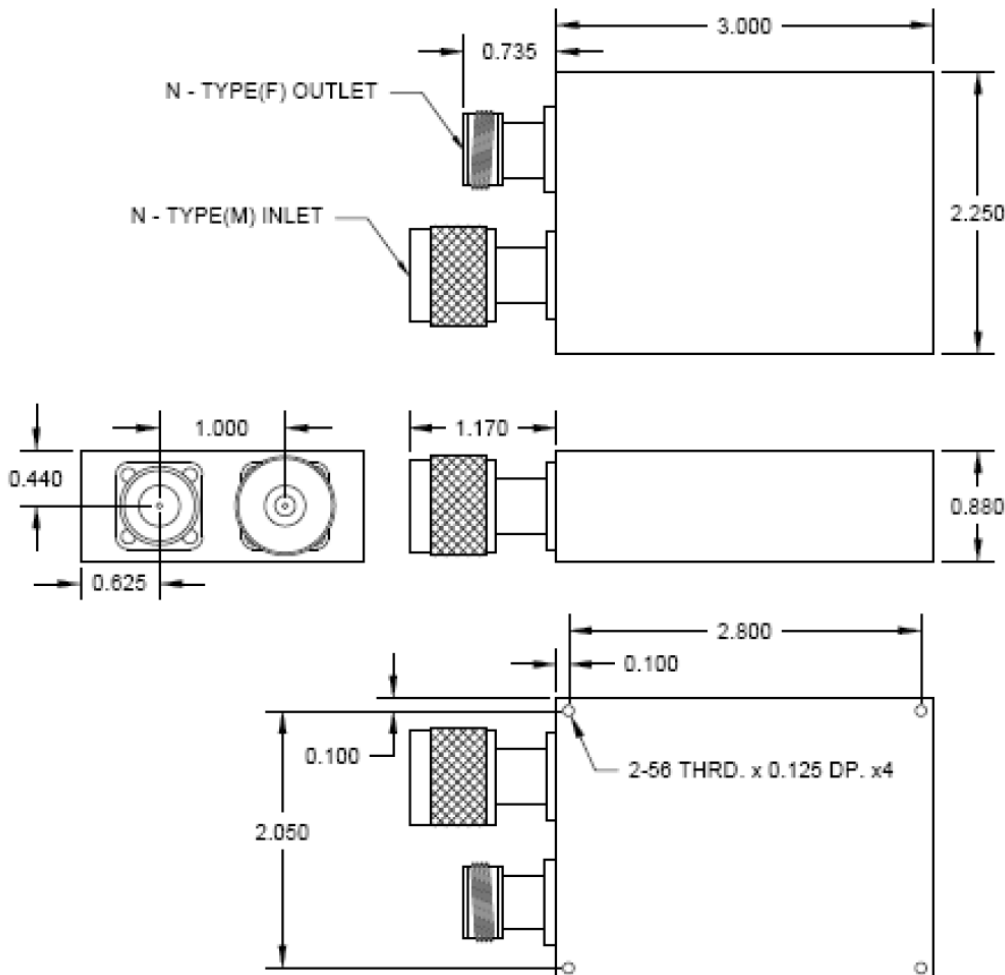
Mechanical

- Mounting Method:** Threaded Mounting Holes
- Connector Type:** N female / N male
- Dimensions:** 3.00" X 2.25" X 0.88" in

Environmental

- Operating Temperature:** -45 to +85° C
- Storage Temperature:** -55 to +95° C
- Shock:** 20 G. 11ms
- Vibration:** 20 G. 5 to 200 MHz

Outline Drawing:





ANATECH ELECTRONICS INC
RF & Microwave Filters & Products

4500 MHz Cavity Bandpass Filter

Part Number: AE4500B10732



Plot:

