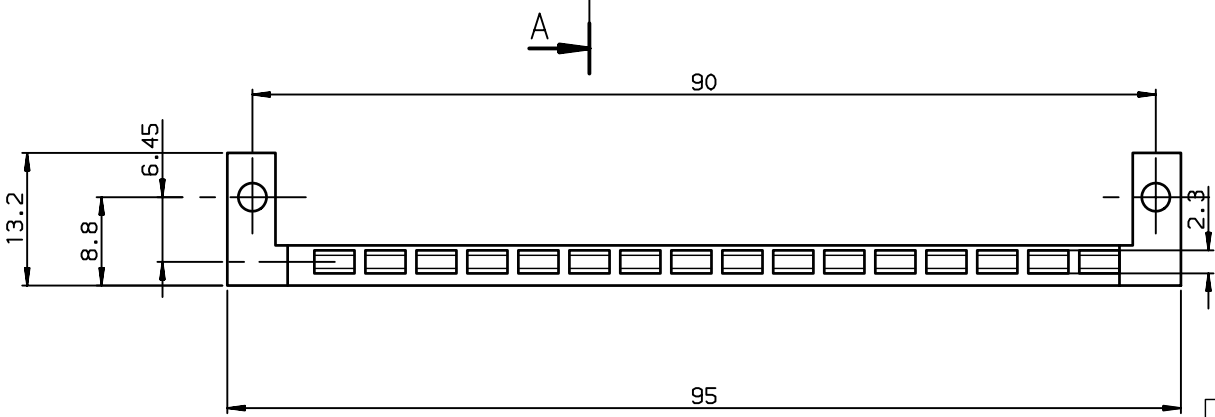
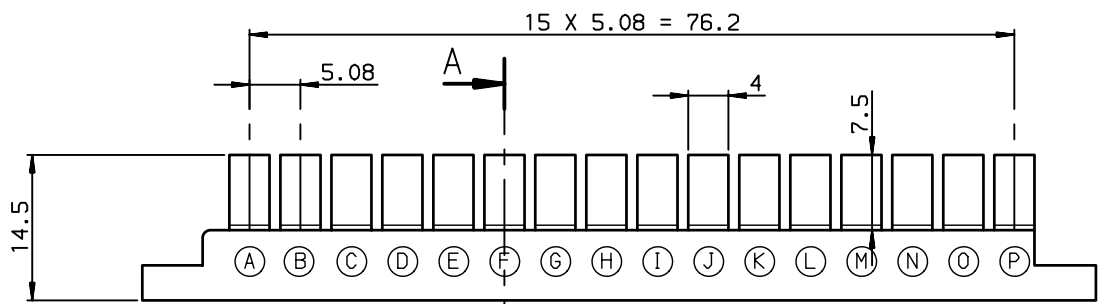


COUPE AA



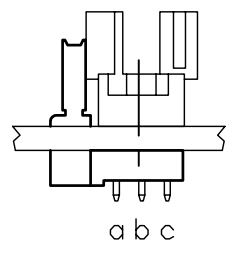
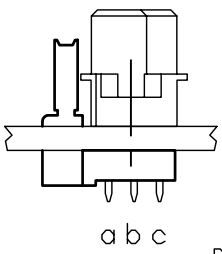
PACKAGING	REF:	QTY
PLASTIC BAG	SACHET 350X200	100 PIECES
SHIPPING BOX	C2	1 SACHET

**NOTE: RoHS INFORMATIONS**

- The "LF" product meets European union Directives and other country regulations as described in GS-22-008.
- The product is not intended to be exposed to a manufacturing solder process.
- Packaging spec: see GS-14-920.

STANDARD FEMALE ( TYPE C )

REVERSE MALE ( TYPE R )



Recommended accessory :  
screws and nuts : M 2.5 x 12

Part number **8609-153-004LF**

www.fciconnect.com		surface ISO 1302 ✓	tolerance std ISO 406 ISO 1101	projection mm
TOLERANCES UNLESS OTHERWISE SPECIFIED				
Dr	ROUILLARD	2005/10/12	0.X	±0.1
Eng	TARON	2005/10/12	0.XX	±0.1
Chr	LEGARE	2005/10/12	0.XXX	±0.1
Appr	LEGARE	2005/10/12	ANGULAR 0.XX' ±2'	LINEAR
Product family			DIN	Spec ref -

rev	ecn no	dr	date
A	LS05-0086	HLE	2005/10/12
B	LS06-0095	LGO	2006/06/29
C	LS07-0071	HLE	2007/03/06
-	-	-	-
-	-	-	-
-	-	-	-

FCJ title SEPARATE POLARIZING BAR for receptacle connectors	dwg no	C-8609-1193	Rev.	C
	catalog no	SEE TABLE	CUSTOMER	sheet 1 of 1