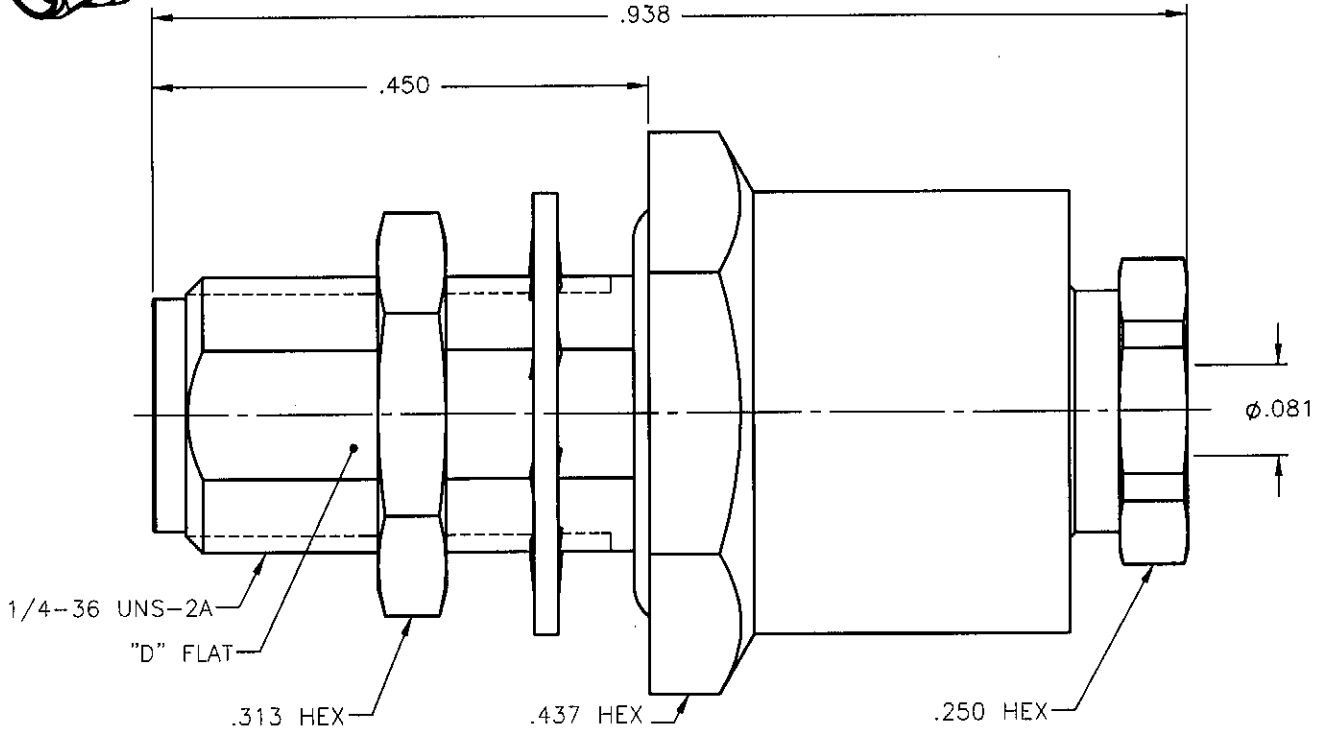


REVISIONS			
REV.	DESCRIPTION	DATE	APPROVED
C	ECO #7426	01/20/09	M.J.



NOTES:

DESIGNED TO BE WATERTIGHT TO A DEPTH OF 20M FOR 2 HOURS PRESSURIZED AT THE INTERFACE END.

MATERIALS:


1. BODY & NUT = STAINLESS STEEL PER ASTM A582, ALLOY 303, CONDITION "A".
2. INSULATORS = VIRGIN WHITE TEFLON PER ASTM D1710, GRADE 1, TYPE I, CLASS "B".
3. CONTACT = BERYLLIUM COPPER PER ASTM B196, ALLOY C17300, TEMPER TD04.
4. LOCKWASHER = PHOSPHOR BRONZE PER ASTM B139, COPPER ALLOY C53400, TEMPER H04.
5. O-RINGS = SILICONE RUBBER PER ZZ-R-765, CLASS 2B, GRADE 65-75.
6. ALL OTHER METAL PARTS = BRASS PER ASTM B16, ALLOY C36000, TEMPER H02.

FINISHES:

1. CONTACT = GOLD PLATE PER MIL-G-45204, TYPE II, CLASS 1, GRADE C, OVER .00010 TO .00020 STRESS FREE SULFAMATE NICKEL PER QQ-N-290.
2. ALL OTHER METAL PARTS = NICKEL PLATE PER QQ-N-290, CLASS 1, GRADE G, EXCEPT .0001 TO .0002 THICK OVER .00005 TO .0001 THICK COPPER PER MIL-C-14550.

Property of Radiall Incorporated
 This document cannot be reproduced or
 communicated to a third party without prior
 written permission of RADIALL Incorporated.

UNLESS OTHERWISE SPECIFIED DIMENSIONS ARE IN INCHES TOLERANCES ON	DWN:	DATE
	M.J.	01/20/09
	CHKD:	DATE
	D.N.	01/20/09
DECIMAL	ANGLE	APVD:
		J.M.
		DATE
		01/20/09


APPLIED ENGINEERING PRODUCTS
 104 John W. Murphy Dr.
 New Haven, CT 06513
 a RADIALL company

**SMA STRAIGHT JACK
 BULKHEAD/REAR MOUNT CLAMP
 WATERTIGHT FOR RG-178 & SIMILAR CABLES**

REFERENCE:	MATERIAL:
ORIGINATED: A.M. DATE: 05/10/00	SEE NOTES

SIZE	FSCM NO.	DWG NO.	REV
A	19505	9153-7553-002	C
SCALE 6:1		THIRD ANGLE PROJECTION	SHEET 1 OF 1

9153-7553-002