





# Shielded Drum Core Inductor

PA4302.XXXNLT Series



-  **Height:** 5.6mm Max
-  **Footprint:** 7.5 x 7.5 mm Max
-  **Current Range:** 0.5A to 7.5A
-  **Inductance Range:** 1uH to 330uH

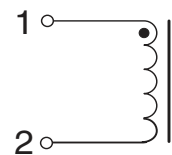
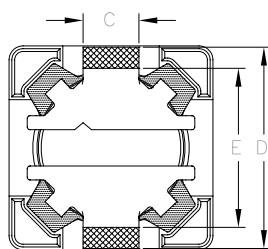
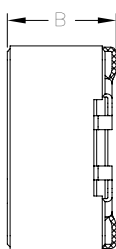
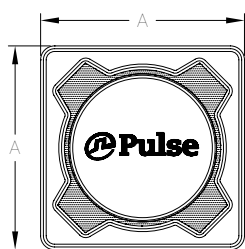
Electrical Specifications @ 25°C — Operating Temperature -40°C to 125°C

Pulse Part Number	Inductance (uH)	Rated Current (A) Max	DC Resistance (mΩ) Max
PA4302.102NLT	1.0	7.5	20
PA4302.332NLT	3.3	5.6	22.8
PA4302.472NLT	4.7	4.8	26.8
PA4302.682NLT	6.8	4	36.8
PA4302.103NLT	10	3	55
PA4302.473NLT	47	1.45	185
PA4302.683NLT	68	1.2	265
PA4302.104NLT	100	1	380.5
PA4302.224NLT	220	0.72	765
PA4302.334NLT	330	0.5	1344

## Mechanical

## Schematic

### PA4302.XXXNLT



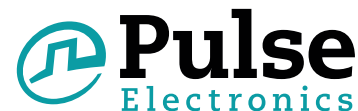
FINAL OUTLINE

SUGGESTED PAD LAYOUT

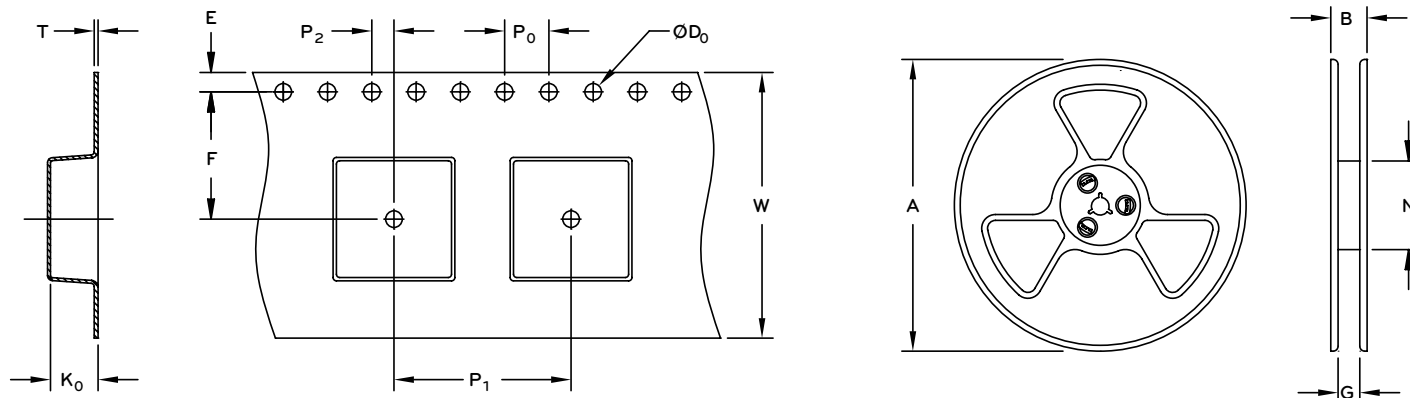
Part Number	A (max)	B (max)	C	D	E	F	G	H
PA4302.XXXNLT	7.5 MAX	5.6 MAX	(2.0)	(7.2)	(5.0)	(2.3)	(1.6)	(4.8)

# Shielded Drum Core Inductor

PA4302.XXXNLT Series



## TAPE & REEL INFO



### SURFACE MOUNTING TYPE, REEL/TAPE LIST

TYPE	REEL SIZE (mm)				TAPE SIZE (mm)									QTY
	A	B	G	N	E	F	Do	P	P0	P2	W	T	K0	PCS/REEL
PA4302.XXXNLT	0330	21	16.5	100	1.75	7.5	1.5	12	4	2	16	0.40	5.6	900

#### NOTES:

- Inductance tolerance is +/-30% for inductance values between 1uH and 6.8uH and +/-20% for values between 10uH and 330uH.
- Inductance is measured at 100kHz, 250mV
- The rated current as listed is the rms or heating current that the part can withstand with acceptable temperature rise in typical applications. At the listed current the inductance typically drops to 85-90% of the no load value when measured at 25C.
- The temperature of the component (ambient plus temperature rise) must be within the stated operating temperature.

## For More Information

### Pulse Worldwide Headquarters

12220 World Trade Drive  
San Diego, CA 92128  
U.S.A.

Tel: 858 674 8100  
Fax: 858 674 8262

### Pulse Europe

Zeppelinstrasse 15  
71083 Herrenberg  
Germany

Tel: 49 7032 7806 0  
Fax: 49 7032 7806 12

### Pulse China Headquarters

B402, Shenzhen Academy of  
Aerospace Technology Bldg.  
10th Kejinan Road  
High-Tech Zone  
Nanshan District  
Shenzhen, PR China 518057

Tel: 86 755 33966678  
Fax: 86 755 33966700

### Pulse North China

Room 2704/2705  
Super Ocean Finance Ctr.  
2067 Yan An Road West  
Shanghai 200336  
China

Tel: 86 21 62787060  
Fax: 86 2162786973

### Pulse South Asia

135 Joo Seng Road  
#03-02  
PM Industrial Bldg.  
Singapore 368363

Tel: 65 6287 8998  
Fax: 65 6287 8998

### Pulse North Asia

3F, No. 198  
Zhongyuan Road  
Zhongli City  
Taoyuan County 320  
Taiwan R. O. C.

Tel: 886 3 4356768  
Fax: 886 3 4356823 (Pulse)  
Fax: 886 3 4356820 (FRE)

Performance warranty of products offered on this data sheet is limited to the parameters specified. Data is subject to change without notice. Other brand and product names mentioned herein may be trademarks or registered trademarks of their respective owners. © Copyright, 2014. Pulse Electronics, Inc. All rights reserved.