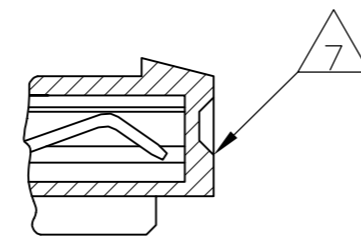
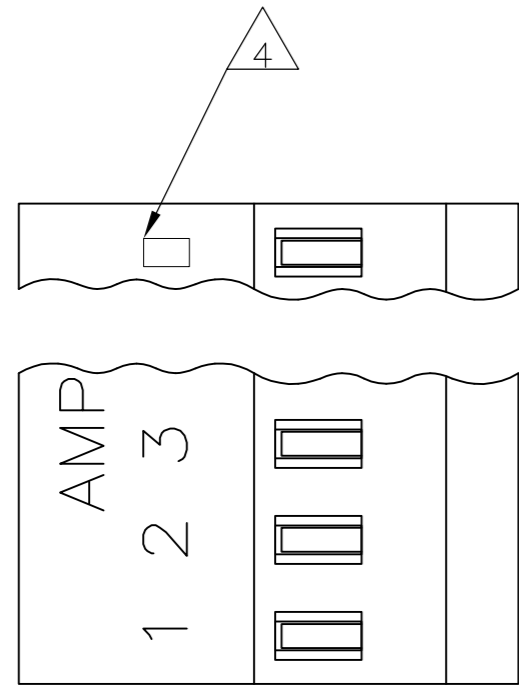
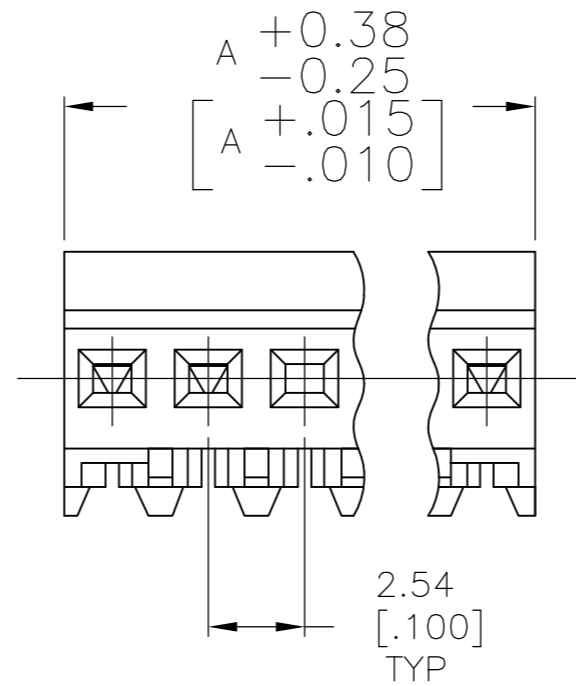
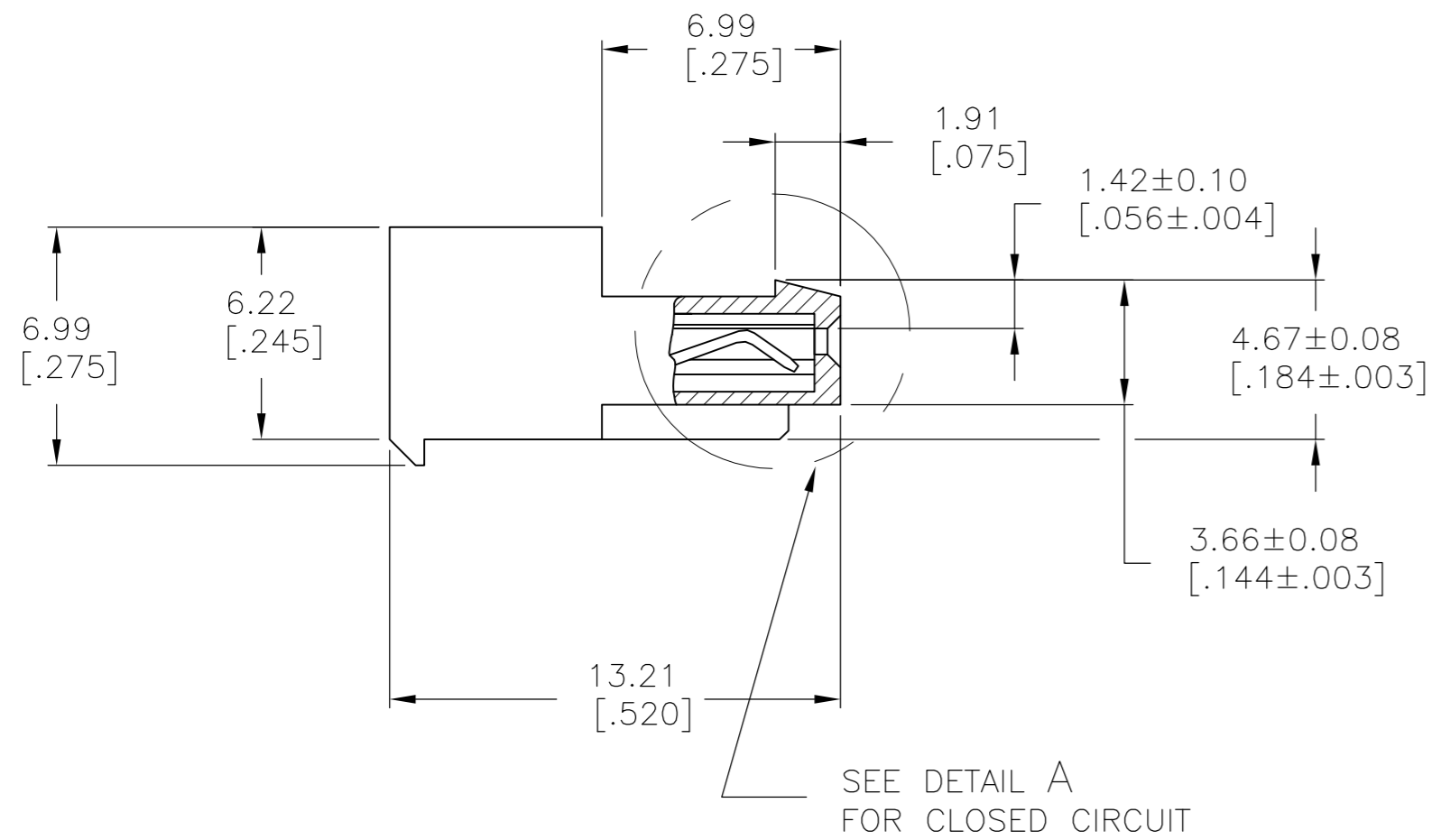


THIS DRAWING IS UNPUBLISHED. RELEASED FOR PUBLICATION
 © COPYRIGHT BY TYCO ELECTRONICS CORPORATION. ALL RIGHTS RESERVED.

| LOC | DIST | REVISIONS | | | | | |
|-----|------|-----------|-----|---------------------------|-----------|-----|------|
| CM | 00 | P | LTR | DESCRIPTION | DATE | DWN | APVD |
| | | F | | REVISED PER ECR-17-018812 | 12FEB2018 | BDA | SG |



DETAIL A



| FINISH | DIM A | NO OF CIRCUITS | PART NO |
|----------|--------------|----------------|------------|
| TIN | 17.78 [.700] | 7 | 3-644551-7 |
| TIN-LEAD | 17.78 [.700] | 7 | -644551-7- |

8 SUPERSEDED

- 1 MATERIAL: CONNECTOR - NYLON UL94V-2 (RED).
CONTACTS - 0.30[.012] THICK COPPER ALLOY
MATTE WHISKER MITIGATED TIN
0.00203[.000080] MIN THICKNESS
OVER NICKEL UNDERPLATE OR BRIGHT
TIN-LEAD 93/7 0.00203[.000080] MIN
THICKNESS. SEE FINISH COLUMN FOR
PLATING TYPE.
- 2. CONTACTS ACCEPT 22 AWG WIRE WITH 1.52[.060] MAX
INSULATION DIAMETER.
- 3. CONTACTS MUST ACCEPT 0.64±0.03[.025±.001] SQUARE
POST AND REMAIN LOCKED IN POSITION.
- 4 IDENTIFICATION NUMBER FOR LAST CIRCUIT MAY
NOT APPEAR ON ALL ASSEMBLIES.
- 5. DIMENSIONS IN BRACKETS ARE IN INCHES.
- 6. HOUSING FEATURES ARE: CLOSED END WITH LOCKING RAMP.
- 7 DETAIL A SHOWS CIRCUIT NO. 3 MOLDED CLOSED.
- 8 OBSOLETE PARTS

| | | | | |
|---|--|------------------------------|--|------------------------------|
| THIS DRAWING IS A CONTROLLED DOCUMENT. | | DWN B. LEWIS 22APR91 | Tyco Electronics Corporation Harrisburg, Pa 17105-3608 | |
| DIMENSIONS: mm [INCHES] | | CHK R. SWING 22APR91 | | |
| TOLERANCES UNLESS OTHERWISE SPECIFIED: | | APVD G. MILLER 22APR91 | | |
| | | PRODUCT SPEC 108-1050 | NAME MTA 100 CONNECTOR ASSEMBLY, 22 AWG, NO.3 CIRCUIT CLOSED, SPECIAL | |
| MATERIAL | | APPLICATION SPEC 114-1019 | SIZE A2 | CAGE CODE 00779 |
| FINISH | | WEIGHT | DRAWING NO C=644551 | RESTRICTED TO - |
| 1 | | CUSTOMER DRAWING | | SCALE 5:1 SHEET 1 OF 1 REV F |