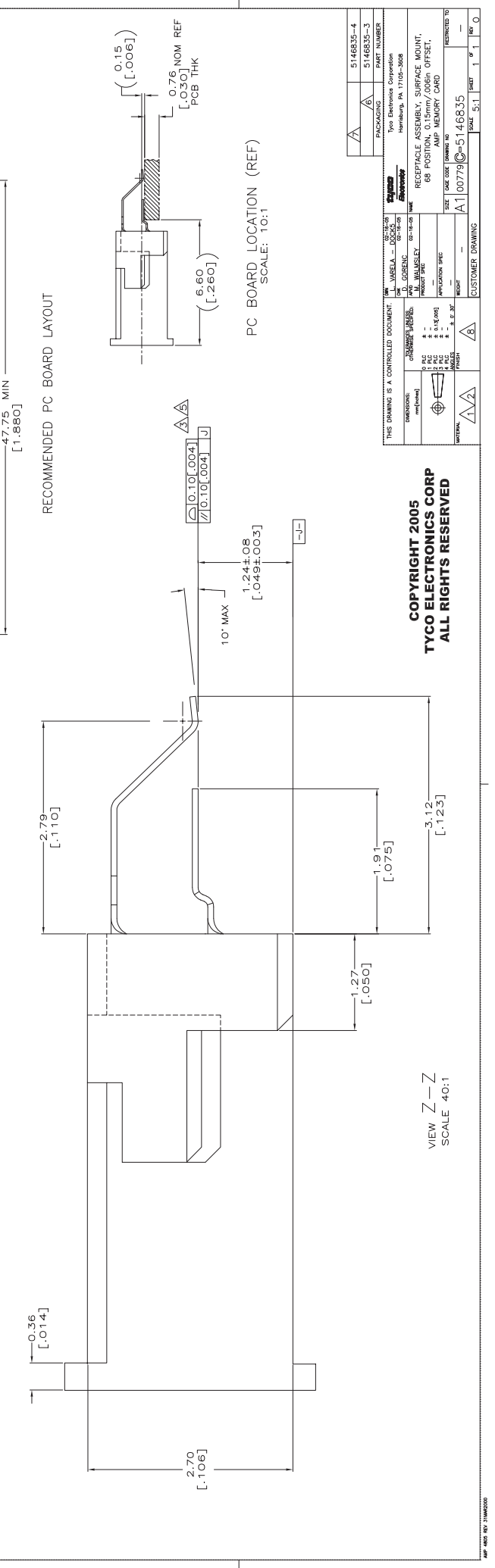
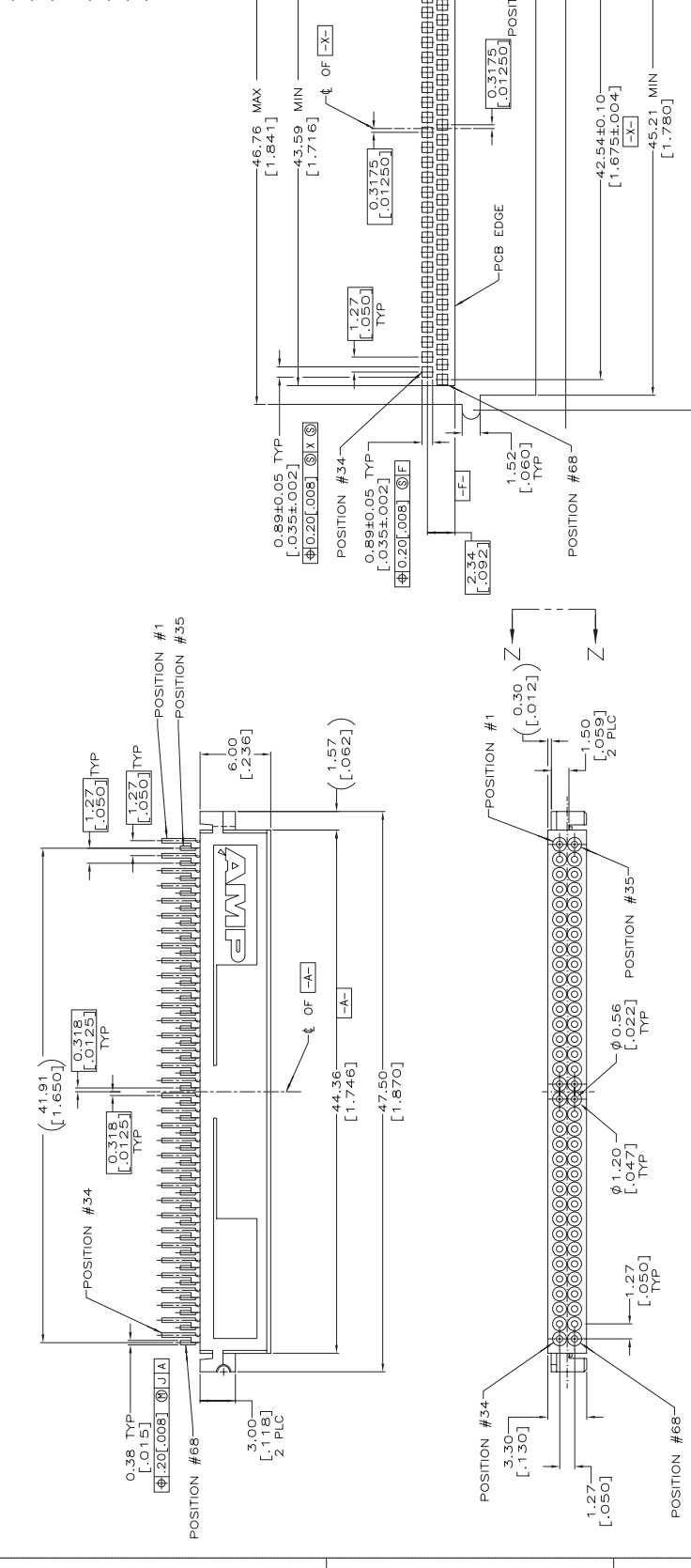


HOUSING: LCP, GLASS FILLED, COLOR: BLACK.
 CONTACTS: BERYLLIUM COPPER.
 DIMENSION IN REFERENCE TO LOWEST POINT OF EACH LEAD.
 4. POINT OF CONTACT 2.3[.091] REF FROM MATING FACE.
 APPLIES TO ALL SOLDER TAILS.
 PACKAGED IN 56mm WIDE TAPE AND PLASTIC REEL.
 PACKAGED IN 72mm WIDE TAPE AND PLASTIC REEL.
 CONTACTS: 0.00076[.000030] MINIMUM GOLD ON MATING AREA, 0.00064[.000025] MINIMUM SEMI-BRIGHT NICKEL TIN ON SOLDER TAIL, ALL OVER 0.00127 [0.00050] MINIMUM WHITE NICKEL.



COPYRIGHT 2005
TYCO ELECTRONICS CORP
ALL RIGHTS RESERVED

THIS DRAWING IS A CONTROLLED DOCUMENT. CONTROLLED BY: M. WALSLEY DATE: 02-14-05 DRAWING NO: 5146835-3	DESIGNED BY: M. WALSLEY DATE: 02-14-05 CHECKED BY: M. WALSLEY DATE: 02-14-05 APPROVED BY: M. WALSLEY DATE: 02-14-05	TITLE: MEMORY CARD PART NUMBER: 5146835-3 REV: 1 DATE: 02-14-05	CUSTOMER DRAWING: 100779-5146835 PART NUMBER: 5146835-4 REV: 1
--	--	--	--