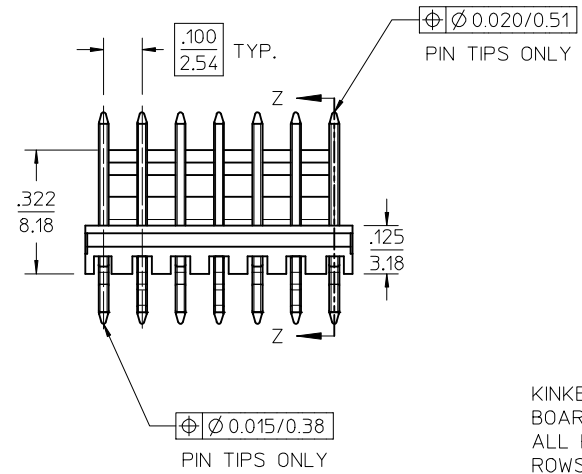
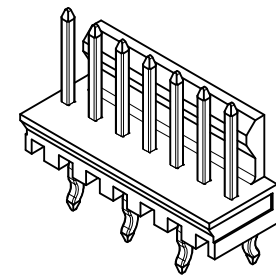
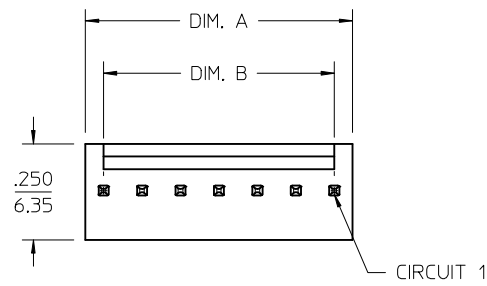


NOTES

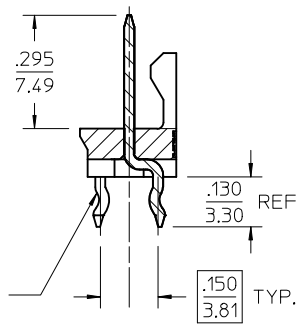
1. MATERIAL: WAFER - GLASS FILLED POLYESTER, UL94 V-0, COLOR: NATURAL (WHITE)
PIN - BRASS
2. FINISH: OVERALL REFLOWED MATTE TIN: .000060/0.00152 MIN. OVER .000050/0.00127 MIN. NICKEL
3. PRODUCT SPECIFICATION: PS-10-07
4. BULK PACK PER PK-43009-001
5. THIS PART CONFORMS TO CLASS B REQUIREMENTS OF COSMETIC SPECIFICATION PS-45499-002.
6. ENGRAVING LOCATION IS DETERMINED BY TOOLING AND WILL BE PRESENT AT EITHER LOCATION SHOWN.

ENG. NO. DESIGNATION:

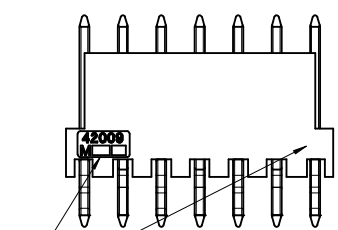
A-42009- N - **
 CKT. SIZE [] [] VOID PIN DESIGNATION
 A= #1 PIN
 B= #2 PIN
 C= #3 PIN
 ECT.



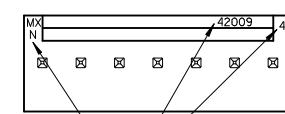
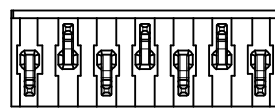
KINKED PINS FOR P.C. BOARD RETENTION- ALL PINS KINKED, TWO ROWS OPPOSING EACH OTHER



SECTION Z-Z

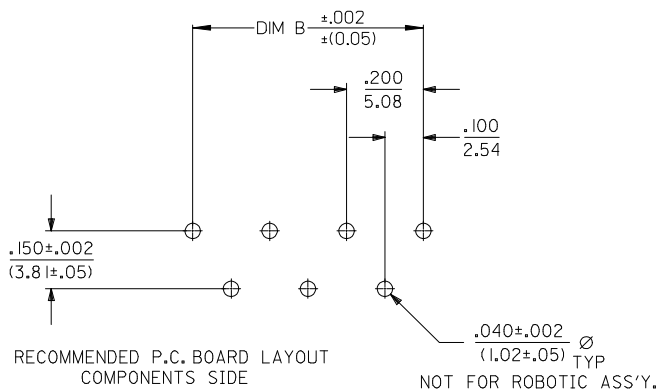


ENGRAVING MAY BE PRESENT ON EITHER END OF THE PART



ALTERNATE ENGRAVING LOCATION SEE NOTE 6

10	.995/(25.27)	.900/(22.86)
9	.895/(22.73)	.800/(20.32)
8	.795/(20.19)	.700/(17.78)
7	.695/(17.65)	.600/(15.24)
6	.595/(15.11)	.500/(12.70)
5	.495/(12.57)	.400/(10.16)
4	.395/(10.03)	.300/(7.62)
3	.295/(7.49)	.200/(5.08)
2	.195/(4.95)	.100/(2.54)
CKT SIZE	DIM A	DIM B



REDRAWN, ENGRAVING EC NO: UCP2013-3460 DRWN:KIPPER 2013/04/11 CHKD:ANDERSON 2013/04/11 APPR:FSMITH 2014/01/13	QUALITY SYMBOLS ∇=0 ∇=0 ∇=0	GENERAL TOLERANCES (UNLESS SPECIFIED)		DIMENSION STYLE IN/MM		SCALE 4:1	DESIGN UNITS INCH	THIRD ANGLE PROJECTION	
		4 PLACES ± --- ± ---	mm	INCH	DRAWN BY EDGLE Y	DATE 1986/11/29	WAFER, FRICTION LOCK ASSEMBLY molex DOCUMENT NO. SDA-42009-* SHEET NO. 1 OF 2		
		3 PLACES ± --- ± .010			CHECKED BY EDGLE Y	DATE 1986/11/29			
		2 PLACES ± 0.25 ± .014			APPROVED BY FSMITH	DATE 2014/01/13			
1 PLACE ± 0.36 ± ---									
		ANGULAR ±1/2°		MATERIAL NO. SEE CHART					
		DRAFT WHERE APPLICABLE MUST REMAIN WITHIN DIMENSIONS		SIZE C					

