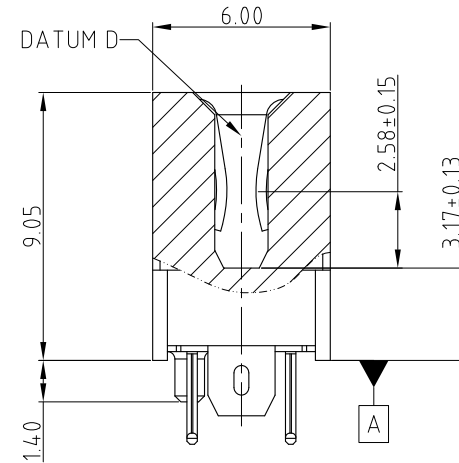
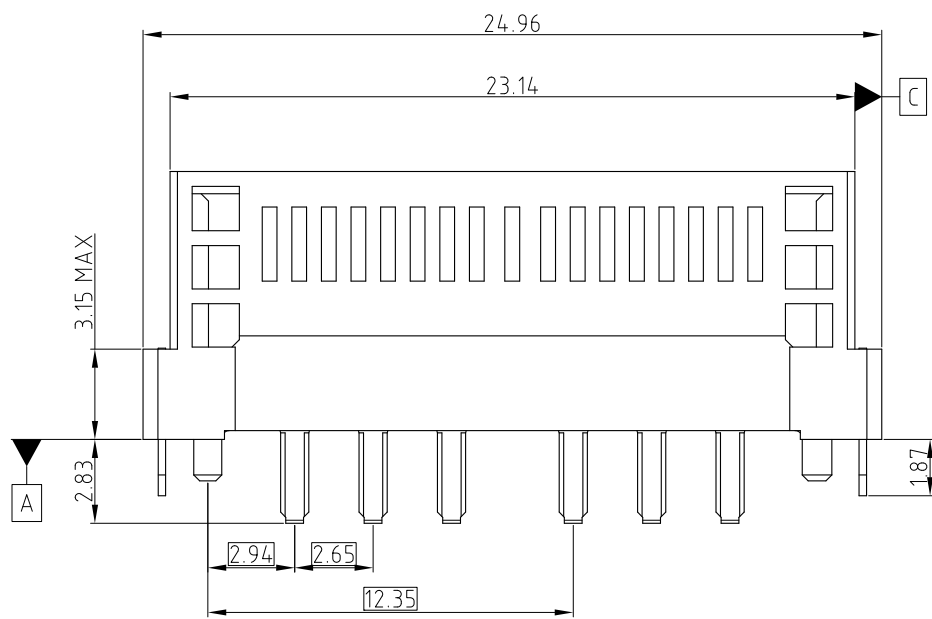
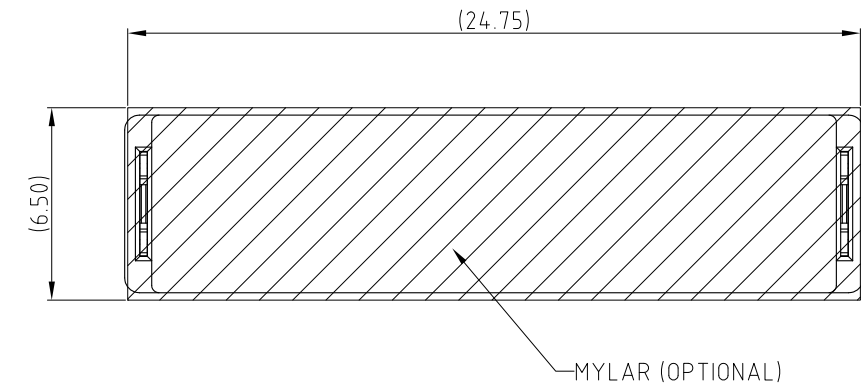
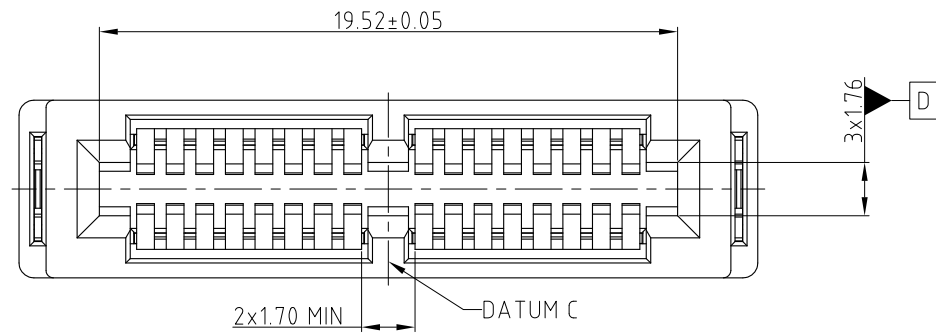


This document is the property of Amphenol Corporation and is delivered on the express condition that it is not to be disclosed, reproduced or used, in whole or in part, for manufacture or sale by anyone other than Amphenol Corporation without its prior consent, & that no right is granted to disclose or to use any information in this document.

CUSTOMER DRAWING

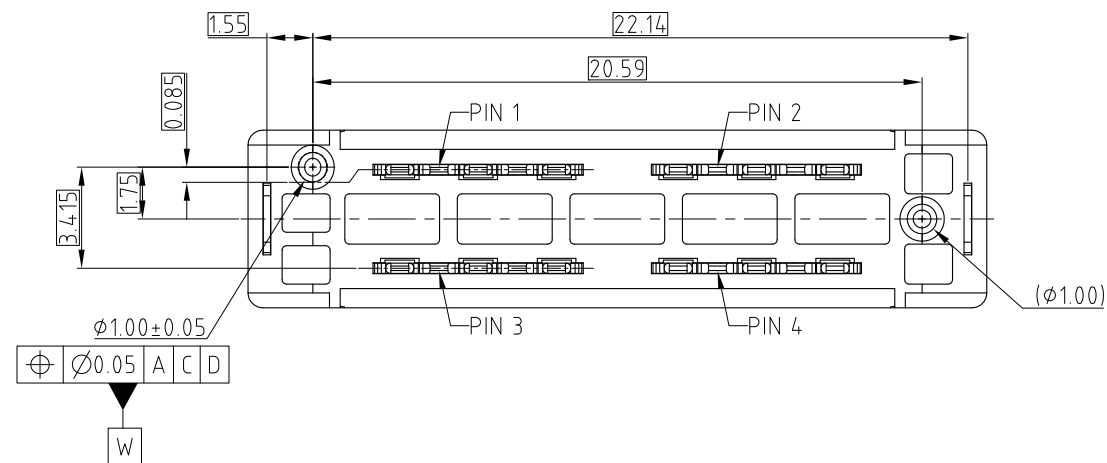
REVISIONS

SYM	ECN	DESCRIPTION	DATE	APPROVED
1	CDXXXX	PROPOSAL	Nov.26,2019	YH
1	CD1997	OFFICIAL RELEASE	Nov.26,2019	YH
2	CD2228	UPDATE TITLE	Apr.24,2020	YH



NOTE:

- MATERIAL:
HOUSING: HIGH TEMPERATURE THERMOPLASTIC, BLACK, UL94-V0
CONTACT: COPPER ALLOY
BOARDLOCK: COPPER ALLOY
- FINISHED:
CONTACT: MATING AREA: 0.76 um MIN Au THICKNESS PLATED
OVER 1.27-2.54 um NICKEL UNDERPLATED
SOLDER AREA: 1.27 um MIN TIN OVER 1.27-2.54 um NICKEL UNDERPLATED
BOARDLOCK: 1.27 um MIN TIN OVER 1.27-2.54 um NICKEL UNDERPLATED
- ELECTRICAL PERFORMANCE:
RATED CURRENT: 27.5A EACH POWER PIN
INSULATION RESISTANCE: 1000MΩ MIN
- DURABILITY: 200 CYCLES.
- MATERIAL IS FULFILLED RoHS & HALOGEN FREE.
- ORDER P/N: ME10000401P0011

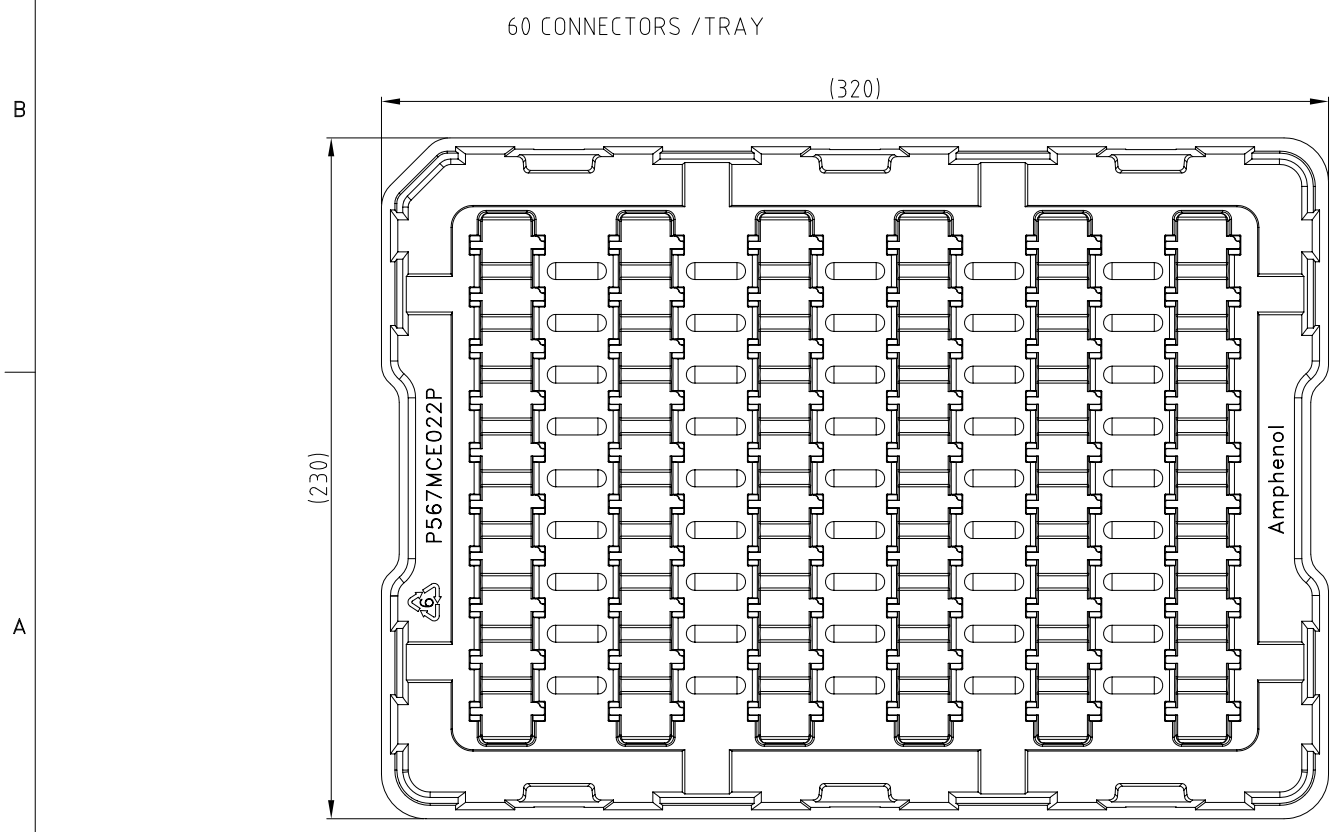
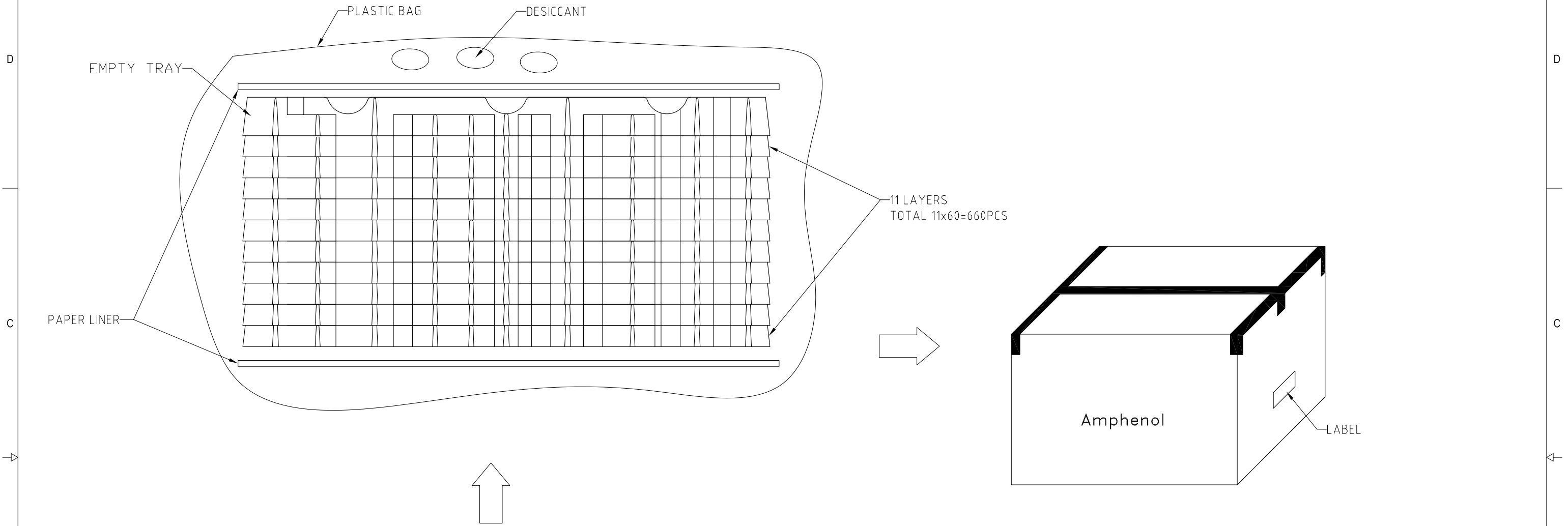


UNLESS OTHERWISE SPECIFIED TOLERANCES		APPROVAL	DATE	Amphenol		
	U.S. METRIC	DRAWN	Yunx.liu			Apr.24,2020
.X	+/- 0.50	CHECKED	LY.YI			Apr.24,2020
.XX	+/- 0.25	APPROVED				
.XXX	+/- 0.15					
FRACTIONS	+/- 5°	DRAWING FILE :		TITLE		
ANGLES		INTERNAL\ME\CME10000401P0011		MINI COOL EDGE 4PIN V/T HIGH POWER CONNECTOR		
FOR MATERIALS AND FINISHES SEE NOTES		ANGLE OF PROJECTION		SIZE	DRAWING NO.	
REMOVE SHARP EDGES				A3	C ME10000401P0011	
DIMENSIONS				SCALE	NONE	REV.
—U.S.—	INCHES			SHEET 1 OF 3		
(METRIC)	(mm)					

This document is the property of Amphenol Corporation and is delivered on the express condition that it is not to be disclosed, reproduced or used, in whole or in part, for manufacture or sale by anyone other than Amphenol Corporation without its prior consent, & that no right is granted to disclose or to use any information in this document.

CUSTOMER DRAWING

REVISIONS				
SYM	ECN	DESCRIPTION	DATE	APPROVED
		SEE SHEET 1		



60 CONNECTORS / TRAY

660PCS / CARTON



UNLESS OTHERWISE SPECIFIED TOLERANCES		APPROVAL	DATE
.X	+/-	DRAWN	Yunx.liu
.XX	+/-	CHECKED	Ly.yi
.XXX	+/-	APPROVED	
FRACTIONS	+/-	DRAWING FILE : INTERNAL\ME\CME10000401P0011	
ANGLES	+/-	ANGLE OF PROJECTION	
FOR MATERIALS AND FINISHES SEE NOTES			
REMOVE SHARP EDGES			
DIMENSIONS			
U.S.	INCHES		
(METRIC)	(MM)		

Amphenol		
TITLE		
MINI COOL EDGE 4PIN V/T HIGH POWER CONNECTOR		
SIZE	DRAWING NO.	REV.
A3	C ME10000401P0011	2
SCALE	NONE	SHEET 3 OF 3