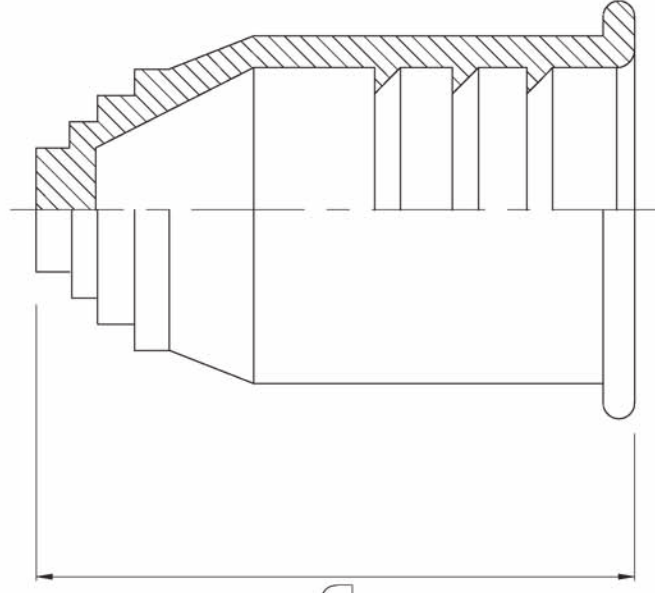


THIS DRAWING IS UNPUBLISHED.
 © COPYRIGHT BY TYCO ELECTRONICS CORPORATION. ALL RIGHTS RESERVED.

RELEASED FOR PUBLICATION
 DATE 9/30/04

REV	DATE	DESCRIPTION	BY	CHK
0				
1	9/30/04	REVISED PER 063B-0884-04		



AD

- 1. Material: Santoprene
- 2. Color: black
- 3. Packaging neutral with label acc. AMP specification: 107-18054
- 4. DIN 16901-140

Supplier:
 FLEXA GmbH & Co. KG
 Darmstaedter Strasse 184
 D-63456 Hanau-Steinheim
 Phone: +49 61 81 677-0
 FAX: +49 61 81 677 277

QTY	UNIT	IN [mm]	OUTER Ø	INNER Ø	LENGTH	WEIGHT	TRADE SIZE	AMP #
1	Pieces	2	1/2	[95.0]	1-969847-0			
2	Pieces	2	[70.0]		969847-9			
3	Pieces	1	1/2	[54.5]	969847-8			
4	Pieces	1	1/4	[42.5]	969847-7			
5	Pieces	6	29	1	[34.5]	969847-6		
6	Pieces	6	23	3/4	[28.5]	969847-5		
7	Pieces	6	16.5	1/2	[21.2]	969847-4		
8	Pieces	4	12	3/8	[15.8]	969847-3		
9	Pieces	1	10	1/4	[13.0]	969847-2		
10	Pieces	1	8	1/8	[10.0]	969847-1		

kg/100p Pieces IN [mm] AD
 APPROX PACKAGING UNIT CABLE Ø OUTER TRADE SIZE AMP #

THIS DRAWING IS A CONTROLLED DOCUMENT.
 ENGINEER: K. LAMBERT
 DRAWING NO: 969847-0

0 P/LC	1 P/LC	2 P/LC	3 P/LC	4 P/LC
0 P/LC	1 P/LC	2 P/LC	3 P/LC	4 P/LC
0 P/LC	1 P/LC	2 P/LC	3 P/LC	4 P/LC
0 P/LC	1 P/LC	2 P/LC	3 P/LC	4 P/LC

PRODUCT SPEC: TRANSITIONAL SPOUT TUBING, CABLE
 APPLICATION SPEC: TRANSITIONAL SPOUT TUBING, CABLE
 WEIGHT: --
 FINISH: --
 MATERIAL: --
 SIZE: A2 00779
 SCALE: 1:1
 SHEET: 1 OF 1