

## Surge protection device - PT-IQ-4X1-5DC-UT - 2801215

Please be informed that the data shown in this PDF Document is generated from our Online Catalog. Please find the complete data in the user's documentation. Our General Terms of Use for Downloads are valid (<http://phoenixcontact.com/download>)



Surge protection, consisting of protective plug and base element, with integrated multi-stage status indicator on the module for four signal wires with common reference potential.

The figure shows the PT-IQ-2x2-24DC-UT version



### Key commercial data

Packing unit	1 pc
Custom tariff number	85363010
Country of origin	Germany

### Technical data

#### Dimensions

Height	91.1 mm
Width	17.7 mm
Depth	77.5 mm
Horizontal pitch	1 Div.

#### Ambient conditions

Ambient temperature (operation)	-40 °C ... 70 °C
Ambient temperature (storage/transport)	-40 °C ... 85 °C
Degree of protection	IP20

#### General

Housing material	PA 6.6
Inflammability class according to UL 94	V0
Color	black

## Surge protection device - PT-IQ-4X1-5DC-UT - 2801215

### Technical data

#### General

Mounting type	DIN rail mounting
Type	DIN rail module, two-section, divisible
Direction of action	Line-Line & Line-Signal Ground/Shield & optional Signal Ground/Shield-Earth Ground

#### Protective circuit

IEC test classification	C1
	C2
	C3
	D1
Nominal voltage $U_N$	5 V
Maximum continuous voltage $U_C$	6 V DC
	4 V AC
Nominal current $I_N$	700 mA (50 °C)
Operating effective current $I_C$ at $U_C$	$\leq 2$ mA (per path)
Residual current $I_{PE}$	$\leq 2$ mA (per path)
Nominal discharge current $I_n$ (8/20) $\mu$ s (Core-Earth)	10 kA
Total surge current (8/20) $\mu$ s	20 kA
Impulse discharge current (10/350) $\mu$ s, peak value $I_{imp}$	2.5 kA
Voltage protection level $U_p$ (core-ground)	$\leq 120$ V (C1 - 1 kV/500 A)
	$\leq 150$ V (C2 - 10 kV / 5 kA)
	$\leq 25$ V (C3 - 25 A)
	$\leq 25$ V (C3 - 50 A)
Response time $t_A$ (Core-Earth)	$\leq 1$ ns
	$\leq 1$ ns
Input attenuation $a_E$ , asym.	typ. 0.3 dB ( $\leq 45$ kHz)
Cut-off frequency $f_g$ (3 dB), asym. (PE) in 150 Ohm system	typ. 300 kHz
Capacity (Core-Earth)	7.5 nF
Resistance in series	1.2 $\Omega$ $\pm 5$ %
Surge protection fault message	Optical, multi-stage
Max. required back-up fuse	800 mA (FF)
Impulse durability (conductor-ground)	C1 (1 kV / 500 A)
	C2 (10 kV / 5 kA)
	C2 (10 kA)
	C3 (25 A)
	C3 (50 A)
	D1 - 2,5 kA
Pulse reset time (conductor-ground)	$\leq 10$ ms

# Surge protection device - PT-IQ-4X1-5DC-UT - 2801215

## Technical data

### Protective circuit

Overload failure mode (connector)	Mode 2
-----------------------------------	--------

### Connection data

Connection method	Screw connection
Connection type IN	Screw terminal blocks
Connection type OUT	Screw terminal blocks
Screw thread	M3
Tightening torque	0.5 Nm
Stripping length	8 mm
Conductor cross section flexible min.	0.2 mm <sup>2</sup>
Conductor cross section flexible max.	2.5 mm <sup>2</sup>
Conductor cross section solid min.	0.2 mm <sup>2</sup>
Conductor cross section solid max.	4 mm <sup>2</sup>
Conductor cross section AWG min.	24
Conductor cross section AWG max.	12

### Connection, equipotential bonding

Connection method	NS 35 DIN rail or connection terminal block
-------------------	---

## Classifications

### eCl@ss

eCl@ss 4.0	27140201
eCl@ss 4.1	27130801
eCl@ss 5.0	27130801
eCl@ss 5.1	27130801
eCl@ss 6.0	27130807
eCl@ss 7.0	27130807
eCl@ss 8.0	27130807

### ETIM

ETIM 3.0	EC000943
ETIM 4.0	EC000943
ETIM 5.0	EC000943

### UNSPSC

UNSPSC 6.01	30212010
UNSPSC 7.0901	39121610
UNSPSC 11	39121610

# Surge protection device - PT-IQ-4X1-5DC-UT - 2801215

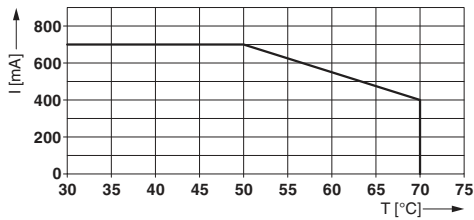
## Classifications

### UNSPSC

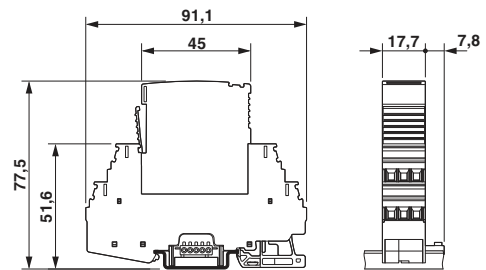
UNSPSC 12.01	39121610
UNSPSC 13.2	39121620

## Drawings

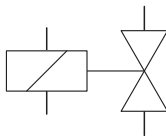
Diagram



Dimensional drawing



Product drawing



Circuit diagram

