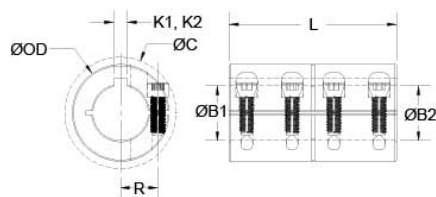




CLC-14-14-F

Ruland CLC-14-14-F, 7/8" x 7/8" Rigid Coupling, Black Oxide Steel, One-Piece Clamp Style with Keyway, 1 5/8" OD, 2 1/2" Length



Description

Ruland CLC-14-14-F is a one-piece rigid coupling with 0.8750" x 0.8750" bores, 1 5/8" OD, 2 1/2" length, and 3/16" x 3/16" keyways. It has precision honed bores to ensure they are collinear and do not introduce misalignment or vibration into the system making it suitable for high precision servo applications as well as shaft to shaft connections. Proprietary Nypatch® anti-vibration coating on hardware allows for even seating of the screw, repeated screw installations, prevents galling, and maintains high holding power. It eliminates the need to treat screws upon receipt greatly reducing installation time. Forged screws test beyond ANSI standards to ensure maximum holding power. Tightly controlled bore tolerance of +.002"/+.0005" is maintained. CLC-14-14-F is made from 1215 lead-free steel with a proprietary black oxide finish that produces a fine glossy finish while increasing holding power and resisting corrosion. It is machined from solid bar stock that is sourced exclusively from North American mills and is RoHS3 and REACH compliant. CLC-14-14-F is manufactured in our Marlborough, MA factory under strict controls using proprietary processes.

Product Specifications

Bore (B1)	0.8750 in	Small Bore (B2)	0.8750 in
Keyway (K1)	3/16 in	Keyway (K2)	3/16 in
B1 Max Shaft Penetration	1.250 in	B2 Max Shaft Penetration	1.250 in
Outer Diameter (OD)	1 5/8 in	Bore Tolerance	+0.0020 in / +0.0005 in
Length (L)	2 1/2 in	Clearance Diameter (C) MAX	1.932 in
Recommended Shaft Tolerance	+0.0000 in / -0.0005 in	Forged Clamp Screw	1/4-28
Screw Material	Alloy Steel with Nypatch®	Hex Wrench Size	3/16 in
Screw Finish	Black Oxide	Seating Torque	170 lb-in
Screw Location (R)	0.600 in	Number of Screws	4 ea
Rated Torque	3600 in-lb	Moment of Inertia	0.4145 lb-in ²
Maximum Speed	4,000 RPM	Nypatch® Anti-Vibration Hardware?	Yes
Precision Honed Bores?	Yes	Zero-Backlash?	Yes
Material Specification	1215 Carbon Steel Bar	Temperature	-40°F to 350°F (-40°C to 176°C)
Finish Specification	Hot Process Black Oxide, Impregnated with Naphthenic Oil, Centrifugally Dried	Manufacturer	Ruland Manufacturing
Country of Origin	USA	Weight (lbs)	0.963700
UPC	634529001707	Tariff Code	8483.60.8000
Note 1	Performance ratings are for guidance only. The user must determine suitability for a particular application.		
Prop 65	⚠ WARNING This product can expose you to the chemical Ethylene Thiourea, known to the State of California to cause cancer and birth defects or other reproductive harm. For more information go to www.P65Warnings.ca.gov .		

Installation Instructions

1. Align the CLC-14-14-F one-piece rigid coupling on the two shafts to be connected. There should be no misalignment.
2. Tighten the Nypatch® screws in two stages, starting with the inside screws. Using a 3/16 in torque wrench, tighten the inside screws to 85 lb-in which is half the recommended seating torque. Repeat for the outside screws, again tightening to half of the recommended seating torque.
3. Tighten the screws to the full recommended seating torque of 170 lb-in following the same pattern, starting with the inside screws first.

