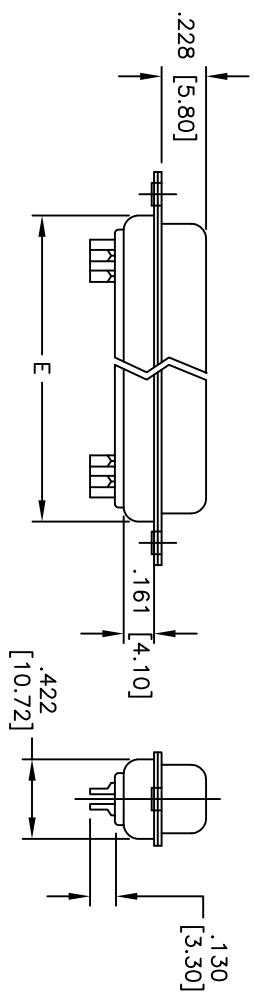
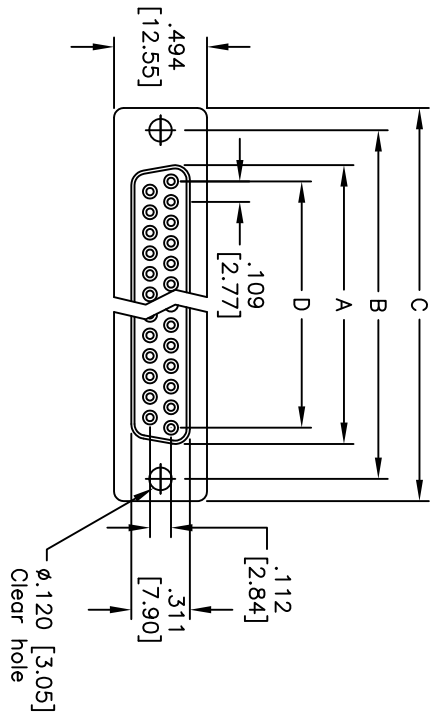


APPROVED: _____
 DATE: _____ TITLE: _____

Rev	AWO #	Description	Date	Appr
-		RELEASED	4/28/05	
A		REDRAWN	7/4/13	
B		REVISED SPEC.	12/27/14	AY



Dimensions

Positions	A	B	C	D	E
09	.643 [16.33]	.984 [24.99]	1.213 [30.81]	.436 [11.08]	.756 [19.20]
15	.971 [24.66]	1.312 [33.32]	1.541 [39.14]	.763 [19.39]	1.091 [27.70]
25	1.511 [38.38]	1.852 [47.04]	2.088 [53.04]	1.309 [33.24]	1.618 [41.10]
37	2.159 [54.84]	2.500 [63.50]	2.729 [69.32]	1.963 [49.86]	2.256 [57.30]

SPECIFICATIONS:
 Material: _____
 Insulator: Glass-Filled Thermoplastic PBT, rated UL 94V-0
 Insulator color: Black
 Contacts: Copper Alloy
 Shell: Steel, Tin plated
 Plating: _____
 Gold flash over Nickel underplate on mating area
 Electrical:
 Operating voltage: 250 VAC max
 Current rating: 3 Amps max
 Contact resistance: 20 mohms max
 Insulation resistance: 1,000 Mohms @ 500 VDC
 Dielectric withstanding voltage: 1,000 VAC for 1 minute
 Temperature Rating:
 Operating temperature: -20°C to +85°C
 Environmental:
 Lead free, RoHS compliant

UNLESS OTHERWISE SPECIFIED
 ALL DIMENSIONS ARE INCHES [MM]
 TOLERANCES: EXCEPT AS NOTED
 INCHES Holes ±.10
 .X ±.10 ØXX ±.10
 .XX ±.020 ØXXX ±.015
 .XXX ±.015 ØXXXX ±.010

ADAM TECH

909 Railway Avenue, Union, NJ 07083
 Phone: 908-687-5000 Fax: 908-687-5710

TITLE: D-SUB SOCKET, SOLDER CUP
 .118 [3.00] MOUNTING HOLES

APPROVALS	DATE	SIZE	PART NO.	SCALE	SHEET	REV.
DRAWN	SS				4/28/05	
CHECKED		X	DXXX-SD	NIS		B
APPROVED						