

# STACKABLE PANEL MOUNT FUSE HOLDER

with Wire Leads for ATO® Style Blade Fuse



## Description

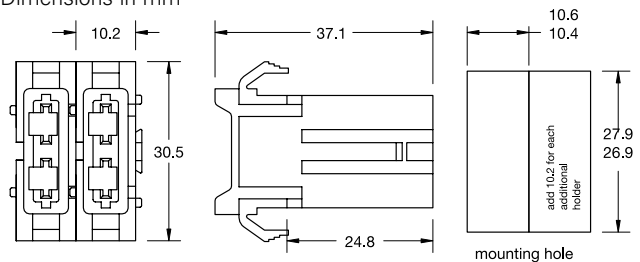
Intended for use with 32V ATO®/ FKS Fuses rated up to 20A or 30A.

## Ordering Information

Part Number	Package Size
01550xxxLXN	50
01550xxxZ	100

## Dimensions

Dimensions in mm



## Ratings

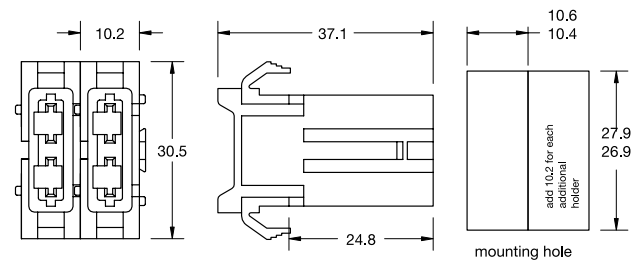
Part Number	Description	Fuse Rating
01550300_	14AWG/2.1mm <sup>2</sup> stranded black wire	20 A
01550400_	10AWG/5.3mm <sup>2</sup> stranded orange wire	30 A

# ATO® PANEL MOUNT HOLDER COMPONENTS



## Dimensions

Dimensions in mm



## Ratings

Part Number	Description	Fuse Rating
868-062-000	Housing only, color black - 2700 pcs.	-
913-008	Reeled Terminals A, wire 14AWG/2.1mm <sup>2</sup> -2000 pcs.	20A
913-008-001	Singe Terminals A, wire 14AWG/2.1mm <sup>2</sup> -1000 pcs.	20A
913-007	Reeled Terminals B, wire 10AWG/5.3mm <sup>2</sup> - 2000 pcs.	30A
913-007-001	Singe Terminals B, wire 10AWG/5.3mm <sup>2</sup> -1000 pcs.	30A