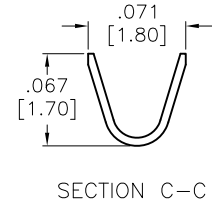
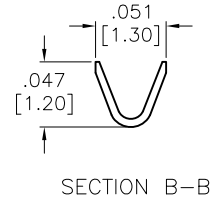
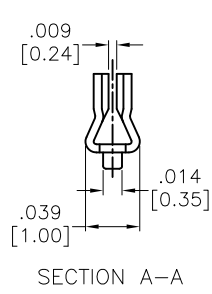
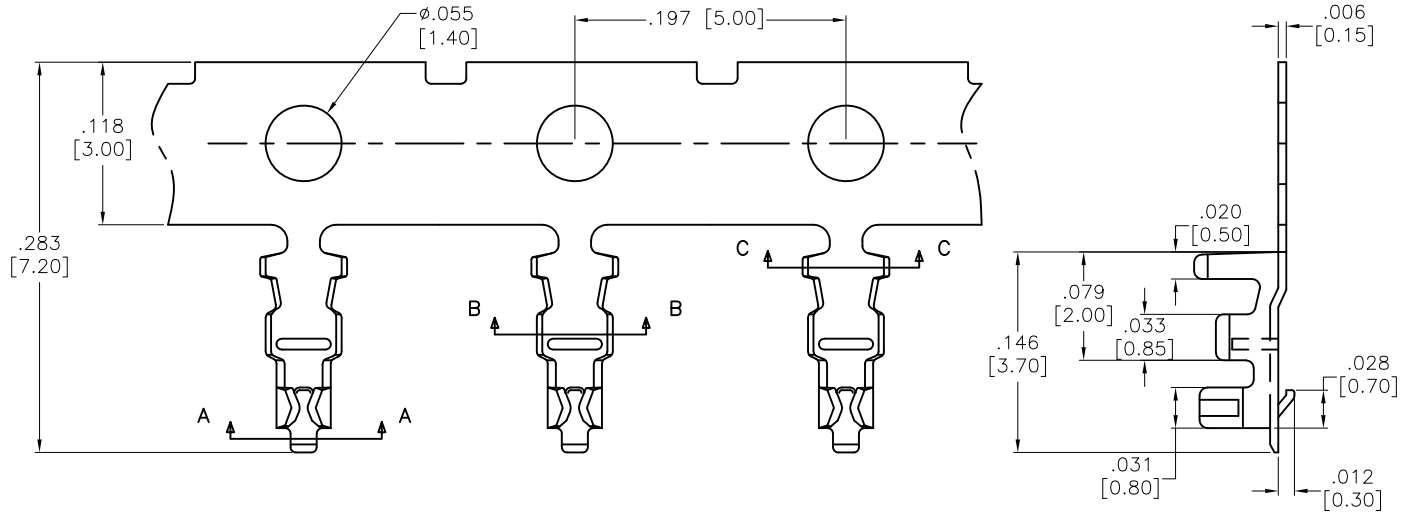


Rev	AWO #	Description	Date	Appr
-		RELEASED	12/15/17	

APPROVED: _____
 DATE: _____ TITLE: _____



SPECIFICATIONS:
 Material: Phosphor Bronze
 Plating: Tin Plated
 Thickness: 0.15mm
 Applicable Wire: AWG#26~#30
 Electrical:
 Voltage Rating: 150V AC,DC
 Current Rating: 1A AC,DC
 Contact Resistance: 20 mohms max
 Insulation resistance: 1000 Mohms min
 Dielectric withstanding voltage: 500 VAC for 1 minute
 -25°C to +85°C
 Environmental:
 Lead free, RoHS compliant.

UNLESS OTHERWISE SPECIFIED ALL DIMENSIONS ARE INCHES [MM] TOLERANCES: EXCEPT AS NOTED		
INCHES		
.X ± .10	Ø.X ± .10	HOLES
.XX ± .020	Ø.XX ± .015	
.XXX ± .015	Ø.XXX ± .010	
APPROVALS		DATE
DRAWN	AY	12/15/17
CHECKED	MY	12/15/17
APPROVED		

ADAM TECH INTERCONNECTS

909 Rahway Avenue,
 Union, NJ 07083
 Phone: 908-687-5000
 Fax: 908-687-5710

TITLE: 1.25MM TERMINAL FOR 125CHD-XX

SIZE X	PART NO. 125CTDC-R	REV. -
REF: S00124T	SCALE: NTS	SHEET 1 OF 1

6

5

4

3

2

1

6

5

4

3

2

1