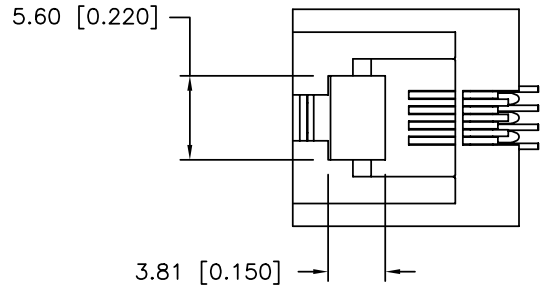
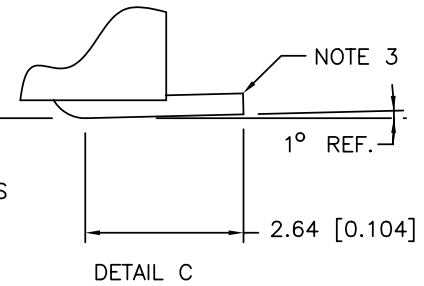
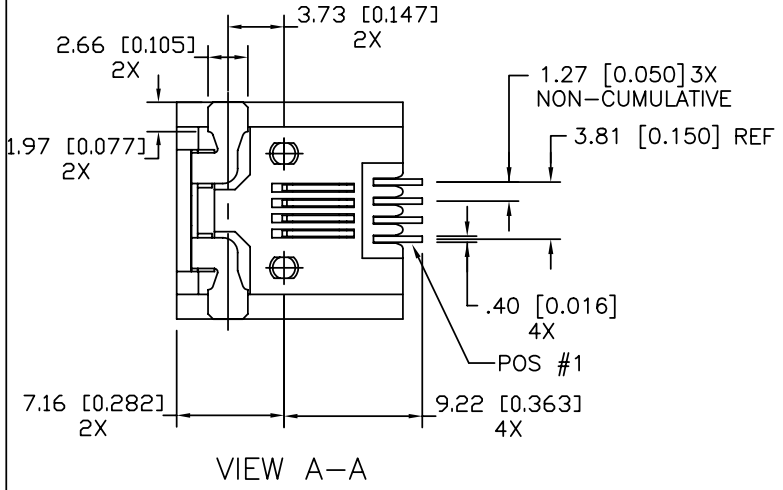
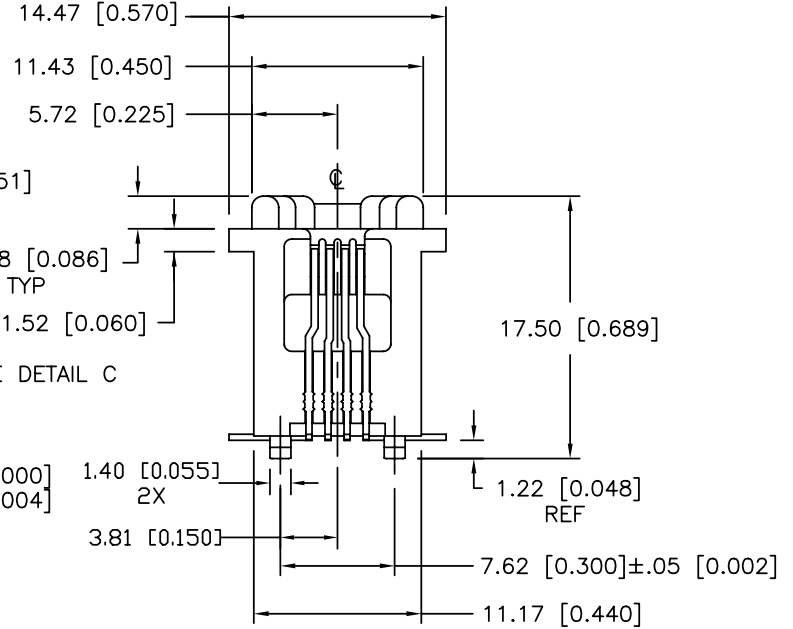
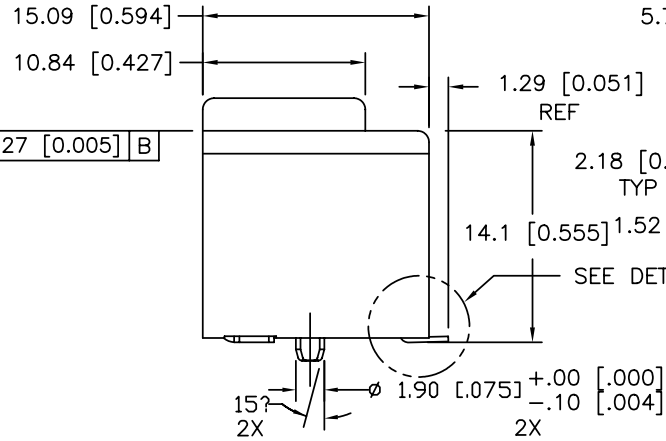
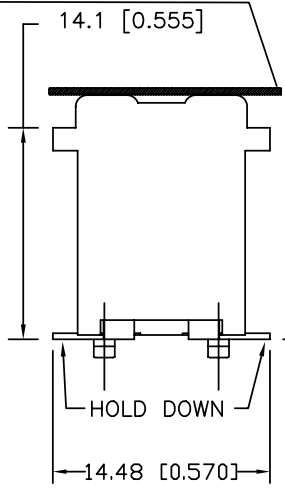


PRODUCT NO.

SEE TABLE



THE MYLAR ONLY FOR 87543-XXX1C/XXX1CLF SEE NOTE 7

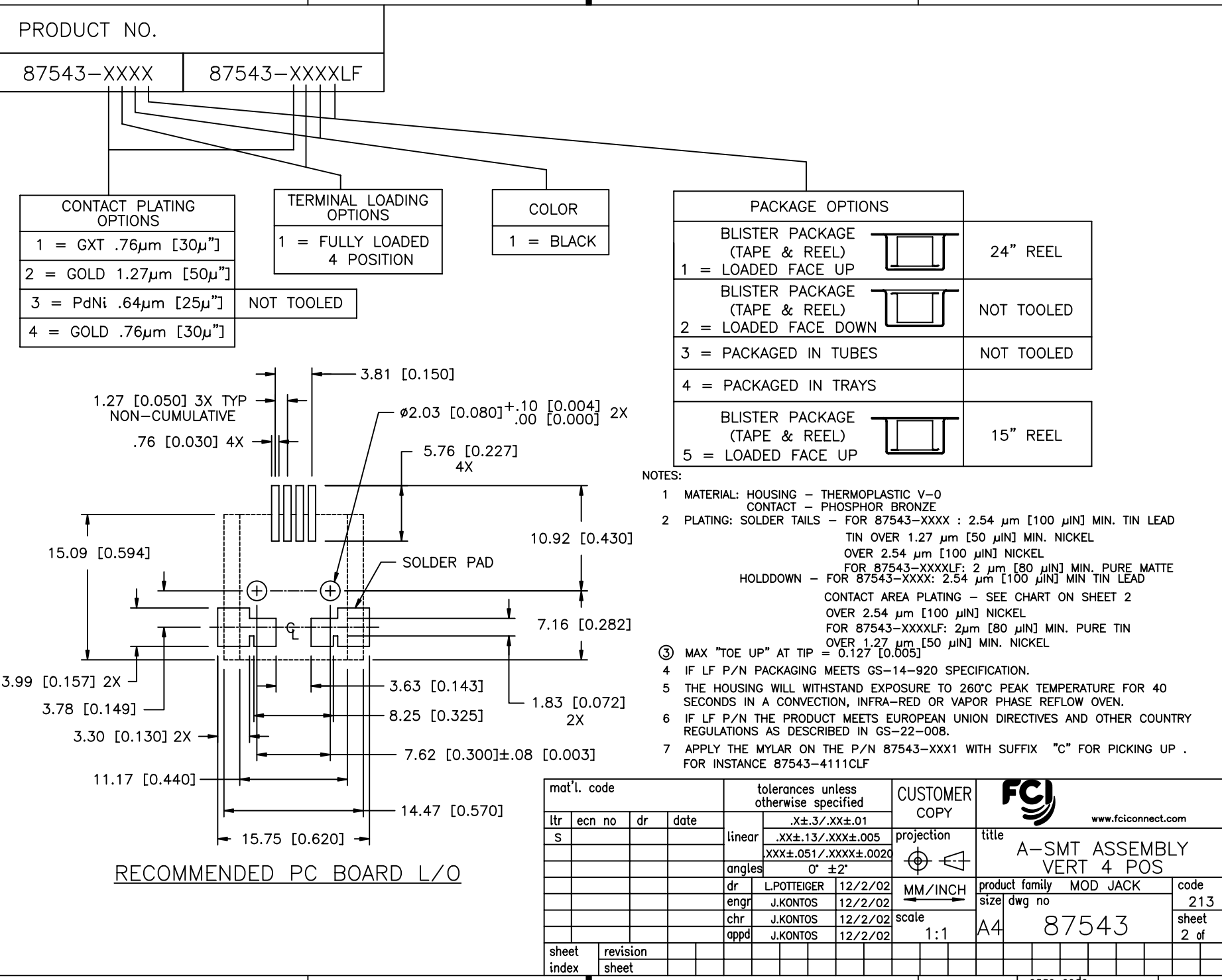


mat'l. code				tolerances unless otherwise specified			CUSTOMER COPY		FCI www.fciconnect.com		
ltr	ecn no	dr	date	linear	.X±.3/.XX±.01		projection	title A-SMT ASSEMBLY VERT 4 POS			
S	N08-0194	SH	09/08/08		.XX±.13/.XXX±.005						
K	V12666	LP	1/10/02	angles	XXX±.051/.XXX±.0020		MM/INCH	product family MOD JACK code size dwg no 213			
L	V21834	LP	12/2/02		0° ±2'						
M	V04-0861	DAI	08/30/04	dr	L.POTTEIGER	12/2/02	scale	A4 87543 sheet 1 of 2			
N	N05-0035	YS	02/17/05	enr	J.KONTOS	12/2/02	1:1				
P	N05-0142	ZC	6/2/05	chr	J.KONTOS	12/2/02	cage code 2526 Aug 01, 2010				
R	N07-0217	WG	09/07/07	appd	J.KONTOS	12/2/02					
sheet index	revision	R	R								
	sheet	1	2								

Tous droits strictement reserves. Reproduction ou communication a des tiers interdite sous quelque forme que ce soit sans autorisation ecrite du proprietaire. Propriete de c FCI. Droits de reproduction FCI.
 All rights strictly reserved. Reproduction or issue to third parties in any form whatever is not permitted without written authority from the proprietor. Property of FCI. Copyright FCI.

Tous droits strictement réservés. Reproduction ou communication à des tiers interdite sous quelque forme que ce soit sans autorisation écrite du propriétaire. Propriété de c FCI. Droits de reproduction FCI.

All rights strictly reserved. Reproduction or issue to third parties in any form whatever is not permitted without written authority from the proprietor. Property of FCI. Copyright FCI.



PRODUCT NO.	
87543-XXXX	87543-XXXXLF

CONTACT PLATING OPTIONS	
1 = GXT .76µm [30µ"]	
2 = GOLD 1.27µm [50µ"]	
3 = PdNi .64µm [25µ"]	NOT TOOLED
4 = GOLD .76µm [30µ"]	

TERMINAL LOADING OPTIONS	
1 = FULLY LOADED	
4 POSITION	

COLOR	
1 = BLACK	

PACKAGE OPTIONS		
BLISTER PACKAGE (TAPE & REEL)		24" REEL
1 = LOADED FACE UP		
BLISTER PACKAGE (TAPE & REEL)		NOT TOOLED
2 = LOADED FACE DOWN		
3 = PACKAGED IN TUBES		NOT TOOLED
4 = PACKAGED IN TRAYS		
BLISTER PACKAGE (TAPE & REEL)		15" REEL
5 = LOADED FACE UP		

- NOTES:
- MATERIAL: HOUSING - THERMOPLASTIC V-0
CONTACT - PHOSPHOR BRONZE
 - PLATING: SOLDER TAILS - FOR 87543-XXXX : 2.54 µm [100 µIN] MIN. TIN LEAD
TIN OVER 1.27 µm [50 µIN] MIN. NICKEL
OVER 2.54 µm [100 µIN] NICKEL
FOR 87543-XXXXLF: 2 µm [80 µIN] MIN. PURE MATTE
HOLDDOWN - FOR 87543-XXXX: 2.54 µm [100 µIN] MIN TIN LEAD
CONTACT AREA PLATING - SEE CHART ON SHEET 2
OVER 2.54 µm [100 µIN] NICKEL
FOR 87543-XXXXLF: 2µm [80 µIN] MIN. PURE TIN
OVER 1.27 µm [50 µIN] MIN. NICKEL
 - MAX "TOE UP" AT TIP = 0.127 [0.005]
 - IF LF P/N PACKAGING MEETS GS-14-920 SPECIFICATION.
 - THE HOUSING WILL WITHSTAND EXPOSURE TO 260°C PEAK TEMPERATURE FOR 40 SECONDS IN A CONVECTION, INFRA-RED OR VAPOR PHASE REFLOW OVEN.
 - IF LF P/N THE PRODUCT MEETS EUROPEAN UNION DIRECTIVES AND OTHER COUNTRY REGULATIONS AS DESCRIBED IN GS-22-008.
 - APPLY THE MYLAR ON THE P/N 87543-XXX1 WITH SUFFIX "C" FOR PICKING UP .
FOR INSTANCE 87543-4111CLF

mat'l. code		tolerances unless otherwise specified		CUSTOMER COPY		FCI www.fciconnect.com	
ltr	ecn no	dr	date	linear	projection	title	
s				.x±.3/.xx±.01		A-SMT ASSEMBLY VERT 4 POS	
				.XX±.13/.XXX±.005		product family	MOD JACK
				.XXX±.051/.XXX±.0020		size	dwg no
				angles	MM/INCH	213	
				0° ±2'	←	87543	
				dr	L.POTTEIGER	scale	1:1
				enr	J.KONTOS	A4	
				chr	J.KONTOS		
				appd	J.KONTOS		
sheet index	revision sheet						

RECOMMENDED PC BOARD L/O