

CLASS K5 – NLN/NLS SERIES (ONE-TIME) FUSES

250/600 V ac • “One-Time” • 1-600 A



Description

NLN/NLS fuses provide low cost protection for general purpose feeder and branch circuits when available short circuit currents are less than 50 kA.

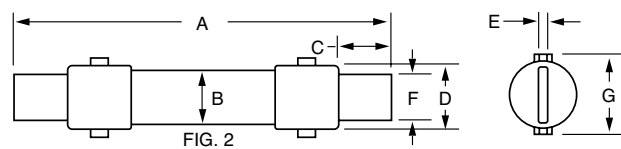
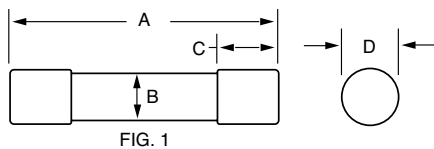
Applications

- General purpose residential and commercial circuits with little or no motor load.

Features/Benefits

- Economical
- 50 kA interrupting rating
- Indicating and DIN mount holders available

Dimensions



| AMPERES | REFER TO FIG. NO. | SERIES | DIMENSIONS INCHES (mm) | | | | | | |
|-----------|-------------------|--------|------------------------|-----------|------------|--------------|------------|-----------|-----------|
| | | | A | B | C | D | E | F | G |
| 1 – 30 | 1 | NLN | 2 (50.8) | ½ (12.7) | ½ (12.7) | 9/16 (14.3) | — | — | — |
| | | NLS | 5 (127.0) | ¾ (19.1) | 5/8 (15.9) | 13/16 (20.6) | — | — | — |
| 35 – 60 | 1 | NLN | 3 (76.2) | ¾ (19.1) | 5/8 (15.9) | 13/16 (20.6) | — | — | — |
| | | NLS | 5½ (139.7) | 1 (25.4) | 5/8 (15.9) | 1½ (27.0) | — | — | — |
| 70 – 100 | 2 | NLN | 5½ (149.2) | 1 (25.4) | 1 (25.4) | 1½ (27.0) | ⅞ (3.2) | ¾ (19.1) | 1½ (33.3) |
| | | NLS | 7½ (200.0) | 1¼ (31.8) | 1 (25.4) | 1½ (33.3) | ⅞ (3.2) | ¾ (19.1) | 1½ (39.7) |
| 110 – 200 | 2 | NLN | 7½ (181.0) | 1½ (38.1) | 1¾ (34.9) | 1½ (39.7) | 3/16 (4.8) | 1½ (28.6) | 1¾ (47.6) |
| | | NLS | 9½ (244.5) | 1¾ (44.5) | 1¾ (34.9) | 1¾ (46.8) | 3/16 (4.8) | 1½ (28.6) | 2¾ (53.2) |
| 225 – 400 | 2 | NLN | 8½ (219.1) | 2 (50.8) | 1¾ (47.6) | 2¾ (53.2) | ¼ (6.4) | 1½ (41.3) | 2¾ (61.1) |
| | | NLS | 11½ (295.3) | 2½ (63.5) | 1¾ (47.6) | 2¾ (65.9) | ¼ (6.4) | 1½ (41.3) | 2¾ (73.0) |
| 450 – 600 | 2 | NLN | 10¾ (263.5) | 2½ (63.5) | 2¼ (57.2) | 2¾ (65.9) | ¼ (6.4) | 2 (50.8) | 2¾ (73.0) |
| | | NLS | 13¾ (339.7) | 3 (76.2) | 2¼ (57.2) | 3¾ (78.6) | ¼ (6.4) | 2 (50.8) | 3¾ (87.3) |

Specifications

Voltage Ratings

Ac: 250 V (NLN)
600 V (NLS)
Dc: 250 V (NLN)
400 V (NLS 35 – 60 A)
500 V (NLS 8 – 30 A) (NLS 225 – 600 A)
600 V (NLS 1 – 7 A) (NLS 70 – 200 A)

Interrupting Ratings

Ac: 50 kA rms symmetrical (NLN/NLS)
Dc: 20 kA (NLN/NLS 1 – 60 A)
50 kA (NLN/NLS 70 – 600 A)

Ampere Range

1 – 600 A (NLN/NLS)

Approvals

NLN/NLS: Standard 248-9, Class K5
UL Listed (File: E81895)
CSA Certified (File: LR29862)
CE Compliant (NLN series only)
RoHS compliant (NLN series only)

Environmental

Ordering Information

| AMPERE RATINGS | | | | | |
|----------------|----|----|-----|-----|-----|
| 1 | 7 | 25 | 60 | 125 | 300 |
| 2 | 8 | 30 | 70 | 150 | 350 |
| 3 | 10 | 35 | 80 | 175 | 400 |
| 4 | 12 | 40 | 90 | 200 | 450 |
| 5 | 15 | 45 | 100 | 225 | 500 |
| 6 | 20 | 50 | 110 | 250 | 600 |

| SERIES | AMPERAGE | CATALOG NUMBER | ORDERING NUMBER |
|--------|----------|----------------|-----------------|
| NLS | 20 | NLS020 | 0NLS020.T |
| NLN | 15 | NLN015 | 0NLN015.T |

Web Resources

Download TC Curves, CAD drawings and other technical information: littelfuse.com/nln
littelfuse.com/nls

Recommended Fuse Holders

LFH60 Series • LFH25 Series

CLASS K5 – NLN/NLS SERIES (ONE-TIME) FUSES

Electrical Specification chart

| CATALOG NUMBER | AMPERAGE RATING | VOLTAGE RATING | | INTERRUPT RATING | | TOTAL CLEARING I ² T (A ² s) |
|----------------|-----------------|----------------|-----|------------------|-------|--|
| | | AC | DC | AC | DC | 200 kA @ 600V |
| ONLS015.T | 15 | 600 | 500 | 200 kA | 20 kA | 4940 |
| ONLS030.T | 30 | 600 | 500 | 200 kA | 20 kA | 21600 |
| ONLS060.T | 60 | 600 | 400 | 200 kA | 20 kA | 164000 |
| ONLS100.V | 100 | 600 | 600 | 200 kA | 20 kA | 158000 |
| ONLS200.X | 200 | 600 | 600 | 200 kA | 20 kA | 371000 |
| ONLS400.X | 400 | 600 | 500 | 200 kA | 20 kA | 1510000 |
| ONLS600.X | 600 | 600 | 500 | 200 kA | 20 kA | 6920000 |

| CATALOG NUMBER | AMPERAGE RATING | VOLTAGE RATING | | INTERRUPT RATING | | TOTAL CLEARING I ² T (A ² s) |
|----------------|-----------------|----------------|-----|------------------|-------|--|
| | | AC | DC | AC | DC | 200 kA @ 250V |
| ONLN015.T | 15 | 250 | 250 | 200 kA | 20 kA | 634 |
| ONLN100.V | 100 | 250 | 250 | 200 kA | 20 kA | 50000 |
| ONLN200.X | 200 | 250 | 250 | 200 kA | 20 kA | 260000 |
| ONLN400.X | 400 | 250 | 250 | 200 kA | 20 kA | 1510000 |
| ONLN600.X | 600 | 250 | 250 | 200 kA | 20 kA | 4846000 |

Disclaimer Notice – Information furnished is believed to be accurate and reliable. However, users should independently evaluate the suitability of and test each product selected for their own applications. Littelfuse products are not designed for, and may not be used in, all applications. Read complete Disclaimer Notice at www.littelfuse.com/product-disclaimer.