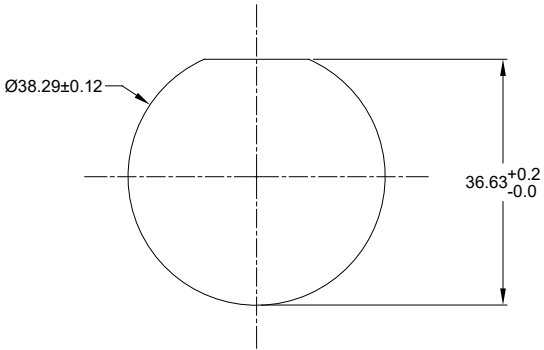


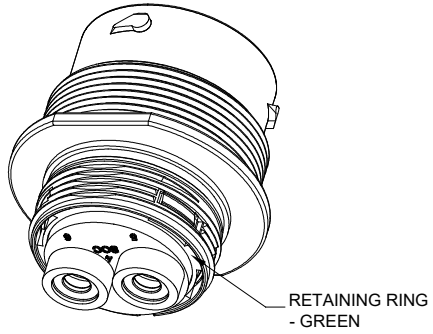
| REVISIONS |     |                         |           |        |       |
|-----------|-----|-------------------------|-----------|--------|-------|
| REV       | ECO | DESCRIPTION             | DATE      | BY     | APPR  |
| A1        | --  | RELEASE NEW PRODUCT     | 13MAR20   | ROOKIE | TOMMY |
| A2        | --  | REVISED MATING P/N NOTE | 08/APR/20 | JAH    | DH    |

NOTES: UNLESS OTHERWISE SPECIFIED

- MATERIAL:  
SHELL: ZINC ALLOY, NICKEL PLATED  
INSERT AND RETAINING RING: THERMOPLASTIC  
SEAL: SILICONE RUBBER
- MODIFICATIONS: THREADED HOUSING; NORMAL DIA. SEAL
- SPECIFICATIONS:  
3.1 OPERATING TEMPERATURE: -55°C TO +125°C.  
3.2 DIELECTRIC WITHSTANDING VOLTAGE: LESS THAN 2 MILLIAMPS CURRENT LEAKAGE @ 1500 VOLTS AC.  
3.3 INSULATION RESISTANCE: 1000 MEGOHM MIN @ 25°C.  
3.4 MOISTURE RESISTANCE: IP67&IP69K ( MATED CONDITION ).  
3.5 MATING CYCLE DURABILITY: 100 CYCLES  
3.6 RoHS COMPLIANT
- MATING PART: AHDM06-18-06P\* (\* = SEAL TYPE) (C030 OPTION)
- ALL DIMENSIONS ARE FOR REFERENCE USE ONLY.



RECOMMENDED PANEL MOUNTING HOLE  
RECOMMENDED PANEL THICKNESS: 1.6 TO 4.7MM



6. CONTACT SIZE AND WIRE RANGE:

| CONTACT SIZE | MIN. INSUL O.D.  | MAX. INSUL O.D.   | TYPICAL WIRE RANGE | CURRENT RATING |
|--------------|------------------|-------------------|--------------------|----------------|
| 4            | 6.63 mm (.261in) | 7.41 mm (.292 in) | 4-6 AWG            | 100 AMPS       |

|  |                |  |  |
|--|----------------|--|--|
| AHDM04-18-06SN-C030  |                | H034-18-06SN-C030  |  |
| PART NUMBER  |                | DESCRIPTION  |  |
| QUANTITY   | MATERIALS LIST |  |  |
| UNLESS OTHERWISE SPECIFIED:<br>1) All dimensions are in metric (mm).<br>2) Tolerances are as follows:<br>1 PL DEC ±0.30 Fractions ±1/64<br>2 PL DEC ±0.15 Angles ±1°<br>3 PL DEC ±0.08 |                |  |  |
| SIGNATURES   |                | DATE   |  |
| DRAWN: ROOKIE  |                | 13MAR20  |  |
| CHECKED: ORION   |                | 13MAR20  |  |
| ENGINEER:  |                |  |  |
| APPROVAL: TOMMY  |                | 13MAR20  |  |
| MATERIAL SPECIFICATIONS:   |                | CUSTOMER:  |  |
| PROCESS SPECIFICATIONS:  |                | THIS DRAWING IS SUPPLIED FOR INFORMATION ONLY. DESIGN FEATURES, SPECIFICATIONS AND PERFORMANCE DATA SHOWN HEREON ARE THE PROPERTY OF THE AMPHENOL CORPORATION. NO RIGHTS OF REPRODUCTION ARE IMPLIED. ALL DIMENSIONS ARE SUBJECT TO NORMAL MANUFACTURING VARIATIONS. |  |
| NEXT ASSY:   |                | SCALE: NONE  |  |
|  |                | SHEET 1 OF 1   |  |

**Amphenol**  
Sine Systems - www.amphenol-sine.com  
44724 Morley Drive  
Clinton Township, MI 48036





**DURAMATE, RECEPTACLE, SIZE 18  
2 SOCKET, NORMAL SEAL, WIDE THD ADAPTER**

SIZE: **B C-** DWG NO: **AHDM04-18-06SN-C030** REVISION: **A2**

TITLE: RECEPT. 18 SZ 02 SOCKET, N. WIDE THD  
DWG NO: AHDM04-18-06SN-C030  
REV: A2  
SH: 1  
OF: 1

## DuraMate™ ATHD Series™ - Contact Size 4 Options

| Machined Contacts, Pins and Sockets |  |      |     |          |      |
|-------------------------------------|--|------|-----|----------|------|
| Part Number                         | Description  | Size | AWG | Type     | Amps |
| AT60-203-04141-4                    | Male Contact - Pin, Copper Alloy, Nickel-Plated      | 4    | 4   | Machined | 100A |
| AT60-204-0490                       | Male Contact - Pin, Copper Alloy, Nickel-Plated      | 4    | 6   | Machined | 100A |
| AT62-203-04141-4                    | Female Contact - Socket, Copper Alloy, Nickel-Plated | 4    | 4   | Machined | 100A |
| AT62-203-04141                      | Female Contact - Socket, Copper Alloy, Nickel-Plated | 4    | 6   | Machined | 100A |

| Tooling - Machined Contacts   |             |  |
|---|-------------|--|
| Part  | Part Number | Description  |
|  | WA23        | Heavy Duty Pneumatic Crimp Tool<br>-Uses Universal Positioner Part No. WA23-101DA and Crimp Locator MFX-3961 |
|  | WA23-138DA  | Die Assembly<br>-for Heavy Duty Pneumatic Crimp Tool, Size 4   |
|  | WA23-11     | Contact Locator, Size 4  |
|  | 96-978-22   | Crimper and Dies<br>-for Size 10mm <sup>2</sup> -185mm <sup>2</sup> Wires                                    |

| Contact Removal Tools   |               |   |
|---|---------------|---|
| Part  | Part Number   | Description                                 |
|  | AT11-027-0405 | Contact Removal Tool, Plastic, Size 4, 4AWG |