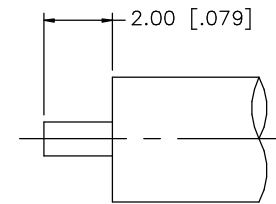
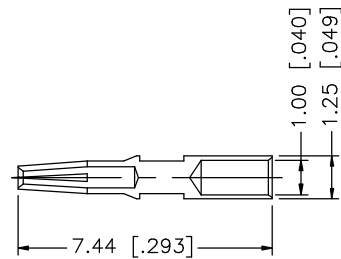
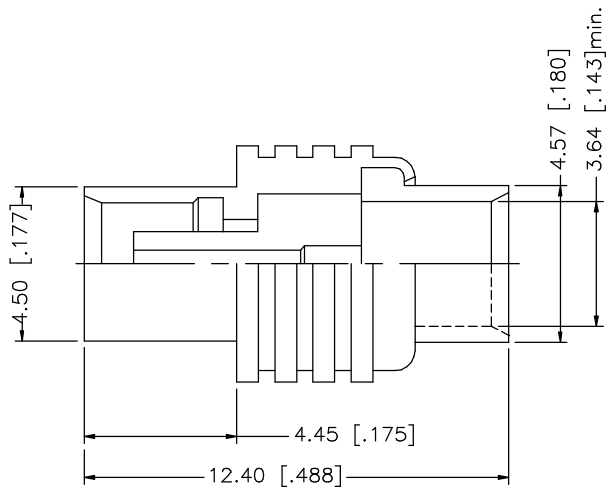


REV.	DATE	DESCRIPTION
NC	06/10/03	INITIAL RELEASE



RECOMMENDED CABLE STRIPPING DIMENSIONS

NOTE:
1. CONTACT PIN TO SOLDER

				UNLESS OTHERWISE SPECIFIED DIMENSIONS ARE IN MILLIMETERS. DIMENSIONS IN [] ARE IN INCHES AND FOR CUSTOMER REFERENCE ONLY.	APPROVALS	DATE	<h1 style="color: blue;">Amphenol Connex</h1>										
8					DRAWN	G.R.S.					06/10/03	PART DESCRIPTION MCX DIRECT SOLDER JACK (.141" SEMI RIGID CABLE)					
7					CHECKED			PART NO. 252184									
6					ISSUED							DWG. NO. 252184.DWG <table style="float: right; margin-left: 20px;"> <tr> <td>REV.</td> <td>NC</td> <td>SIZE</td> <td>A</td> <td>SCALE</td> <td>NA</td> </tr> </table>				REV.	NC
REV.	NC	SIZE	A	SCALE	NA												
5					SHEET	1 OF 1		CAD FILE C:/252/252184.DWG									
4												DO NOT SCALE DRAWING					
3	CONTACT PIN	BER. COPPER	GOLD	1	UNLESS OTHERWISE SPECIFIED TOLERANCES FOR MILLIMETERS ARE: 0.5 - 8mm ± 0.20mm 8 - 30mm ± 0.40mm 30 - 120mm ± 0.50mm UNLESS OTHERWISE SPECIFIED TOLERANCES FOR INCHES ARE: .020 - .315 = ± 0.007" .315 - 1.180 = ± 0.015" 1.180 - 4.724 = ± 0.020"				DESCRIPTION								
2	INSULATOR	TEFLON	NATURAL	1									MATERIAL				
1	BODY	BRASS	GOLD	1													FINISH
					QTY												
									DO NOT SCALE DRAWING								