

DRAWING MADE IN THIRD ANGLE PROJECTION

3

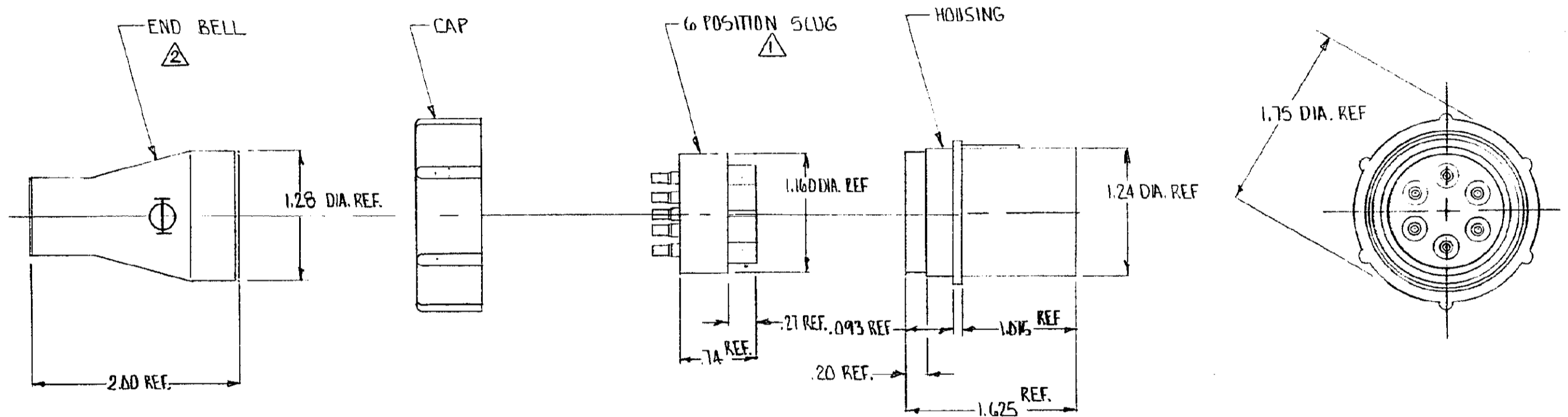
2

1

LOC DF SO

THIS DRAWING IS UNPUBLISHED. RELEASED FOR PUBLICATION, 19
 © COPYRIGHT 19 BY AMP INCORPORATED, HARRISBURG, PA. ALL INTERNATIONAL RIGHTS RESERVED. AMP PRODUCTS MAY BE COVERED BY U.S. AND FOREIGN PATENTS AND/OR PATENTS PENDING.

REVISIONS					
P	F	ZONE	LTR	DESCRIPTION	DATE APPROVED
	✓			O RELEASED WAFS SK-02881-1	KN 2/11/83 M.B.
	✓			A REV PER ECN DF-6429	JA 2/12/83 JH



- ⚠ 6 POSITION SLUG TO BE WIRED, THEN INSERTED & BONDED TO HOUSING BY CUSTOMER USING A SUITABLE SILICONE ADHESIVE.
- ⚠ END BELL TO BE MOUNTED TO HOUSING BY CUSTOMER USING EPOXY ADHESIVE & ENCAPSULATE BACK END OF CONNECTOR USING COMPOUND SUITABLE FOR VOLTAGE APPLICATION.

867624-1 AS SHOWN

UNLESS OTHERWISE SPECIFIED DIMENSIONS ARE IN INCHES. TOLERANCES ON: DECIMALS .XX ±.03, .XXX ±.015 ANGLES ±		CONTRACT NO		AMP INCORPORATED Harrisburg, Pa. 17105	
MATERIAL	FINISH	DR <i>B.S. Nov 1/17/83</i>	CHK	NAME 6 POSITION PLUG KIT	
		APPD <i>M. Gaudin 1/17/83</i>	APPD	LGH	
		DSGN APPD	OTHER APPD	SIZE C	FSCM NO 00779
				DRAWING NO 867624	
				SCALE ~	SHEET 10F1 REV. 0

CUSTOMER DRAWING