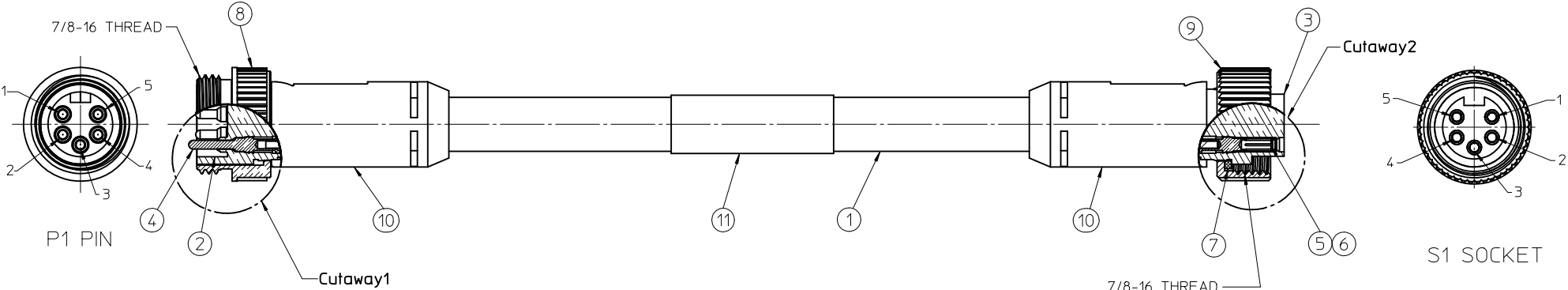
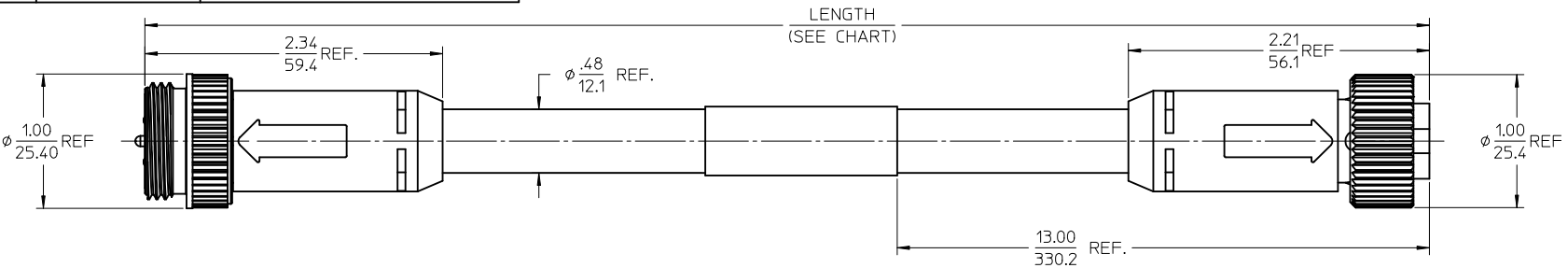
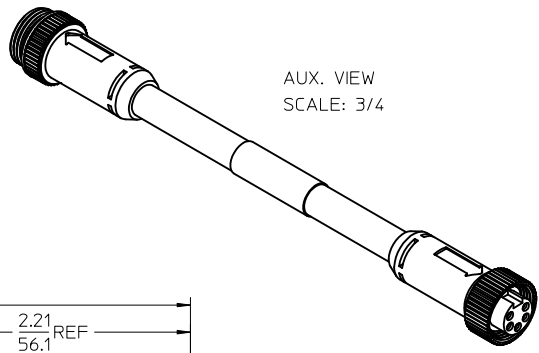


PART NUMBER	ENGINEERING NO.	LENGTH
848561200	84856-1200	.5M +44.5mm -0 [1.64' + 1.75' -0]
848561201	84856-1201	1M +55.6mm -0 [3.28' +2.19' -0]
848561202	84856-1202	2M +88.9mm -0 [6.56' +3.50' -0]
848561203	84856-1203	3M +88.9mm -0 [9.84' +3.50' -0]
848561204	84856-1204	4M +165.1mm -0 [13.12' +6.50' -0]
848561205	84856-1205	5M +165.1mm -0 [16.40' +6.50' -0]
848561206	84856-1206	6M +165.1mm -0 [19.69' +6.50' -0]
848561207	84856-1207	7M +165.1mm -0 [22.97' +6.50' -0]
848561208	84856-1208	8M +317.5mm -0 [26.25' +12.50' -0]
848561209	84856-1209	9M +317.5mm -0 [29.53' +12.50' -0]
848561210	84856-1210	10M +317.5mm -0 [32.81' +12.50' -0]



- NOTES:
1. MATERIAL: SEE TABLE
  2. FINISHES: SEE TABLE
  3. CABLE ASSEMBLIES ARE BAGGED SEPARATELY IN POLY BAGS WITH BARCODE LABEL ATTACHED TO OUTSIDE OF BAG
  4. WRAP LABEL IS MARKED WITH P/N, DATE CODE VOLTAGE & AMPERAGE
  5. MATES WITH: MINI CHANGE, A-SIZE 5 POLE
  6. ELECTRICAL SPECIFICATIONS:  
VOLTAGE RATING: 300V  
CURRENT RATING: 4 AMPS
  7. ASSEMBLY IS RoHS COMPLIANT

P1		S2	
1	DRAIN	1	
2	RED	2	
3	BLACK	3	
4	WHITE	4	
5	BLUE	5	

WIRING DIAGRAM

ITEM	QTY.	DESCRIPTION	MATERIAL	FINISH
11	1	LABEL	PLASTIC FILM	BLACK/YELLOW
10	2	OVERMOLD	PVC	GRAY
9	1	COUPLING NUT, FEMALE THREAD	BRASS	NICKEL PLATED
8	1	COUPLING NUT, MALE THREAD	BRASS	NICKEL PLATED
7	1	FRICTION RING	NYLON	WHITE
6	5	CONTACT SOCKET	BRASS	GOLD PLATED
5	5	SOCKET SLEEVE	ST. STEEL	
4	5	CONTACT PIN	BRASS	GOLD PLATED
3	1	INSERT, FEMALE, 5 POLE	PVC	GRAY
2	1	INSERT, MALE, 5 POLE	PVC	GRAY
1	1	CABLE - THICK-STD. DEV-NET. TRUNK, 15/18	PVC JACKET	GRAY

<b>RELEASED</b> EC NO: MNA2010-0686 DRWN:WOODMAN 2010/05/13 CHKD:VOU 2010/05/14 APPR:JFMURPHY 2010/05/19	QUALITY SYMBOLS ▽=0 ▽=0	GENERAL TOLERANCES (UNLESS SPECIFIED)		DIMENSION STYLE <b>IN/MM</b>		SCALE <b>1.5:1</b>	DESIGN UNITS <b>INCH</b>	THIRD ANGLE PROJECTION		
		4 PLACES ± --- ± --- 3 PLACES ± --- ± --- 2 PLACES ± --- ± .01 1 PLACE ± 0.3 ± ---	mm INCH	DRAWN BY R.STONE	DATE 2010/01/06	TITLE <b>MINI-CHANGE 5 POLE M/F, DEVICE NET, TRUNK</b>				
		ANGULAR ±1/2°		CHECKED BY B.WOODMAN	DATE 2010/01/15	APPROVED BY JFMURPHY		DATE 2010/01/22	<b>MOLEX INCORPORATED</b>	
		DRAFT WHERE APPLICABLE MUST REMAIN WITHIN DIMENSIONS		MATERIAL NO. <b>SEE CHART</b>		DOCUMENT NO. <b>SD-84856-007</b>	SHEET NO. <b>1 OF 1</b>			

THIS DRAWING CONTAINS INFORMATION THAT IS PROPRIETARY TO MOLEX INCORPORATED AND SHOULD NOT BE USED WITHOUT WRITTEN PERMISSION