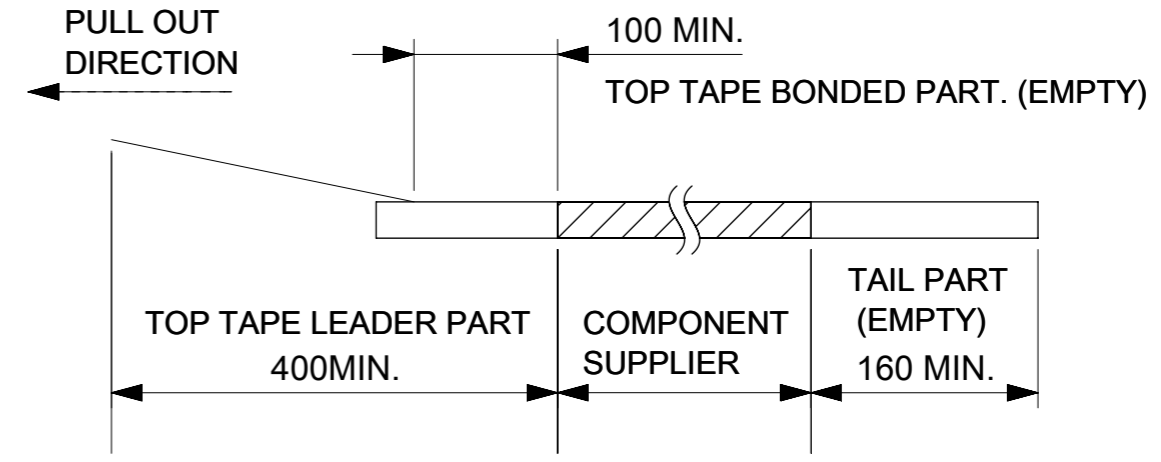
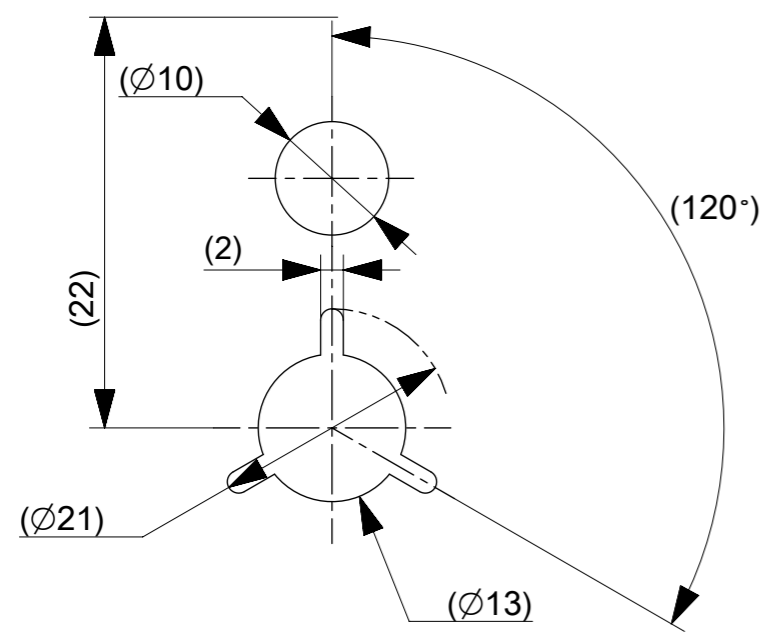


NOTES

- 1. RE DETAILED DIMENSION, SEE PRODUCT DRAWING.
- 2. NUMBER OF CONNECTORS : 20000PCS/REEL
- 3. LEAD TAPE LENGTH.

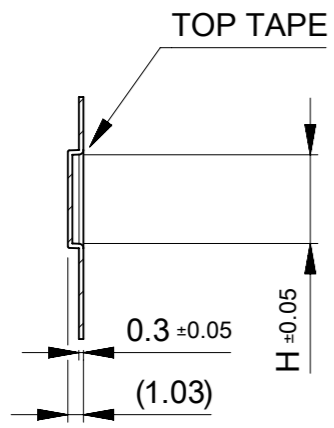


- 4. PEELING OFF FORCE OF THE TOP TAPE IS DEFINED BY IEC60286-3.
- 5. MATERIAL  
CARRIER TAPE : POLYSTYRENE OR PET  
TOP TAPE : PET , OTHER  
REEL : POLYSTYRENE (PS) < RECYCLE MATERIAL CONTAINED >
- 6. ELV AND RoHS COMPLIANT
- △7 CONFORM TO 2033899200-SPK\_PS200 FOR PACKAGING SPECIFICATION.
- △8 CONFORM TO 2033899200-SPK\_PS201 FOR PACKAGING SPECIFICATION.

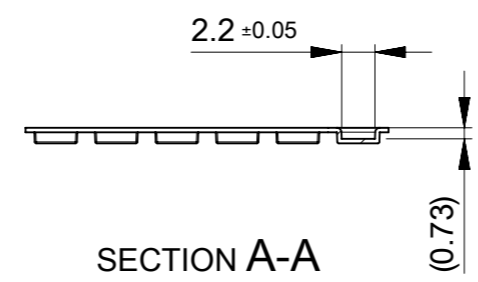
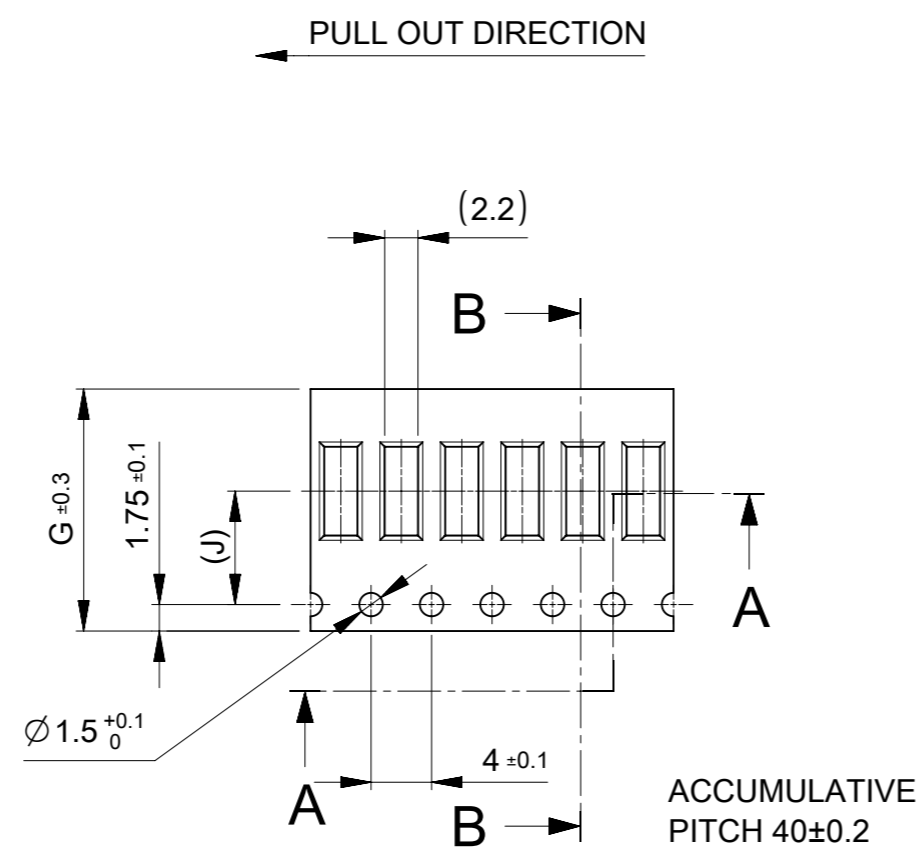


DETAIL "D"

THIS DRAWING CONTAINS INFORMATION THAT IS PROPRIETARY TO MOLEX ELECTRONIC TECHNOLOGIES, LLC AND SHOULD NOT BE USED WITHOUT WRITTEN PERMISSION													
DIMENSION UNITS		SCALE		CURRENT REV DESC:				<b>molex</b>					
mm		1:1											
GENERAL TOLERANCES (UNLESS SPECIFIED)				EC NO: 725424 DRWN: AISHII 2022/10/20 CHK'D: YKOBAYASHI02 2022/10/20 APPR: KSASAKI 2022/10/21 INITIAL REVISION: DRWN: DGONDO 2020/06/25 APPR: YKOBAYASHI02 2020/07/07				0.175BB H=0.6 QUADROW REC EMBS PACKAGE					
ANGULAR TOL ± 3.0 °								PRODUCT CUSTOMER DRAWING					
4 PLACES ± 0.03		3 PLACES ± 0.03						DOCUMENT NUMBER		DOC TYPE		DOC PART	
2 PLACES ± 0.05		1 PLACE ± 0.1						2033890000-SD		PSD		000	
0 PLACES ± 0.2		DRAFT WHERE APPLICABLE MUST REMAIN WITHIN DIMENSIONS						SERIES		MATERIAL NUMBER		CUSTOMER	
		THIRD ANGLE PROJECTION						A3-SIZE		203389		SEE CHART	
						GENERAL		1 OF 2					



SECTION B-B

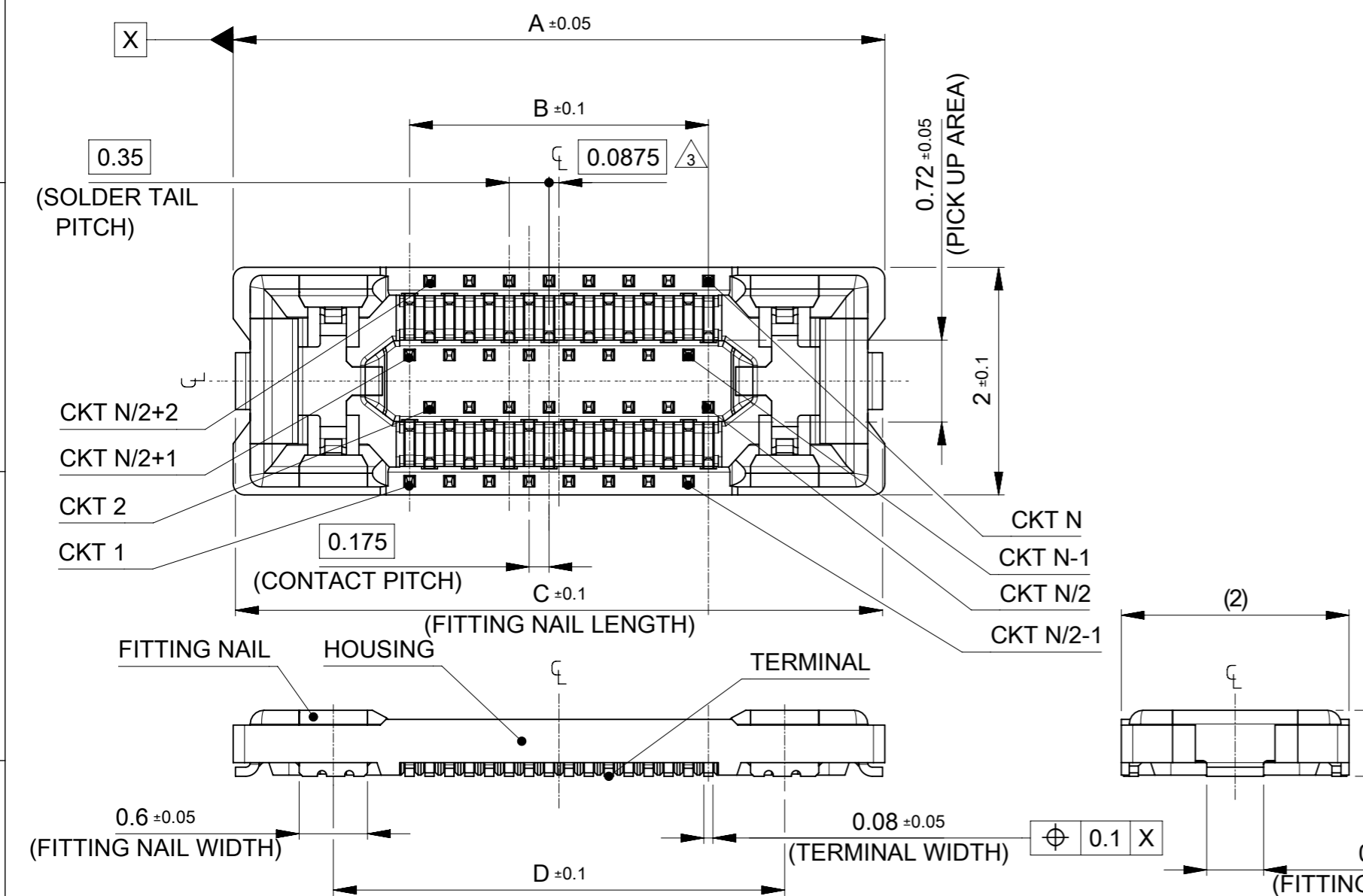


SECTION A-A

7.5	6.215	16	21.4	17.4	2033890363	2033890361	36
7.5	5.865	16	21.4	17.4	2033890323	2033890321	32
J	H	G	F	E	ORDER NO.	ORDER NO.	CIRCUIT
					PACKAGING SPEC: $\triangle_8$	PACKAGING SPEC: $\triangle_7$	

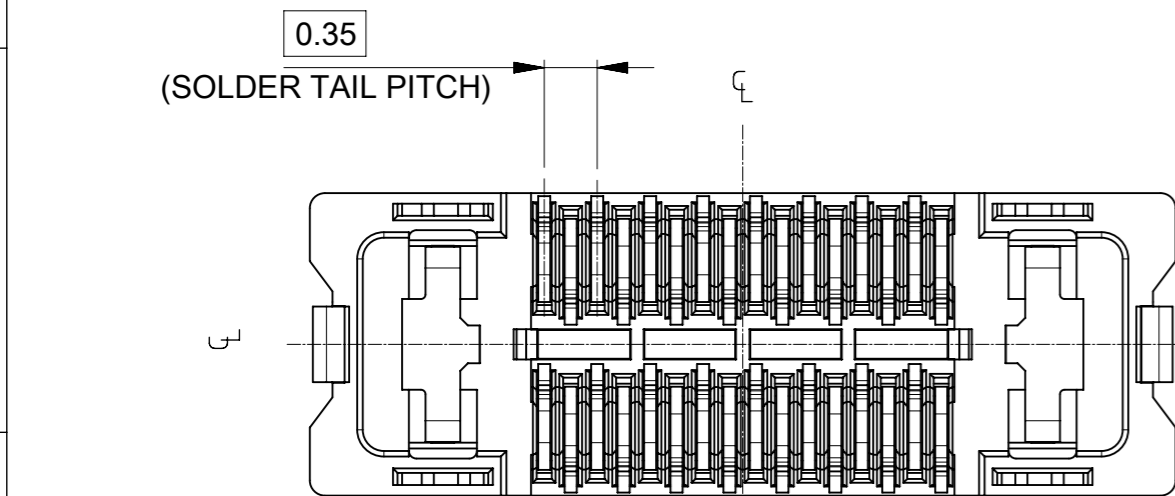
CONNECTOR SERIES No. 2033890\*\*\*

THIS DRAWING CONTAINS INFORMATION THAT IS PROPRIETARY TO MOLEX ELECTRONIC TECHNOLOGIES, LLC AND SHOULD NOT BE USED WITHOUT WRITTEN PERMISSION		CURRENT REV DESC:		<b>molex</b>	
DIMENSION UNITS	SCALE	EC NO: 725424			
mm	2:1	DRWN: AISHII 2022/10/20		0.175BB H=0.6 QUADROW REC EMBS PACKAGE	
GENERAL TOLERANCES (UNLESS SPECIFIED)		CHK'D: YKOBAYASHI02 2022/10/20		PRODUCT CUSTOMER DRAWING	
ANGULAR TOL	± 3.0 °	APPR: KSASAKI 2022/10/21		DOCUMENT NUMBER	
4 PLACES	± 0.03	INITIAL REVISION:		2033890000-SD	
3 PLACES	± 0.03	DRWN: DGONDO 2020/06/25		DOC TYPE	DOC PART
2 PLACES	± 0.05	APPR: YKOBAYASHI02 2020/07/07		PSD	000
1 PLACE	± 0.1	MATERIAL NUMBER		CUSTOMER	REVISION
0 PLACES	± 0.2	SEE CHART		GENERAL	E
DRAFT WHERE APPLICABLE MUST REMAIN WITHIN DIMENSIONS		THIRD ANGLE PROJECTION	DRAWING	SERIES	SHEET NUMBER
			A3-SIZE	203389	2 OF 2



NOTES

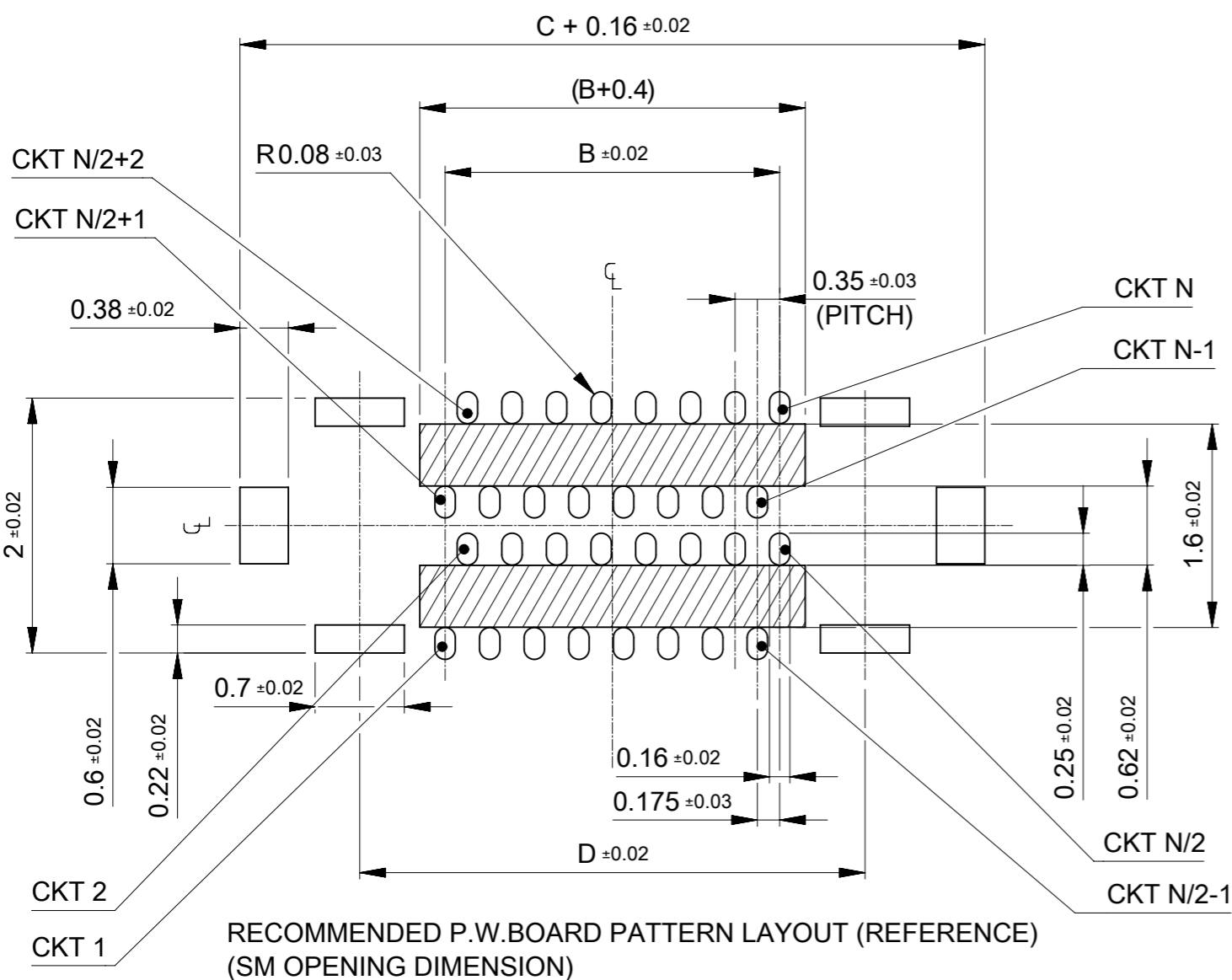
- MATERIAL  
HOUSING : LIQUID CRYSTAL POLYMER UL94V-0(COLOR : BLACK)  
TERMINAL : COPPER ALLOY  
FITTING NAIL : COPPER ALLOY
  - PLATING  
TERMINAL  
CONTACT AREA : GOLD 0.1 μm MIN.  
TAIL AREA : GOLD 0.05 μm MIN.  
UNDER PLATING : NICKEL 1.0 μm MIN.  
\*DIVIDE INTO PARTS THE GOLD PLATING OF CONTACT AND THE TAIL PART BY THE NICKEL PLATING.  
\*EITHER GOLD OR NICKEL PLATING IS ACCEPTABLE IN THE AREA WHICH IS NOT SPECIFIED AS CONTACT , TAIL OR NICKEL BARRIER.  
FITTING NAIL  
CONTACT AREA : GOLD 0.1 μm MIN.  
TAIL AREA : GOLD 0.05 μm MIN.  
UNDER PLATING : NICKEL 1.0 μm MIN.  
\*DIVIDE INTO PARTS THE GOLD PLATING OF CONTACT AND THE TAIL PART BY THE NICKEL PLATING.  
\*EITHER GOLD OR NICKEL PLATING IS ACCEPTABLE IN THE AREA WHICH IS NOT SPECIFIED AS CONTACT , TAIL OR NICKEL BARRIER.
- △3 APPLY FOR (CIRCUIT/4)=EVEN  
4. MATE WITH : 2033900\*\*1, 2033900\*\*3  
5. TAIL AND FITTING NAIL COPLANARITY TO BE 0.08mm MAXIMUM.  
△6 CONFORM TO 2033899200-SPK\_PS200 FOR PACKAGING SPECIFICATION.  
△7 CONFORM TO 2033899200-SPK\_PS201 FOR PACKAGING SPECIFICATION.



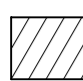
4.315	6.035	2.975	6.075	2033890363	2033890361	36
3.965	5.685	2.625	5.725	2033890323	2033890321	32
D	C	B	A	EMBOSSED TAPE PACKAGE	EMBOSSED TAPE PACKAGE	CIRCUIT
				ORDER No.	ORDER No.	
				PACKAGING SPEC: △7	PACKAGING SPEC: △6	

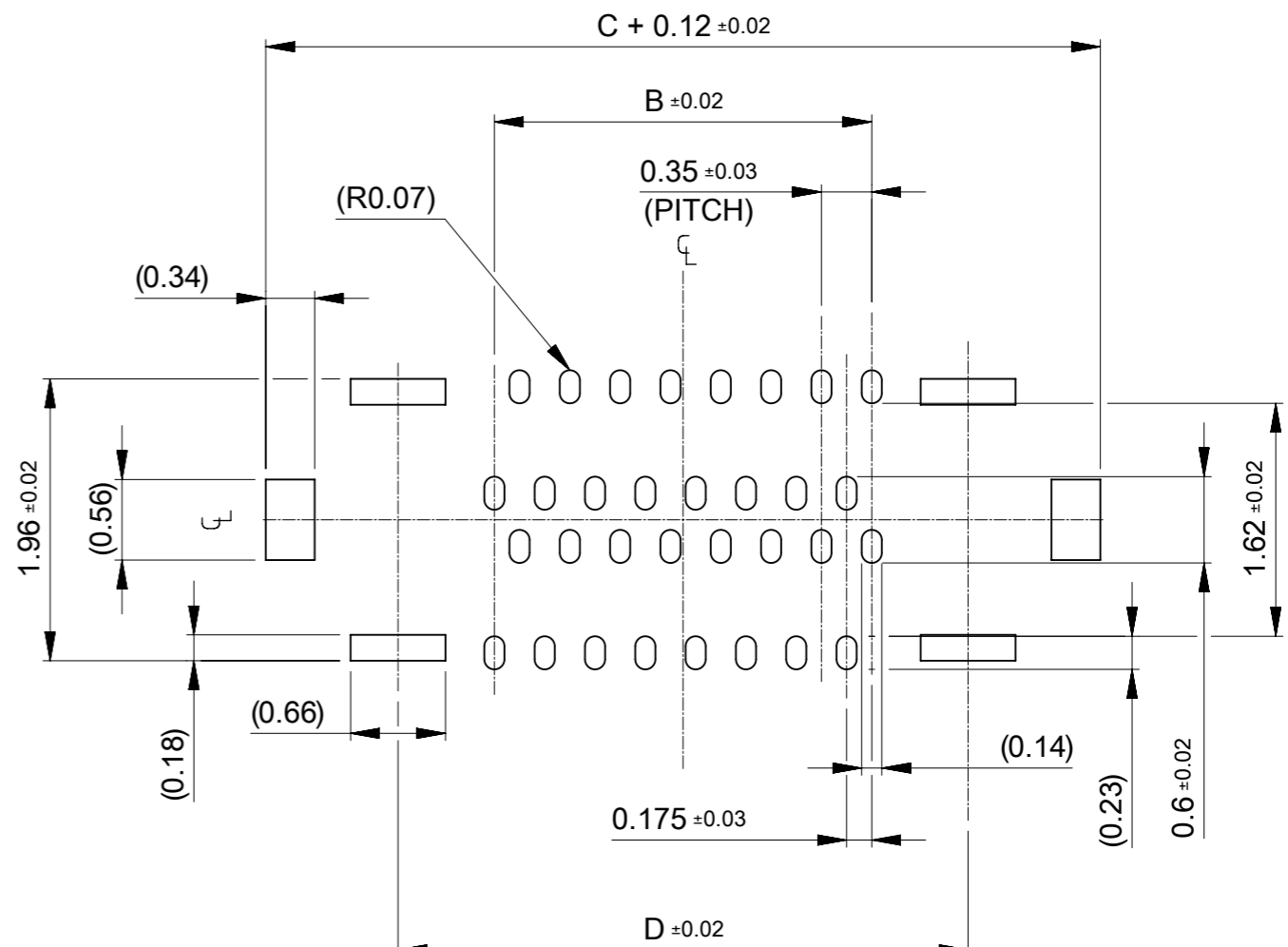
CONNECTOR SERIES No. : 2033891\*\*1

THIS DRAWING CONTAINS INFORMATION THAT IS PROPRIETARY TO MOLEX ELECTRONIC TECHNOLOGIES, LLC AND SHOULD NOT BE USED WITHOUT WRITTEN PERMISSION		CURRENT REV DESC:		<b>molex</b>		
DIMENSION UNITS	SCALE	EC NO: 725424				
mm	20:1	DRWN: AISHII 2022/10/20		PRODUCT CUSTOMER DRAWING		
GENERAL TOLERANCES (UNLESS SPECIFIED)		CHK'D: YKOBAYASHI02 2022/10/20		DOCUMENT NUMBER		
ANGULAR TOL ± 3.0°		APPR: KSASAKI 2022/10/21		2033891000-SD		DOC TYPE
4 PLACES	± 0.03	INITIAL REVISION:		PSD	000	REVISION
3 PLACES	± 0.03	DRWN: DGONDO 2020/06/25		E		
2 PLACES	± 0.05	APPR: YKOBAYASHI02 2020/07/07		SHEET NUMBER		
1 PLACE	± 0.1	THIRD ANGLE PROJECTION		1 OF 2		
0 PLACES	± 0.2	DRAWING		SERIES		
DRAFT WHERE APPLICABLE MUST REMAIN WITHIN DIMENSIONS		A3-SIZE		MATERIAL NUMBER		
		203389		CUSTOMER		
				SEE CHART		
				GENERAL		



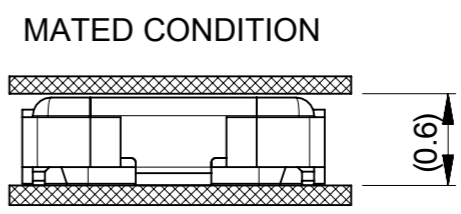
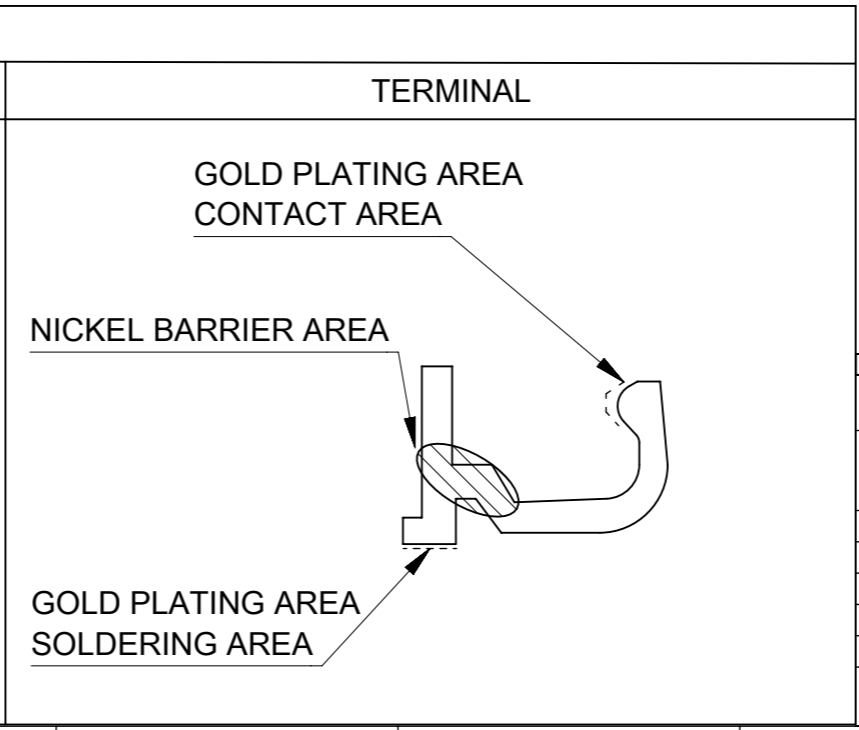
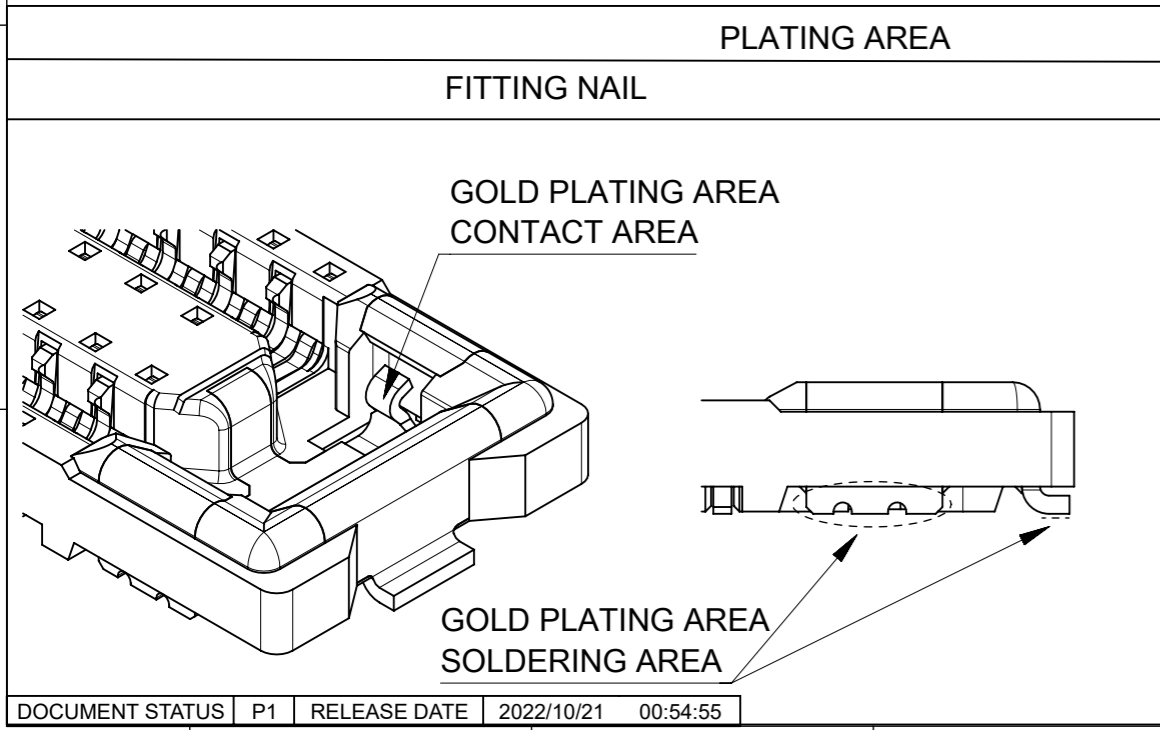
RECOMMENDED P.W. BOARD PATTERN LAYOUT (REFERENCE)  
(SM OPENING DIMENSION)

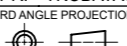
 SOLDERING PROHIBITED AREA  
WHEN WIRING IS LOCATED,  
THE WIRING MUST BE MASKED BY COVER LAY OR RESIST FILM.



RECOMMENDED METAL MASK LAYOUT (REFERENCE)

RECOMMENDED THICKNESS OF METAL MASK : t=0.08mm  
RECOMMENDED OPEN APERTURE RATIO OF METAL MASK : 80%



THIS DRAWING CONTAINS INFORMATION THAT IS PROPRIETARY TO MOLEX ELECTRONIC TECHNOLOGIES, LLC AND SHOULD NOT BE USED WITHOUT WRITTEN PERMISSION		CURRENT REV DESC:		<b>molex</b>		
DIMENSION UNITS	SCALE					
mm	20:1			0.175 BB H=0.6 QUAD ROW REC ASSY		
GENERAL TOLERANCES (UNLESS SPECIFIED)		EC NO: 725424		PRODUCT CUSTOMER DRAWING		
ANGULAR TOL	± 3.0 °	DRWN: AISHII 2022/10/20		DOCUMENT NUMBER		
4 PLACES	± 0.03	CHK'D: YKOBAYASHI02 2022/10/20		DOC TYPE		
3 PLACES	± 0.03	APPR: KSASAKI 2022/10/21		DOC PART		
2 PLACES	± 0.05	INITIAL REVISION:		REVISION		
1 PLACE	± 0.1	DRWN: DGONDO 2020/06/25		2033891000-SD		
0 PLACES	± 0.2	APPR: YKOBAYASHI02 2020/07/07		PSD 000 E		
DRAFT WHERE APPLICABLE MUST REMAIN WITHIN DIMENSIONS		THIRD ANGLE PROJECTION	DRAWING	SERIES	MATERIAL NUMBER	CUSTOMER
			A3-SIZE	203389	SEE CHART	GENERAL
				SHEET NUMBER		
				2 OF 2		

DOCUMENT STATUS	P1	RELEASE DATE	2022/10/21	00:54:55
-----------------	----	--------------	------------	----------