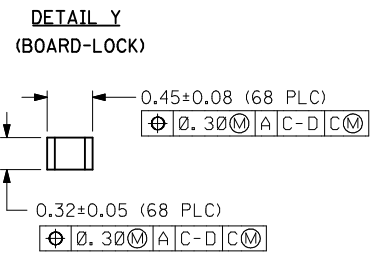
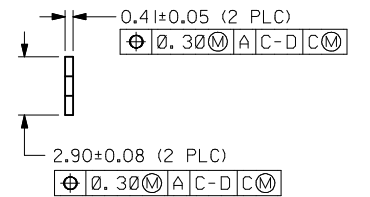
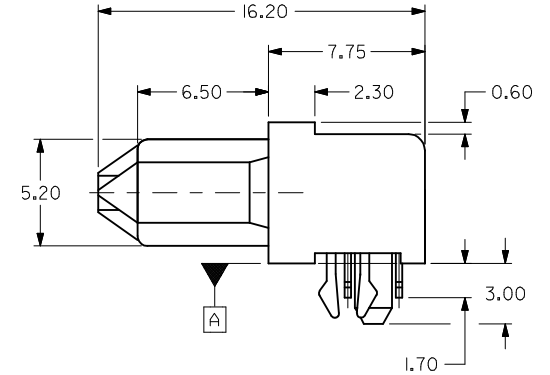
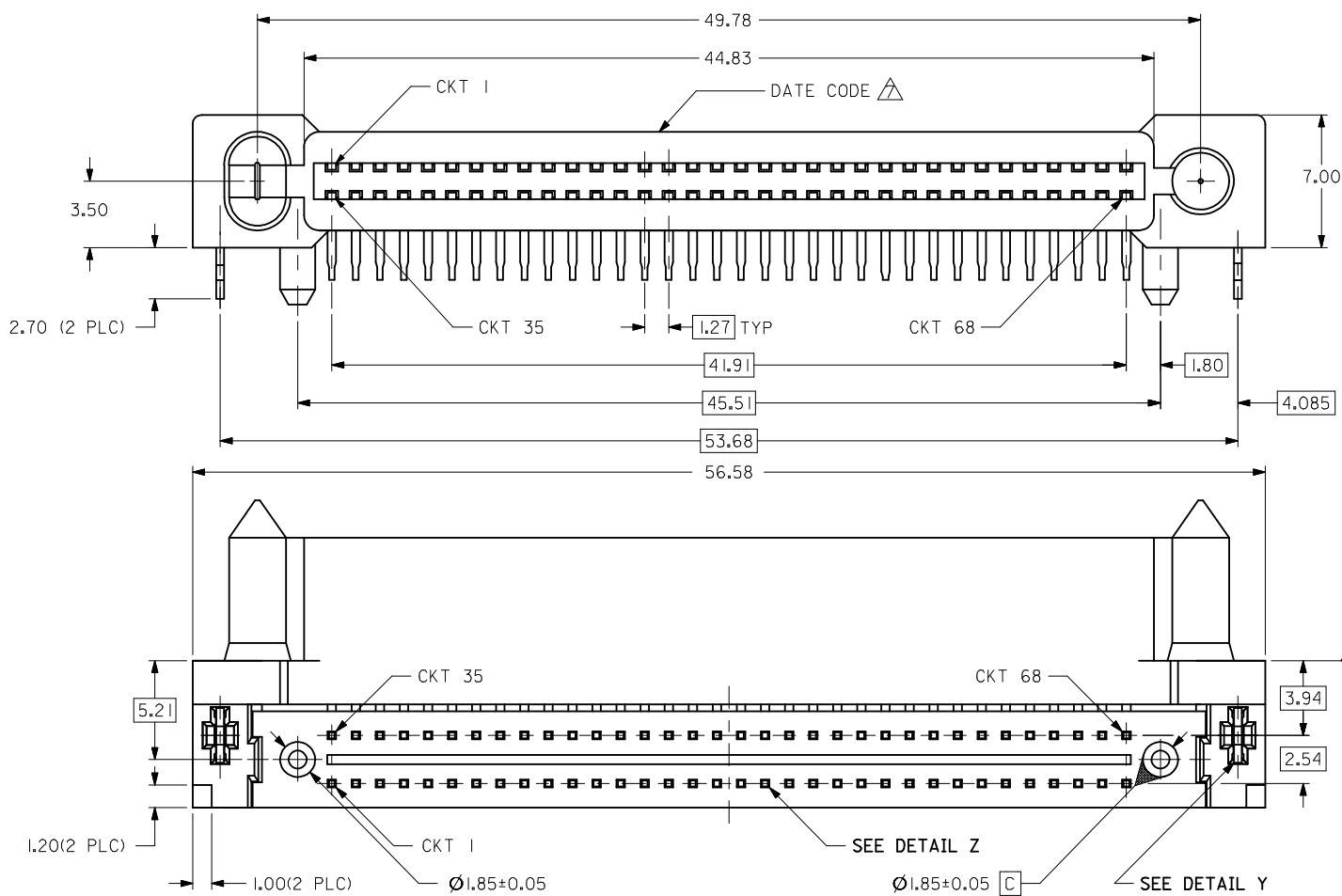
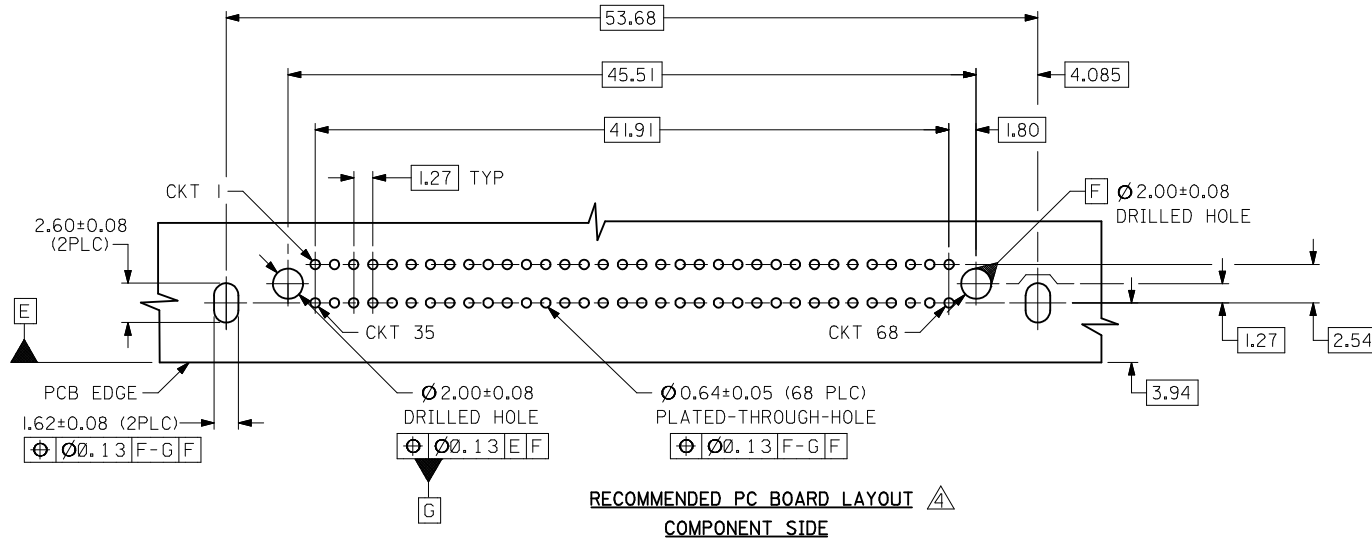


10	9	8	7	6	5	4	3	2	1
PART NO. (PACKED IN CARTON)		CKT SIZE	CONTACTS LUBRICATION						
87537-8872		68	NIL						
87537-8873 $\Delta$		68	YES						



5.21	3.94	2.54	1.20 (2 PLC)	1.00 (2 PLC)	$\varnothing 1.85 \pm 0.05$	$\varnothing 0.30$
5.21	3.94	2.54	1.20 (2 PLC)	1.00 (2 PLC)	$\varnothing 1.85 \pm 0.05$	$\varnothing 0.30$

OBS TIN/LEAD P/N EC NO: S2006-0729 DRWING: MLONG CHKD: SHONG APPR: KCLING	2006/02/27 2006/02/27 2006/02/28	DESCRIPTION	QUALITY SYMBOLS	GENERAL TOLERANCES (UNLESS SPECIFIED)		DIMENSION STYLE		SCALE	DESIGN UNITS	THIRD ANGLE PROJECTION			
			$\nabla = 0$	mm	INCH	MM ONLY	NTS	METRIC					
			$\nabla = 0$	4 PLACES	± ---	± ---	DRAWN BY	DATE	TITLE				
				3 PLACES	± ---	± ---	KSEE	2002/12/12	EBBI, RECEPTACLE, CONN. 1.27MM CTR, 68 CKTS, BTB B/MATE, 3.50MM HT., R/A				
	2 PLACES	± 0.25	± ---	CHECKED BY	DATE	MOLEX INCORPORATED							
	1 PLACE	± ---	± ---	KCLING	2003/01/08	MATERIAL NO. DOCUMENT NO.							
				APPROVED BY	DATE	SD-87537-022							
				SKTOH	2003/01/09	SHEET NO.							
						1 OF 2							
						DRAFT WHERE APPLICABLE MUST REMAIN WITHIN DIMENSIONS							
						SEE TABLE							
						THIS DRAWING CONTAINS INFORMATION THAT IS PROPRIETARY TO MOLEX INCORPORATED AND SHOULD NOT BE USED WITHOUT WRITTEN PERMISSION							

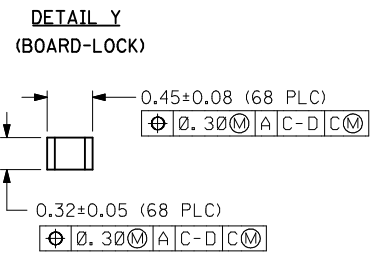
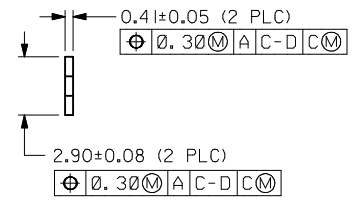
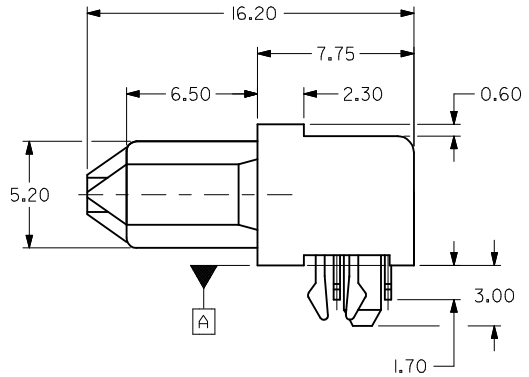
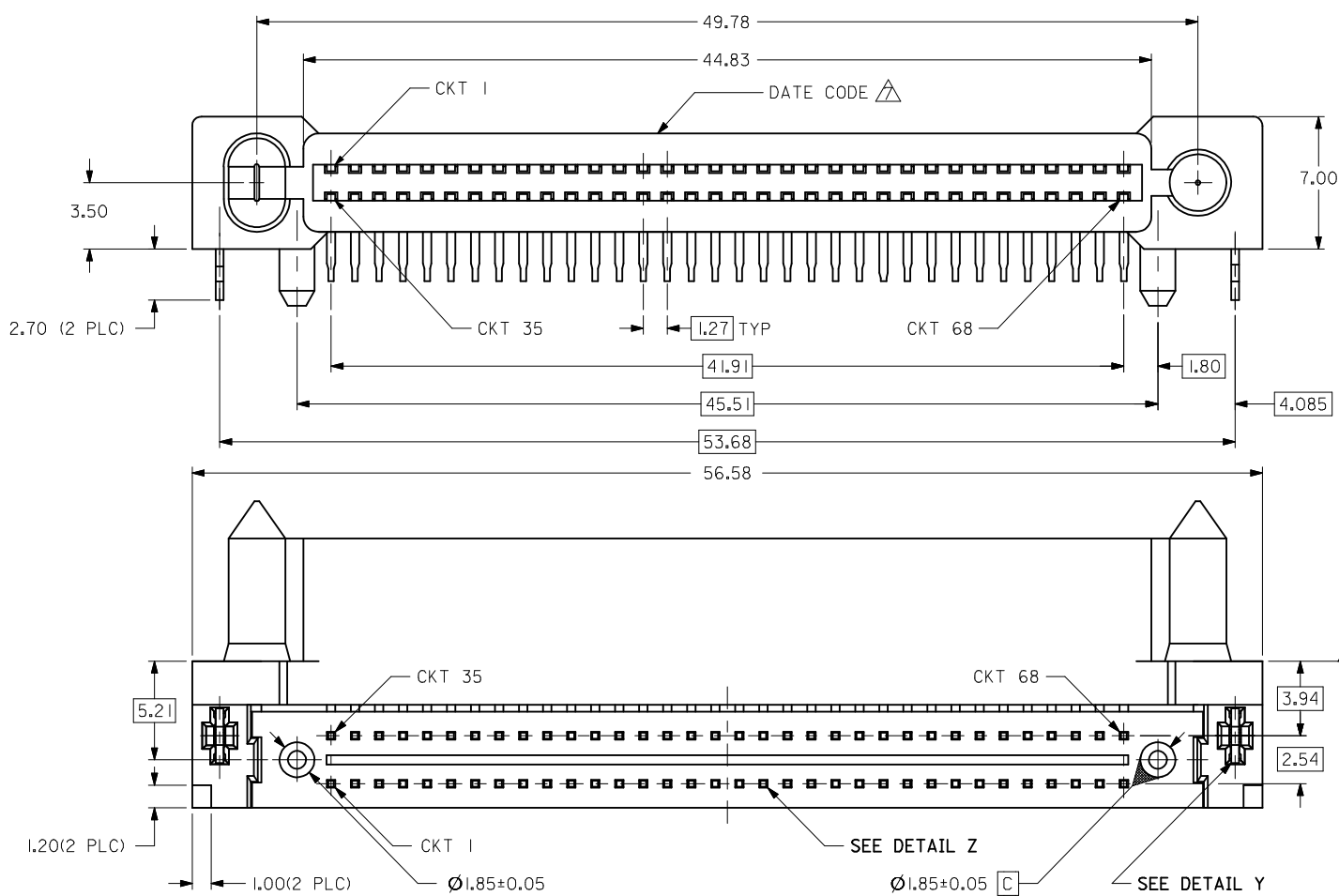


NOTES:

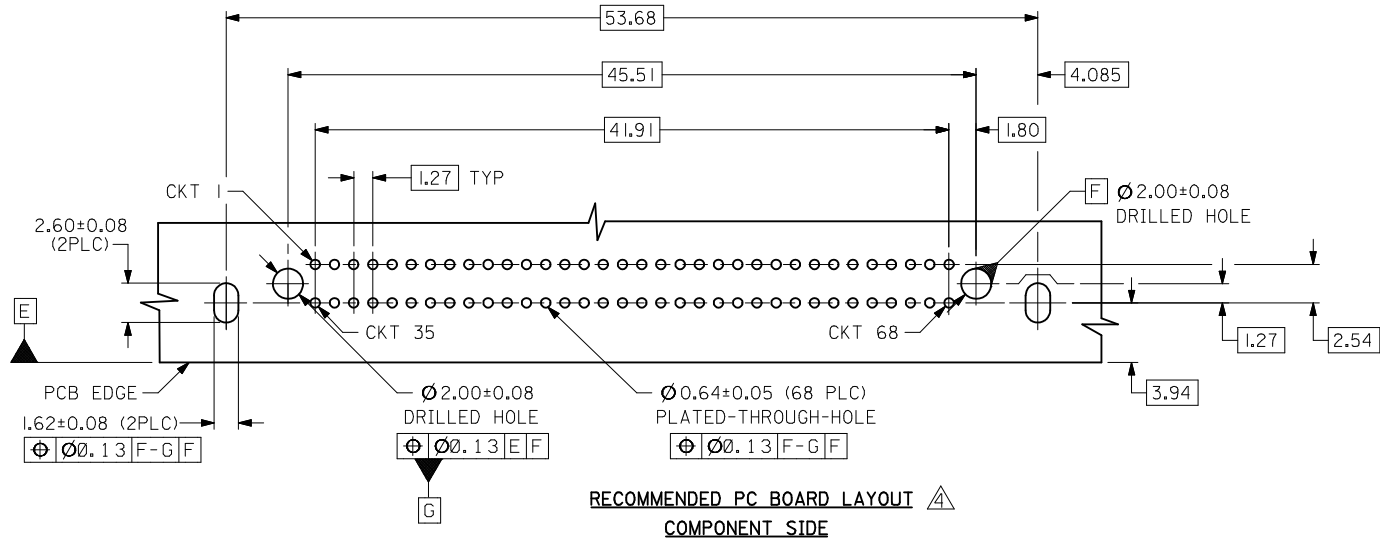
- 1 MATERIALS:  
HOUSING - HIGH TEMPERATURE THERMOPLASTIC, GLASS FILLED,  
UL94V-0, COLOR : BLACK  
TERMINAL - COPPER ALLOY
- 2 PLATING:  
0.76µM MIN. GOLD IN SELECTIVE CONTACT AREA AND  
2.54µM MIN. TIN IN SOLDER TAIL AREA, BOTH  
OVER 1.27µM MIN. NICKEL.
- 3. PRODUCT SPECIFICATION : PS-87537-0001
- △ RECOMMENDED P.C. BOARD THICKNESS IS 1.40+/-0.05MM.
- 5 CIRCUIT #58 TO BE RECESSED 0.50mm BEHIND  
ALL OTHER CONTACTS.
- △ PART IS LUBRICATED AT TERMINAL CONTACTS TO MINIMISE  
UNMATE FORCE.
- △ DATE CODE SHALL BE LASER PRINTED ON HOUSING SURFACE  
AS YYDDD(YY-YEAR, DDD-DAYS) AND LOCATED APPROXIMATELY  
AS SHOWN.

OBS TIN/LEAD P/N EC NO: S2006-0729 DRWN:MLONG 2006/02/27 CHKD:SHONG 2006/02/27 APPR:KCLING 2006/02/28	QUALITY SYMBOLS ▽=0 ▽=0	GENERAL TOLERANCES (UNLESS SPECIFIED)		DIMENSION STYLE MM ONLY		SCALE NTS	DESIGN UNITS METRIC	THIRD ANGLE PROJECTION		
			mm	INCH	DRAWN BY KSEE	DATE 2002/12/12	TITLE EBBI, RECEPTACLE, CONN. 1.27MM CTR, 68 CKTS, BTB B/MATE, 3.50MM HT., R/A			
		4 PLACES	± ---	± ---	CHECKED BY KCLING	DATE 2003/01/08	MOLEX INCORPORATED DOCUMENT NO. SD-87537-022 SHEET NO. 2 OF 2			
		3 PLACES	± ---	± ---	APPROVED BY SKTOH	DATE 2003/01/09				
2 PLACES	± 0.25	± ---	ANGULAR ± 3 °		MATERIAL NO. SEE TABLE		THIS DRAWING CONTAINS INFORMATION THAT IS PROPRIETARY TO MOLEX INCORPORATED AND SHOULD NOT BE USED WITHOUT WRITTEN PERMISSION			
1 PLACE	± ---	± ---	DRAFT WHERE APPLICABLE MUST REMAIN WITHIN DIMENSIONS		SIZE A3					

10	9	8	7	6	5	4	3	2	1
PART NO. (PACKED IN CARTON)		CKT SIZE	CONTACTS LUBRICATION						
87537-8872		68	NIL						
87537-8873 $\triangle$		68	YES						



OBS EC NO: S2006-0729 DRW:MLONG CHKD:SHONG APPR:KCLING	TIN/LEAD P/N 2006/02/27 2006/02/27 2006/02/28	DESCRIPTION	QUALITY SYMBOLS	GENERAL TOLERANCES (UNLESS SPECIFIED)		DIMENSION STYLE		SCALE	DESIGN UNITS	THIRD ANGLE PROJECTION			
			$\nabla=0$	mm	INCH	MM ONLY	NTS	METRIC					
			$\triangleleft=0$	4 PLACES	± ---	± ---	DRAWN BY	DATE	TITLE				
				3 PLACES	± ---	± ---	CHECKED BY	DATE	EBBI, RECEPTACLE, CONN. 1.27MM CTR, 68 CKTS, BTB B/MATE, 3.50MM HT., R/A				
	2 PLACES	± 0.25	± ---	APPROVED BY	DATE	MOLEX INCORPORATED							
	1 PLACE	± ---	± ---	SKTOH	2003/01/09	MATERIAL NO. DOCUMENT NO. SHEET NO.							
	ANGULAR ± 3 °		DRAFT WHERE APPLICABLE MUST REMAIN WITHIN DIMENSIONS		SEE TABLE		SD-87537-022		1 OF 2				
	THIS DRAWING CONTAINS INFORMATION THAT IS PROPRIETARY TO MOLEX INCORPORATED AND SHOULD NOT BE USED WITHOUT WRITTEN PERMISSION												



NOTES:

- 1 MATERIALS:  
HOUSING - HIGH TEMPERATURE THERMOPLASTIC, GLASS FILLED,  
UL94V-0, COLOR : BLACK  
TERMINAL - COPPER ALLOY
- 2 PLATING:  
0.76µM MIN. GOLD IN SELECTIVE CONTACT AREA AND  
2.54µM MIN. TIN IN SOLDER TAIL AREA, BOTH  
OVER 1.27µM MIN. NICKEL.
3. PRODUCT SPECIFICATION : PS-87537-0001
- △ RECOMMENDED P.C. BOARD THICKNESS IS 1.40+/-0.05MM.
- 5 CIRCUIT #58 TO BE RECESSED 0.50mm BEHIND  
ALL OTHER CONTACTS.
- △ PART IS LUBRICATED AT TERMINAL CONTACTS TO MINIMISE  
UNMATE FORCE.
- △ DATE CODE SHALL BE LASER PRINTED ON HOUSING SURFACE  
AS YYDDD(YY-YEAR, DDD-DAYS) AND LOCATED APPROXIMATELY  
AS SHOWN.

OBS TIN/LEAD P/N EC NO: S2006-0729 DRWN:MLONG 2006/02/27 CHKD:SHONG 2006/02/27 APPR:KCLING 2006/02/28	DESCRIPTION	QUALITY SYMBOLS	GENERAL TOLERANCES (UNLESS SPECIFIED)	DIMENSION STYLE	SCALE	DESIGN UNITS	THIRD ANGLE PROJECTION	
		▽=0 ∇=0	mm INCH	MM ONLY	NTS	METRIC		
			4 PLACES ± --- ± --- 3 PLACES ± --- ± --- 2 PLACES ± 0.25 ± --- 1 PLACE ± --- ± ---	DRAWN BY DATE KSEE 2002/12/12	TITLE	EBBI, RECEPTACLE, CONN. 1.27MM CTR, 68 CKTS, BTB B/MATE, 3.50MM HT., R/A		
			ANGULAR ± 3 °	CHECKED BY DATE KCLING 2003/01/08	APPROVED BY DATE SKTOH 2003/01/09			
	DRAFT WHERE APPLICABLE MUST REMAIN WITHIN DIMENSIONS	MATERIAL NO.	DOCUMENT NO.	MOLEX INCORPORATED				
	SIZE A3	SEE TABLE	SD-87537-022				SHEET NO. 2 OF 2	
THIS DRAWING CONTAINS INFORMATION THAT IS PROPRIETARY TO MOLEX INCORPORATED AND SHOULD NOT BE USED WITHOUT WRITTEN PERMISSION								