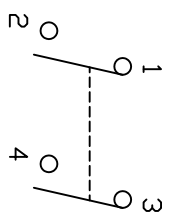
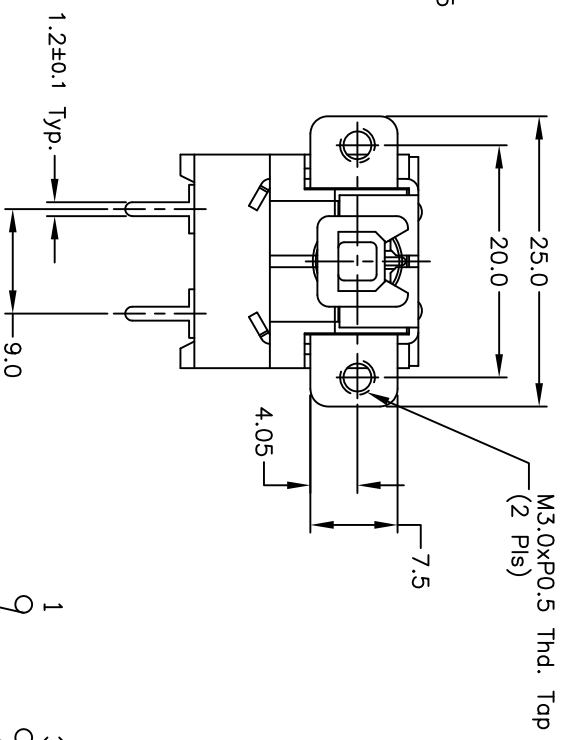
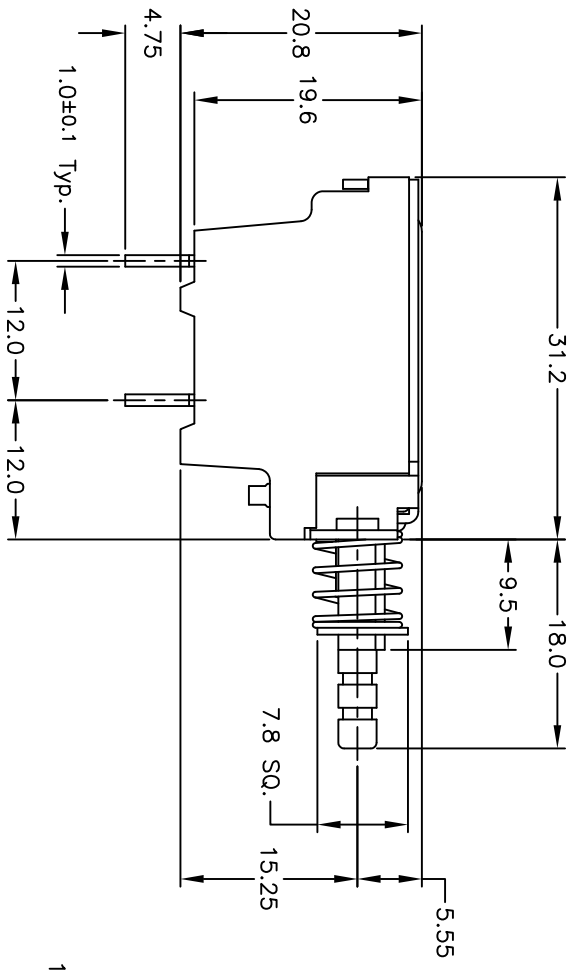


RECOMMEND P.C.B. LAYOUT



CIRCUIT: DPST (Normally Open)
CONTACT CONFIGURATION

- NOTES:
1. ALL DIMENSIONS IN MM
 2. GENERAL TOLERANCE: $0.0 = \pm 0.4$
 $0.00 = \pm 0.25$
 3. RATING: AC 250V 5A; IN-RUSH: 80A, TV-5
 4. CONTACT RESISTANCE: 50m ohms MAX. (AT DC 5V 1A)
 5. DIELECTRIC STRENGTH: AC 1,000V FOR 1 MINUTE
 6. OPERATING FORCE: $500 \pm 100gf$
 7. TRAVEL: Full: 4.0mm; Lock: 2.5mm



B	19646	ADDED LOGG	02/02/11	BMA
A	10235	RELEASED FOR PRODUCTION		
REV.	ECN No.	DESCRIPTION	DATE	CHKD

TITLE		SCALE		DATE	DR	DWG	REV
P297 EE P B		1.5:1		6/7/99	MM	P030115	B

THE INFORMATION CONTAINED IN THIS DOCUMENT IS PROPRIETARY TO E-SWITCH AND IS NOT TO BE COPIED OR TRANSFERRED