

# I.147 | Tapered handles

Duroplast

METRIC

RoHS

PF

+230°F  
-4°F

## MATERIAL

Phenolic based (PF) Duroplast, black colour, glossy finish.

## STANDARD EXECUTION

Threaded blind hole.



# I.149 | Tapered handles

Duroplast

METRIC

RoHS

PF

+230°F  
-4°F

## MATERIAL

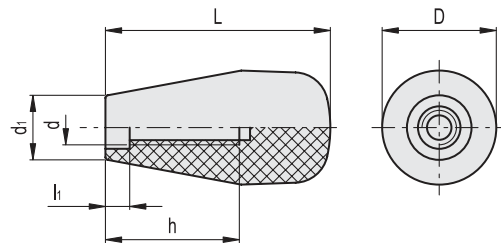
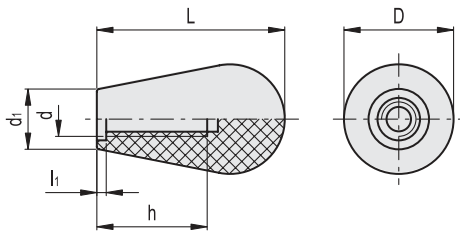
Phenolic based (PF) Duroplast, black colour, glossy finish.

## STANDARD EXECUTION

Threaded blind hole.



Conversion Table	
1 mm = 0,039 inch	
L	
mm	inch
40	1.57
47	1.85
60	2.36
67	2.64
77	3.03
86	3.39



METRIC

Code	Description	D	L	d	d1	h	li	⚖
19801	I.147/40-M6	24	40	M6	14	25	3	16
19802	I.147/40-M8	24	40	M8	14	28	3.5	14
19901	I.147/50-M8	29	47	M8	16	28	3.5	25
19902	I.147/50-M10	29	47	M10	16	28	3.5	24
20001	I.147/60-M10	35	60	M10	19	35	8	46
20002	I.147/60-M12	35	60	M12	19	35	8	44
20101	I.147/75-M14	39	77	M14	22	45	6	72

METRIC

Code	Description	D	L	d	d1	h	li	⚖
120035	I.149/65-M10	34	67	M10	19	40	8	56
120055	I.149/85-M10	34	86	M10	20	48	7	72

- 1
- 2
- 3
- 4
- 5
- 6
- 7
- 8
- 9
- 10
- 11
- 12
- 13
- 14
- 15
- 16
- 17
- 18

Fixed & Revolving handles