

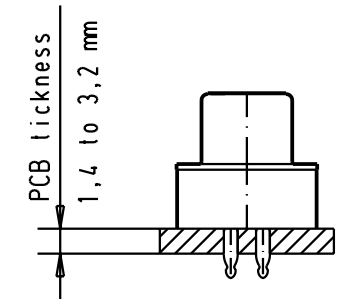
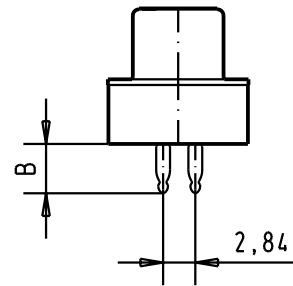
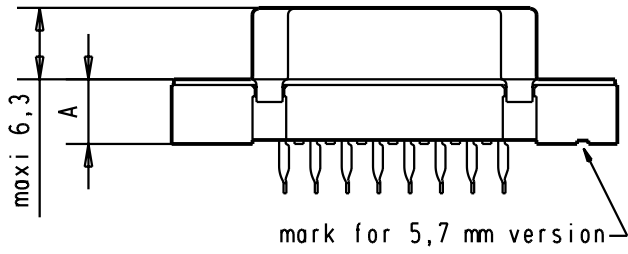
5

4

3

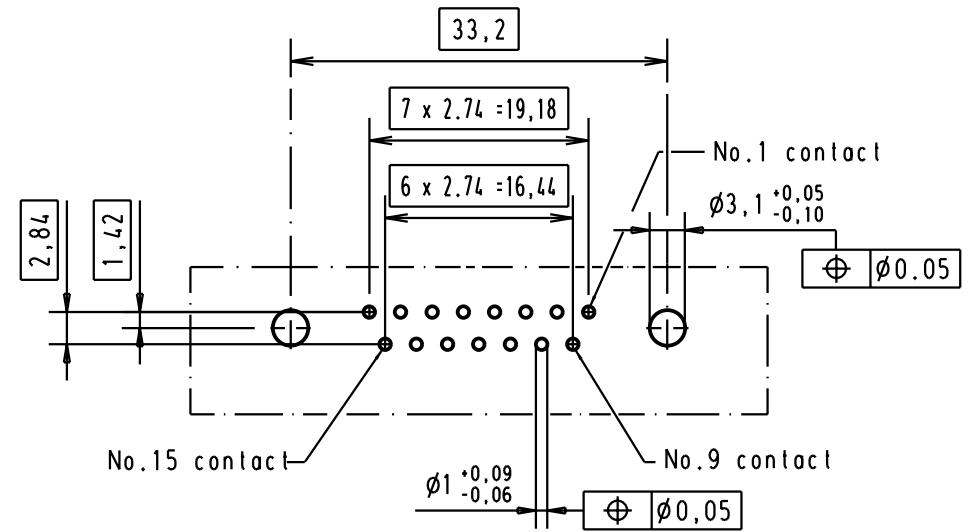
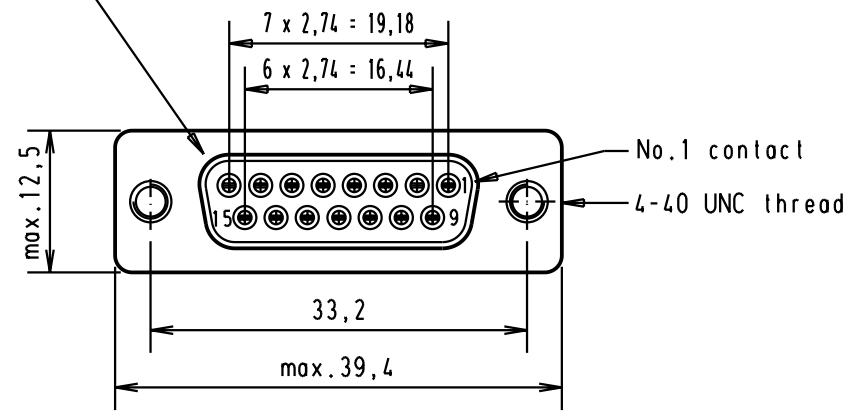
2

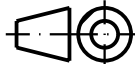

1



PCB layout hole component side
(PCB holes plating : Tin)

Mating face according to : MIL-C-24308 / DIN 41652 / CECC 75301-802



A	09662147502	3	6	4.20								 All Dim. in mm Orig. Size DIN A 3	D-Sub 15 poles straight female connector with press-in termination, version nul. 2,5:1
	09662146502	2	6	4.20				Detail.	30/06/95	jfb			
	09662145502	0.76 µm Au	6	4.20				Insp.					
	09662147506	3	5.7	4.35	31079	29-AUG-02	CV	Stand.					
	09662146506	2	5.7	4.35	17971	04/14/97	jfb	HARTING EURL F-95972 Paris					
	09662145506	0.76 µm Au	5.7	4.35	16236	30/06/95	jfb						
	Part number	Performance level	A±0.2	B±0.2	Mod.	Dat.	Name	Sub.					Blatt/ Page 3