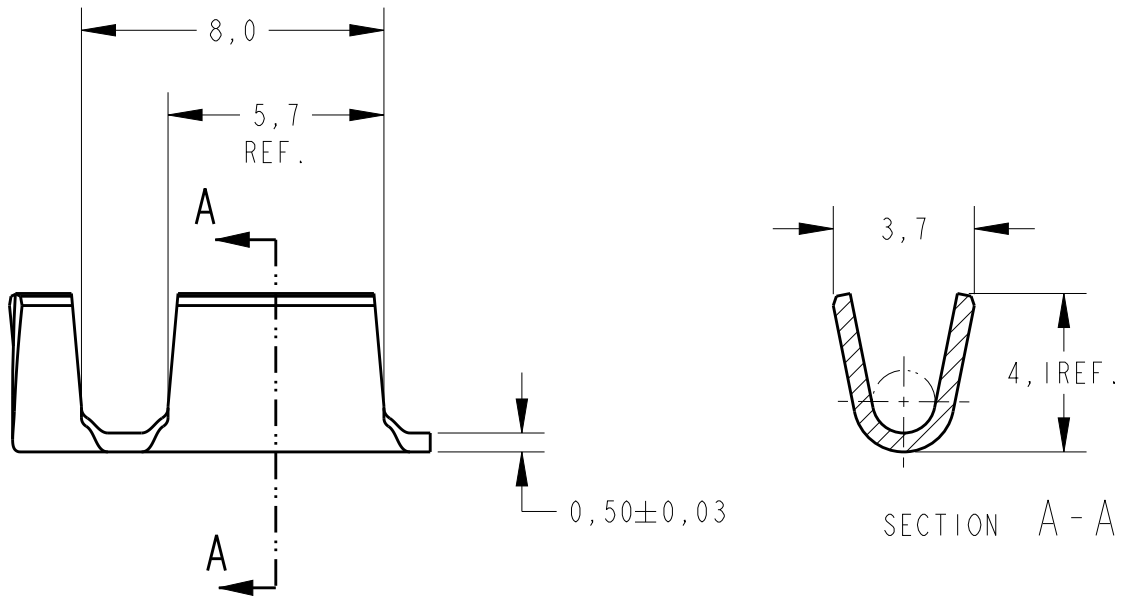
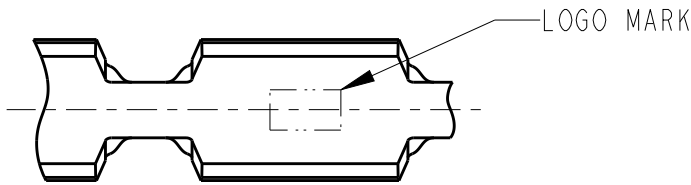


REVISIONS

P	LTR	DESCRIPTION	DATE	DWN	APVD
	B2	REDRAWN AND REV. ECO15-011920	15OCT2015	HC	WLS
	B3	REVISED BY ECO 16-003728	11MAR2016	HC	WLS
	B4	REVISED BY ECO 19-007234	09MAY2019	WLS	WLS

1 - OBSOLETE PARTS: OBSOLETE CIS STREAMLINING PER D.RENAUD/D.SINISI

2 - CRIMP WIDTH .110 F TYPE
 CRIMP HEIGHT (+/- .002) = (TOTAL CMA + 10606) / 186966



OBSOLETE 1	TIN PLATED	STEEL	626584-5
OBSOLETE	NICKEL PLATED	STEEL	626584-4
OBSOLETE		STEEL	626584-3
OBSOLETE	TIN PLATED	BRASS	626584-2
		BRASS	626584-1
	FINISH	MATERIAL	PART NUMBER

WIRE RANGE:
 1500/5000 CMA

DIMENSIONS: mm	DWN H.C. CANTERI 25MAY2015	MATERIAL -	FINISH -
TOLERANCES UNLESS OTHERWISE SPECIFIED:	CHK W.L. STEFANI		
0 PLC ±	APVD -		
1 PLC ±0,3	PRODUCT SPEC -	NAME SPLICE	
2 PLC ±0,3	APPLICATION SPEC -	SIZE A4	CAGE CODE -
3 PLC ±		DRAWING NO C-626584	RESTRICTED TO
4 PLC ±			
ANGLES ±1°	WEIGHT -		
	CUSTOMER DRAWING	SCALE 5/1	SHEET 1 OF 1
			REV B4