

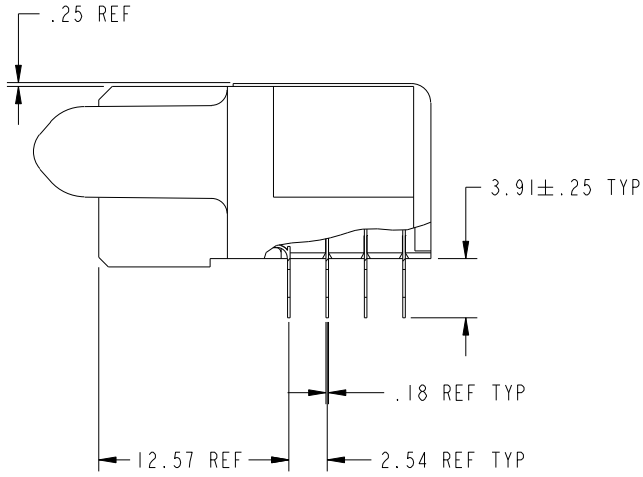
Tous droits strictement reserves. Reproduction ou communication a des tiers interdite sous quelque forme que ce soit sans autorisation ecrite du proprietaire. Propriete de c FCI. Droits de reproduction FCI.

All rights strictly reserved. Reproduction or issue to third parties in any form whatever is not permitted without written authority from the proprietor. Property of FCI. Copyright FCI.

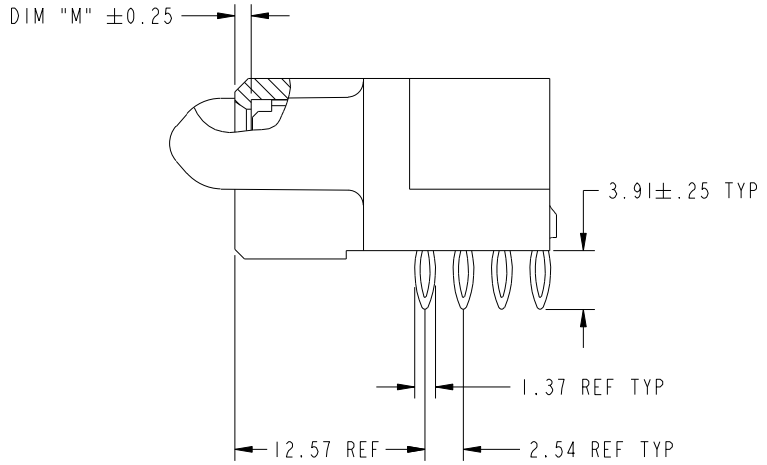


PRODUCT NUMBER

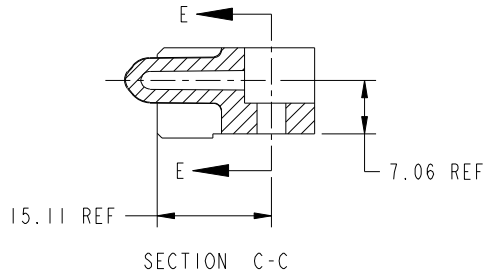
51915-113__
NOTE 3



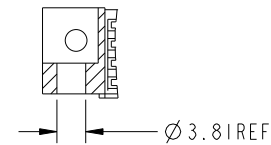
BROKEN-OUT SECTION A-A
SCALE 2:1



BROKEN-OUT SECTION B-B
SCALE 2:1



SECTION C-C



PARTIAL SECTION E-E

mat'l code		SEE NOTE 2		tolerances unless otherwise specified		CUSTOMER		 www.fciconnect.com	
lir	ecn no.	dr	date	linear	0.X ± 0.3	COPY		title	
A				linear	0.XX ± 0.13	projection		32S + IIP	
				angles	0.XXX ± 0.051			R/A PF RECEPTACLE	
				dr	JM GUO 08/24/06			product family	
				engr	SALLY LUO 08/24/06	MM		PwrBlade	
				chr	BEER FU 08/24/06	scale		code	
				appd	JOSEPH HSIA 08/24/06	1:1		213	
sheet index		revision sheet						size	
								dwg no	
								A 51915-113	
								sheet	
								2 of 4	

cage code 28556

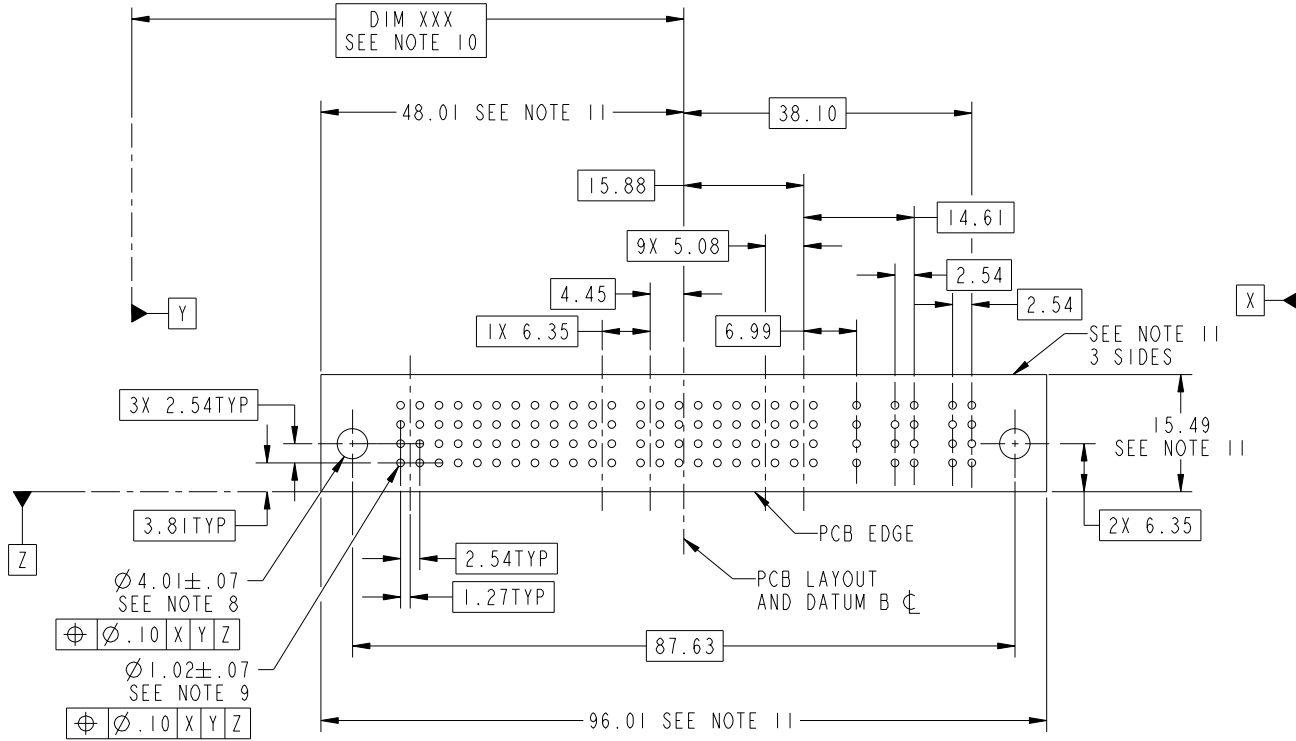
Tous droits strictement reserves. Reproduction ou communication a des tiers interdite sous quelque forme que ce soit sans autorisation ecrite du proprietaire. Propriete de c.FCI. Droits de reproduction FCI.

All rights strictly reserved. Reproduction or issue to third parties in any form whatever is not permitted without written authority from the proprietor. Property of FCI. Copyright FCI.



PRODUCT NUMBER

51915-113_
NOTE 3



$\varnothing 4.01 \pm .07$
SEE NOTE 8
 $\varnothing .10$ X Y Z

$\varnothing 1.02 \pm .07$
SEE NOTE 9
 $\varnothing .10$ X Y Z

mat'l code				SEE NOTE		tolerances unless otherwise specified		CUSTOMER		FCI	
lir	ecn no.	dr	date	linear	0.X ± 0.3	COPY		www.fciconnect.com		title	
A				linear	0.XX ± 0.13	projection		32S + IIP		R/A PF RECEPTACLE	
				angles	0.XXX ± 0.051	MM		product family		code	
				dr	0° ± 2°	scale		PwrBlade		213	
				enrg	JM GUO 08/24/06	1:1		size		sheet	
				chr	SALLY LUO 08/24/06			dwg no		3 of 4	
				appd	BEER FU 08/24/06			A		51915-113	
					JOSEPH HSIA 08/24/06						
sheet index	revision sheet										



cage code 28556

STAT: Released Printed: Dec 20, 2010

Pro/E

PDM: Rev: A

1 | 2

3 |

4

A

A

B

B

1 | 2

4

Tous droits strictement réservés. Reproduction ou communication a des tiers interdite sous quelque forme que ce soit sans autorisation écrite du propriétaire. Propriété de c.FCI. Droits de reproduction FCI.



All rights strictly reserved. Reproduction or issue to third parties in any form whatever is not permitted without written authority from the proprietor. Property of FCI. Copyright FCI.

1 | 2

3

4

PRODUCT NUMBER

51915-113__
NOTE 3

NOTES:

1. DIMENSIONS AND TOLERANCES ARE IN ACCORDANCE WITH ASME Y14.5M, 1994 UNLESS OTHERWISE SPECIFIED.

CONNECTOR NOTES:

- 2. HOUSING MATERIAL: UL 94 V-0 GLASS FILLED
HIGH-TEMP THERMOPLASTIC
POWER CONTACT MATERIAL: COPPER ALLOY
SIGNAL PIN MATERIAL: COPPER ALLOY
- 3. PLATING:
51915-113, 51915-113LF PLATING SPEC. WAS SHOWN IN THE PRINT OF 10064183.
- 4. MANUFACTURER'S NAME, P/N, AND DATE CODE TO APPEAR ON THIS SURFACE.
- 5. PRODUCT SPECIFICATION GS-12-149.
APPLICATION SPECIFICATION BUS-20-067.
- 6. PACKAGED IN TRAYS.

PCB NOTES:

- 7. ALL HOLE DIAMETERS ARE FINISHED HOLE SIZE.
- 8. MOUNTING HOLES, WHERE APPLICABLE, ARE UNPLATED.
- 9. $\varnothing 1.151 \pm 0.025$ DRILLED HOLES PLATED WITH 0.008 MIN SnPb OR Sn OVER 0.03 TO 0.08 Cu PLATING TO ACHIEVE $\varnothing 1.02 \pm .07$ HOLE.
- 10. "DIM XXX" TO BE DETERMINED BY THE CUSTOMER.
- 11. CONNECTOR KEEP-OUT ZONE.
- 12. USE FCI CAM TOOL 430140-XXX TO APPLY CONNECTOR TO PCB.

mat'l code		SEE NOTE 2		tolerances unless otherwise specified		CUSTOMER		 www.fciconnect.com		
lfr	ecm no.	dr	date	linear	0.X ±0.3		COPY		title	
A					0.XX ±0.13		projection			32S + 11P R/A PF RECEPTACLE
					0.XXX ±0.051					
				angles	0° ±2°				product family	
				dr	JM GUO	08/24/06	scale		PwrBlade	
				enr	SALLY LUO	08/24/06	1:1		code	
				chr	BEER FU	08/24/06	A		213	
				appd	JOSEPH HSIA	08/24/06	51915-113		sheet	
sheet index	revision sheet								4 of 4	

1 | 2

Pro/E

PDM: Rev: A

STATUS: Released

Printed: Dec 20, 2010

A

A

B

B

cage code 28516

4