

# MAX-750 Multiple Output

NON-STOCK ITEM; SPECIAL ORDER ONLY  
NOT FOR NEW DESIGNS



## FEATURES:

- Over 4 watts/in<sup>3</sup> power density
- 80% overall efficiency
- VMEbus and Multibus II system compatibility
- Meets international safety agency requirements
- All outputs fully regulated  $\pm 1\%$
- High peak current for motor starting
- Ac automatic line selection option

## SPECIFICATIONS:

### INPUT

**Ac Input:** 90-132 Vac/180-264 Vac, 47 to 63 Hz. User selectable. See option "A" for automatic line selection. Internally fused for 15 A.

**Inrush:** Cold start ac current is less than 90 A at 115 Vac and 30 A at 230 Vac. Limited by thermistor.

**Holdup Time:** 16 ms minimum after removal of power, at nominal line, full load.

**Efficiency:** 80% typical.

**Brownout Protection:** Holds regulation to 85 Vac or 170 Vac.

### OUTPUT

**Adjustability:** User adjustable  $\pm 5\%$  minimum.

**Line & Load Reg:**  $\pm 1\%$  over ac input range and 0 to 100% load change. Output #1 requires minimum load of 10%.

**Ripple & Noise:** Less than 1% p-p or 100 mV, whichever is greater.

**Remote Sense (Output #1):** Compensates for 250 mV total line drop. Open sense lead protection.

**Temperature Coefficient:** 0.02% per degree C.

**Stability:** 0.1% over 8 hours after 30 minutes warm-up.

**Transient Response (Output #1):** Output voltage returns to within 1% in less than 500  $\mu$ s for a 50% load change. Peak transient does not exceed 5%.

**Overload Protection:** All outputs are protected against overload and short circuit. Automatic recovery upon removal of fault.

**Overvoltage Protection (Output #1):** Protects load against power supply induced overvoltage. Trip point is factory set so that output voltage cannot exceed 136% of nominal.

**Remote Inhibit:** Contact closure to the negative sense line drops output power to nominal zero.

**Reverse Voltage:** Protected against reverse voltage up to supply current rating.

### ENVIRONMENTAL

**Thermal Protection:** Shuts down power supply if overheated. Automatic recovery.

**Temperature Range:** 0° to 50°C at full ratings. Derate to half power at 70°C.

**Safety Agencies:** Most models are approved to UL1950; CSA 22.2 #234; IEC 950 and TÜV EN60950, Class 1 SELV., CE 72/23/EEC/93/68EEC (low voltage directive).

**Conducted RFI:** Meets FCC Part 15, Subpart J, Class A; EN55022 Class B; CISPR 22 Class B.

**Cooling:** 30 cfm required to achieve full ratings.

**Output Isolation:** Isolated from ground 50 Vdc.

### OPTIONS:

**Option "A", Ac Auto-Range:** Automatically selects proper ac line voltage range to enable power operation at either 115 or 230 Vac without user intervention.

**Option "P", Ac Power Fail:** Provides TTL "0" 5 ms before output voltage goes out of regulation band upon loss of ac power. VMEbus compatible, provides 48 mA sink current capability. Not available if option "G" is selected.

### AC INPUT

FUNCTION	115 VAC*	230 VAC	CONNECTOR
Input Select	Short	Open	0.250 Male Faston
TB1-(L)	Line	Line 1	Barrier strip #6-32 screws 3/8 centers
TB1-(N)	Neutral	Line 2	
TB1-(GND)	Safety Ground	Safety Ground	

### DC OUTPUT

FUNCTION	LOCATION	NOTES	CONNECTOR
Output #1	Terminal marked +V	Main output	Bus bars #1/4-20 screws
	Terminal marked -	Rtn (common)	
Output #2	COM		Barrier strip #6-32 screws 3/8" centers
	TB2-3		
Output #3	TB2-4	Rtn (common)	
	TB2-5		
Output #4 (If provided)	TB2-4	Rtn (common)	
	TB2-1	(+)	
	TB2-2	(-)	

\*Rtn connected to common only if output is polarized in product

### STATUS AND CONTROL

FUNCTION	LOCATION	NOTES	CONNECTOR
Remote Sense	J1-1 (+S)	Output #1 Sense	AMP MTA type
	J1-2 (-S)	Output #1 Sense Rtn	#640456-4 pin
Ac Power Fail or Dc Power Good*	J1-3 (PF)	Reference to J1-2	header (locking)
Inhibit	J1-4(1H)	Short to J1-2	

\*Optional function

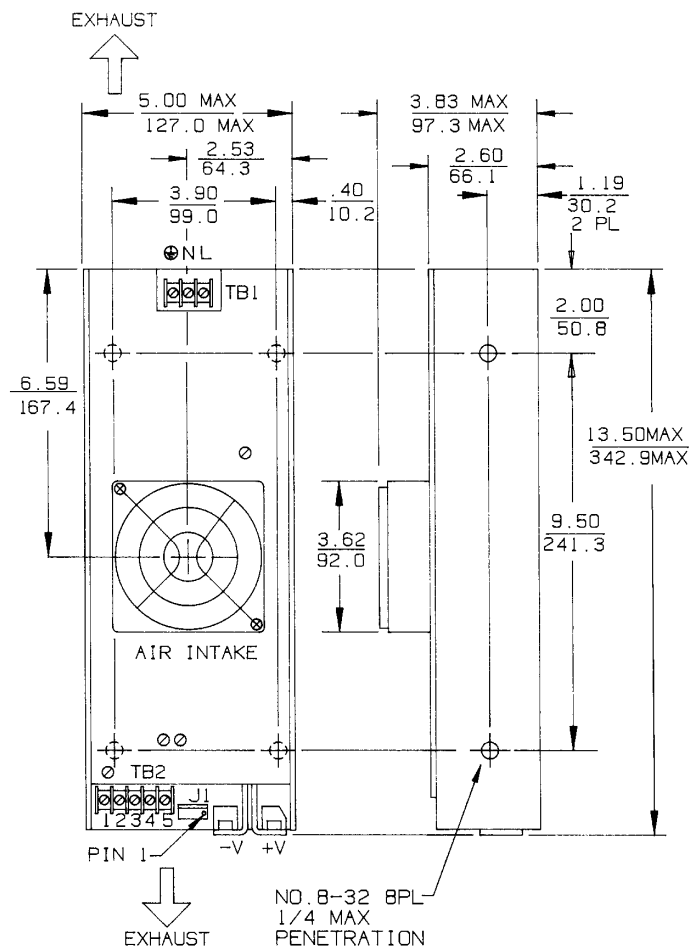


Condor D.C. Power Supplies, Inc., 2311 Statham Parkway, Oxnard, CA 93033  
800-235-5929 • 805-486-4565 • FAX 805-487-8911 • www.condorpower.com

# MAX-750 Multiple Output

Commercial Model	Power Out	Output No.	Output	Current	Total Regulation
MAX-754-1205P	750	1	+5 V	120 A	1%
MAX-754-1205AP		2	+12 V	12/20 A pk	1%
		3	-12 V	10 A	1%
		4	5.2 V	2 A	1%

## MAX-750 MECHANICAL SPECIFICATIONS:



Dimensions: Inches  
Millimeters



Condor D.C. Power Supplies, Inc., 2311 Statham Parkway, Oxnard, CA 93033  
800-235-5929 • 805-486-4565 • FAX 805-487-8911 • www.condorpower.com