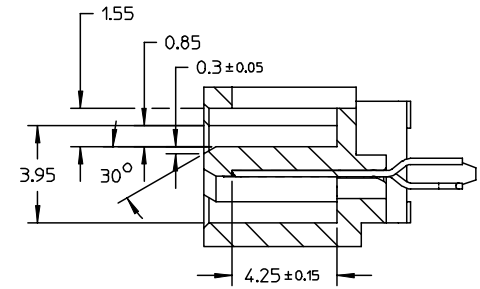
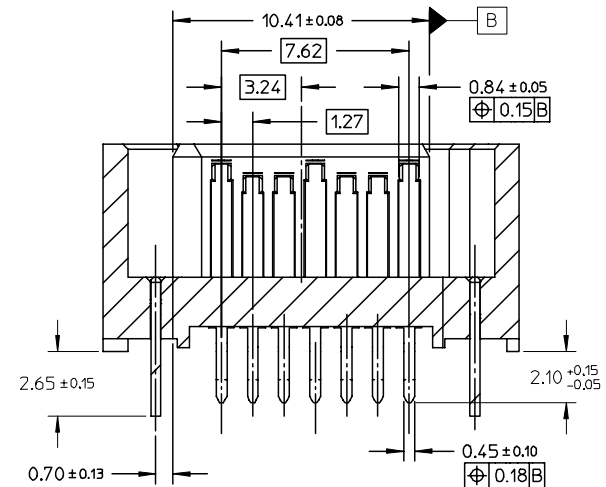
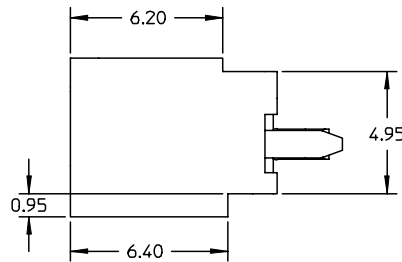
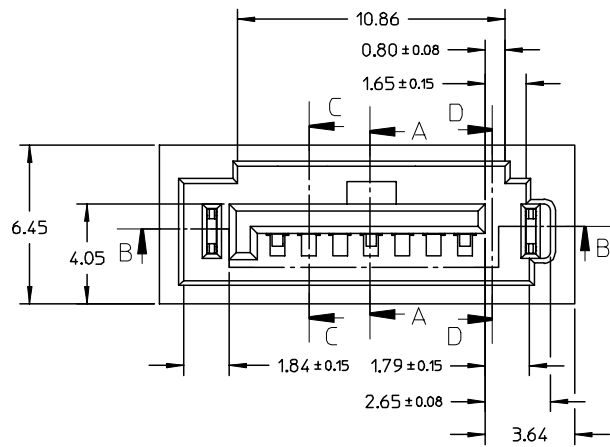


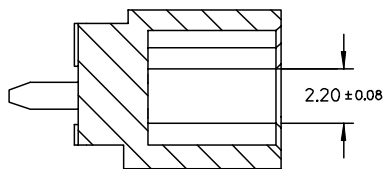
SECTION A-A



SECTION C-C



SECTION B-B



SECTION D-D

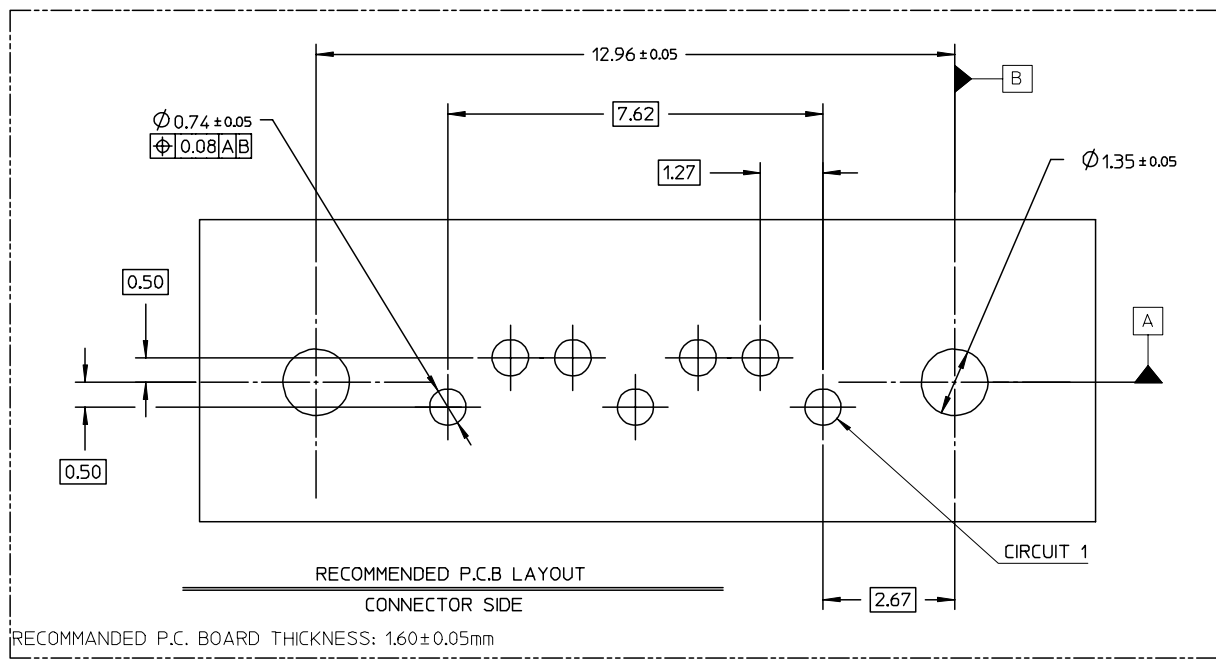
ADD PART NUMBER	2006/09/01
EC NO: SH2007-0134	2006/09/01
DRWN: BCHENZ6	2006/09/01
CHKD: JTIAN	2006/09/01
APPR: JNCHEN	2006/09/08

QUALITY SYMBOLS	DESCRIPTION
▽=0	
▽C=0	

GENERAL TOLERANCES (UNLESS SPECIFIED)	mm	INCH
4 PLACES	± ---	± ---
3 PLACES	± ---	± ---
2 PLACES	± 0.15	± ---
1 PLACE	± 0.25	± ---
ANGULAR ± 1 °		
DRAFT WHERE APPLICABLE MUST REMAIN WITHIN DIMENSIONS		

DIMENSION STYLE		SCALE	DESIGN UNITS	THIRD ANGLE PROJECTION
MM ONLY		5:1	METRIC	
DRAWN BY	DATE	TITLE		
GRATE	2004/08/05	HIGH SPEED CONNECTOR		
CHECKED BY	DATE	1.27MM PITCH VERTICAL		
GRATE	2004/08/05	DIP SOLDER TAIL		
APPROVED BY	DATE	MOLEX INCORPORATED		
VINCENT	2004/08/05	MOLEX INCORPORATED		
MATERIAL NO.	DOCUMENT NO.	SHEET NO.		
SEE SHEET 2	SD-47155-004	1 OF 2		

DRAWN BY		DATE	TITLE	
GRATE		2004/08/05	HIGH SPEED CONNECTOR	
CHECKED BY		DATE	1.27MM PITCH VERTICAL	
GRATE		2004/08/05	DIP SOLDER TAIL	
APPROVED BY		DATE	MOLEX INCORPORATED	
VINCENT		2004/08/05	MOLEX INCORPORATED	
MATERIAL NO.	DOCUMENT NO.	SHEET NO.		
SEE SHEET 2	SD-47155-004	1 OF 2		



NOTES:

1. MATERIAL:
HOUSING: THERMAL PLASTIC, COLOR: SEE CHART
GLASS FILLED: UL94V-0
TERMINAL/PEG: BRASS
2. TERMINAL PLATING:
CONTACT AREA: GOLD FLASH
SOLDER TAIL:
TIN PLATED 1.27 MICRON MINIMUM OVER
1.27 MICRON MINIMUM NICKEL UNDER PLATE
3. PEG PLATING:
TIN PLATED 1.8 MICRON MINIMUM OVER
1.27 MICRON MINIMUM NICKEL UNDER PLATE
4. PACKAGING: PK-67800-002
5. PRODUCT SPECIFICATION REFER TO PS-67490-001
6. RECOMMENDED PROCESS: WAVE SOLDERING
7. PRODUCT COMPLIANT TO RoHS DIRECTIVE 2002/95/EC AND ELV DIRECTIVE 2000/53/EC*

471554061	SEE NOTE2	IVORY
471554051	SEE NOTE2	LIGHT BLUE
471554041	SEE NOTE2	NATURE COLOR
471554031	SEE NOTE2	PROCESS BLUE C DELTA E<3
471554001	SEE NOTE2	BLACK
MATERIAL NUMBER	PLATING TYPE	PLASTIC COLOR



ADD PART NUMBER EC NO: SH2007-0134 DRWN: BCHENZ6 CHKD: JTIAN APPR: JNCHEN	2006/09/01 2006/09/01 2006/09/08	QUALITY SYMBOLS ▽=0 ▽C=0	GENERAL TOLERANCES (UNLESS SPECIFIED)		DIMENSION STYLE MM ONLY	SCALE 1:1	DESIGN UNITS METRIC	THIRD ANGLE PROJECTION			
			4 PLACES	± ---	± ---	GRATE	DATE	TITLE			
			3 PLACES	± ---	± ---	CHECKED BY	DATE	HIGH SPEED CONNECTOR 1.27MM PITCH VERTICAL DIP SOLDER TAIL			
2 PLACES	± 0.15	± ---	GRATE	DATE	MOLEX INCORPORATED						
1 PLACE	± 0.25	± ---	APPROVED BY	DATE	SD-47155-004						
ANGULAR ± 1 °			VINCENT	2004/08/05	MATERIAL NO.		DOCUMENT NO.	SHEET NO.			
DRAFT WHERE APPLICABLE MUST REMAIN WITHIN DIMENSIONS			SEE TABLE				2 OF 2				
THIS DRAWING CONTAINS INFORMATION THAT IS PROPRIETARY TO MOLEX INCORPORATED AND SHOULD NOT BE USED WITHOUT WRITTEN PERMISSION											