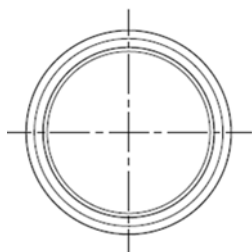
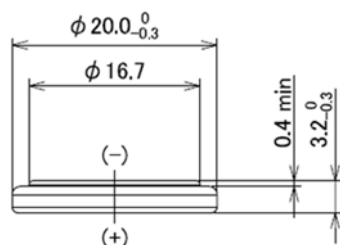


コイン形二酸化マンガンリチウム電池  
 Coin manganese dioxide lithium batteries

# CR2032W

**■外形寸法** Dimensions(mm)

 直径 : 20mm  
 Diameter

 高さ : 3.2mm  
 Height


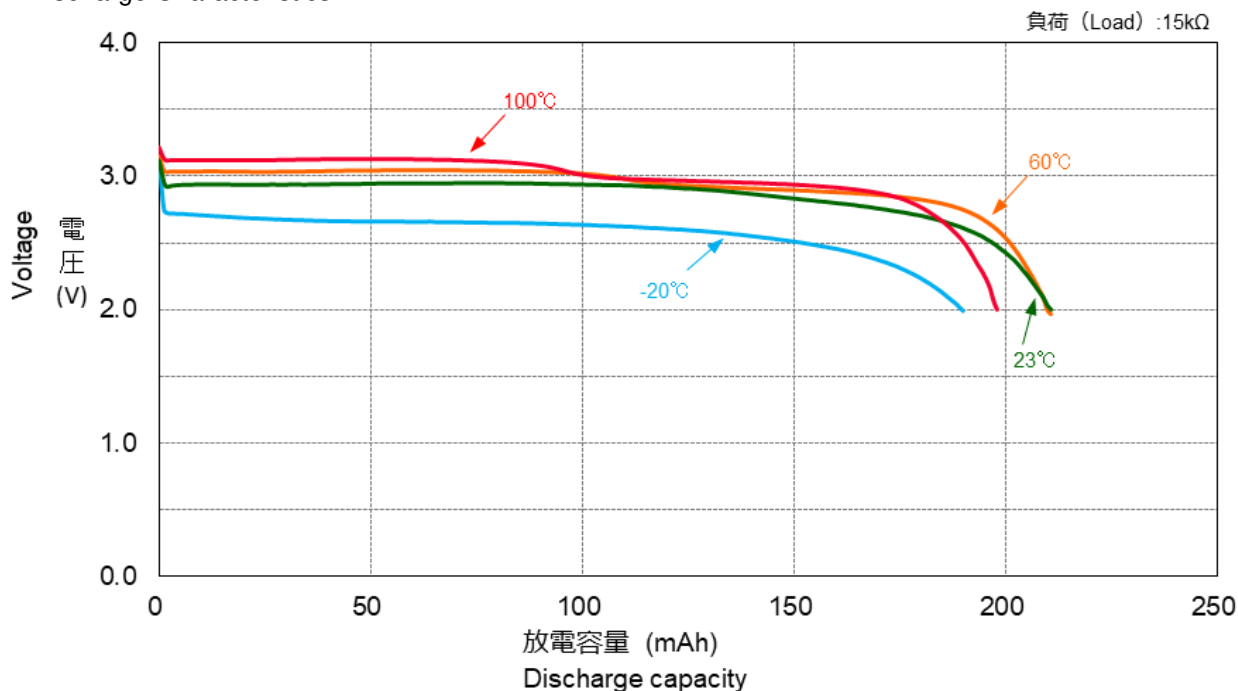
(Unit : mm)

**■定格** Specifications

公称電圧 <b>Nominal Voltage</b>	<b>3 V</b>
公称容量 (終止電圧 2.0V) <b>Nominal Capacity (2.0V cutoff)</b>	210 mAh
推奨連続放電電流値 (容量利用率高) <b>Recommended Continuous Discharge Current (High capacity usage rate)</b>	$\leq 1$ mA
標準質量 <b>Weight</b>	3.1 g
使用温度範囲 <b>Operating Temperature</b>	-40 ~ +125°C
<b>用途 Applications</b> <ul style="list-style-type: none"> <li>● TPMS(タイヤ空気圧監視システム)</li> <li>● ETC</li> <li>● FA機器</li> <li>● SRAMやリアルタイムクロック等メモリーバックアップ</li> <li>● その他高温/低温環境で使われる機器</li> </ul>	
<b>UL認定合格部品 UL Recognized components</b> <ul style="list-style-type: none"> <li>● 許可番号 <b>Certification number</b> : MH12566</li> <li>● Technician replaceable</li> </ul>	

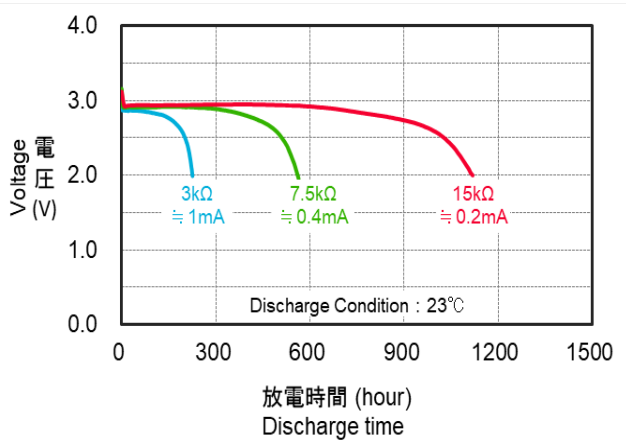
**■放電特性**

## Discharge Characteristics



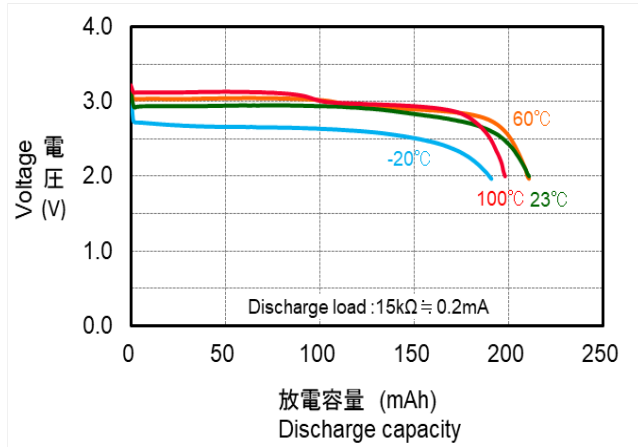
■ 放電負荷特性

Discharge Characteristics by Load



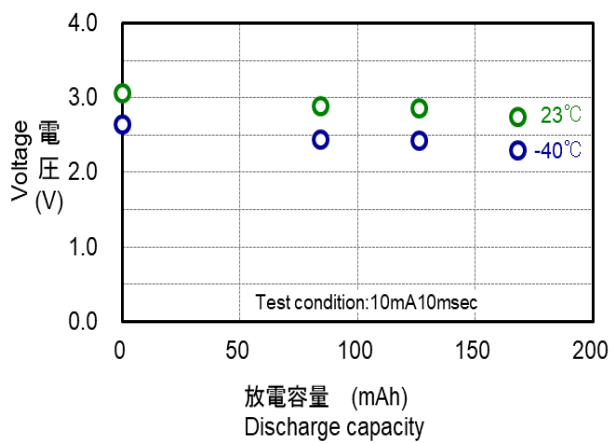
■ 放電温度特性

Discharge Characteristics by Temperature



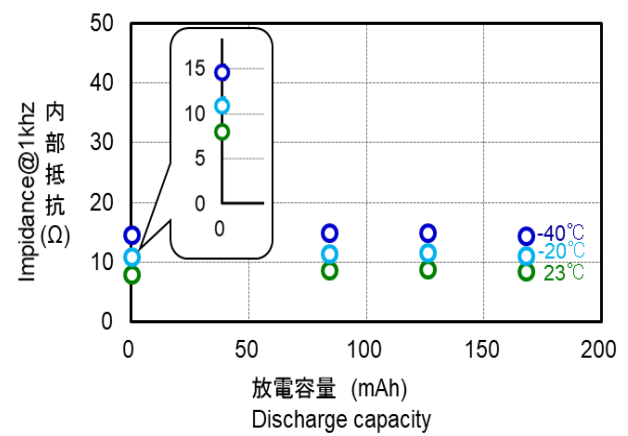
■ 閉路電圧特性

Closed Circuit Voltage by Temperature



■ 内部抵抗

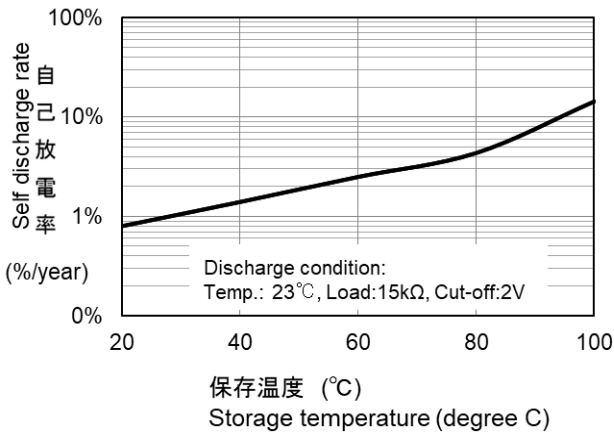
Impedance by Temperature



■ 自己放電特性

Self Discharge Characteristic by Temperature

注: 20°C未満の自己放電率は20°Cと同じ自己放電率になります。  
Note: The self-discharge rate of less than 20°C shows the same self-discharge rate as 20°C.



\*記載のデータ及び数値は、参考値であり保証値ではありません。

\*Data is not guaranteed, and is provided for reference purposes only.