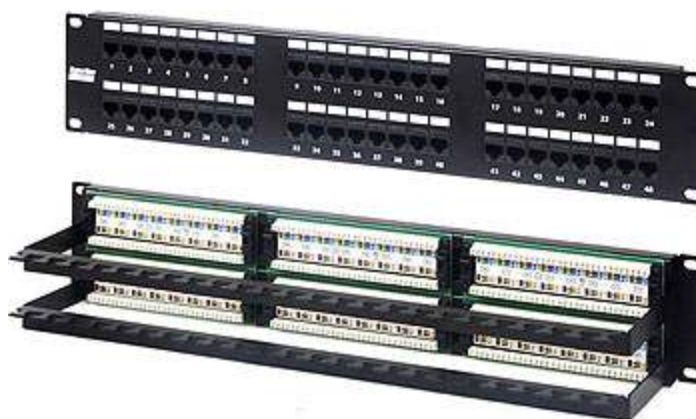


19" Patch Panel, XX ports RJ-45, Category 6

PP2-19-XX-8P8C-C6-110D



Description

Specifications

Meets 550 Mhz certification
Meets ANSI/TIA/EIA-568-B.2 Category 6 requirements
Meets TIA/EIA TSB-40
Meets ISO/IEC Generic Cabling Standard 11801:2002 ed.2.0
Meets CENELEC Generic Cabling Standard EN50173 â€œ 1:2002

Description

19" standard size for mounting in racks and cabinets
This patch panel is designed for 22-26 AWG solid conductors
Height: 1U, 2U
Horizontal termination

Materials

Housing: ABS 94V-0
IDC: PC UL94V-0
PCB: FR-4 1.6 mm (0.06") thick, 2 layers
Contacts: 0.35 mm (0.014") phosphor bronze with 1.27 micron (50 microinches) gold plating on contact area
Metal housing: 1.6 mm (0.06") thick metal

Construction characteristic features

Modern design and mounting simplicity
Color marking of conductors according to T568B and T568A
Numeral marking of ports on the front side of the panel
Color and numeral marking of IDC modules on the rear side
Space for additional marking
Hyperline patch cord usage provides the best connection
IDC Dual contacts provide minimal crosstalk
110 type punch down tool is used for cable termination

Electrical characteristics

According to UL 1863
Current rating: 1.5 A Max.
Voltage rating: 150 V
Contact Resistance: 20 mOhm
Insulation Resistance: 500 MOhm
Dielectric Withstand Voltage: 1000 V AC RMS, 60Hz/1min

Package

Hyperline patch panel
Cable manager
Plastic cable ties

Ordering

PP2-19-16-8P8C-C6-110D	19" Patch panel, 16 ports RJ45, category 6
PP2-19-24-8P8C-C6-110D	19" Patch panel, 24 ports RJ45, category 6
PP2-19-48-8P8C-C6-110D	19" Patch panel, 48 ports RJ45, category 6