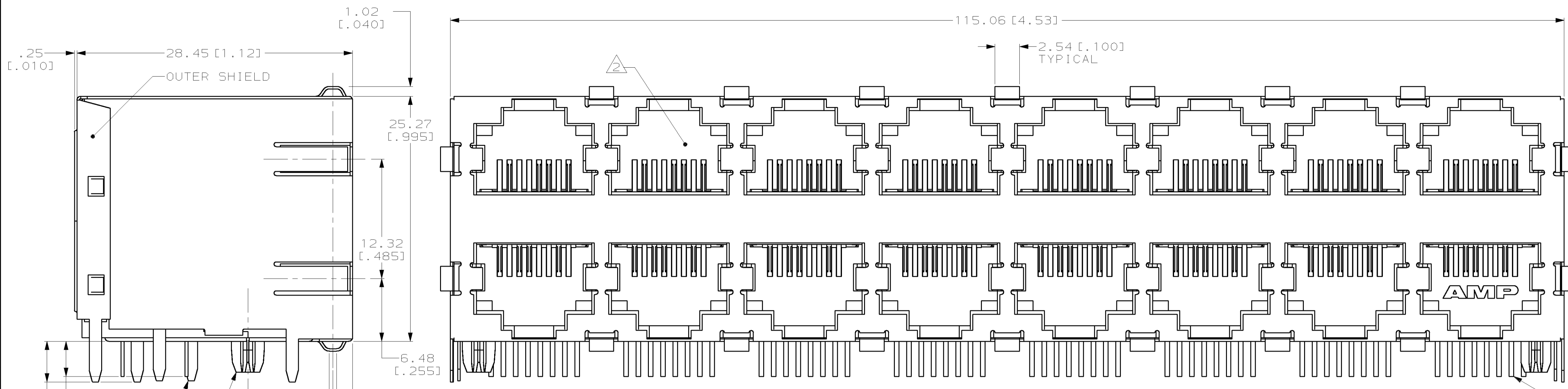
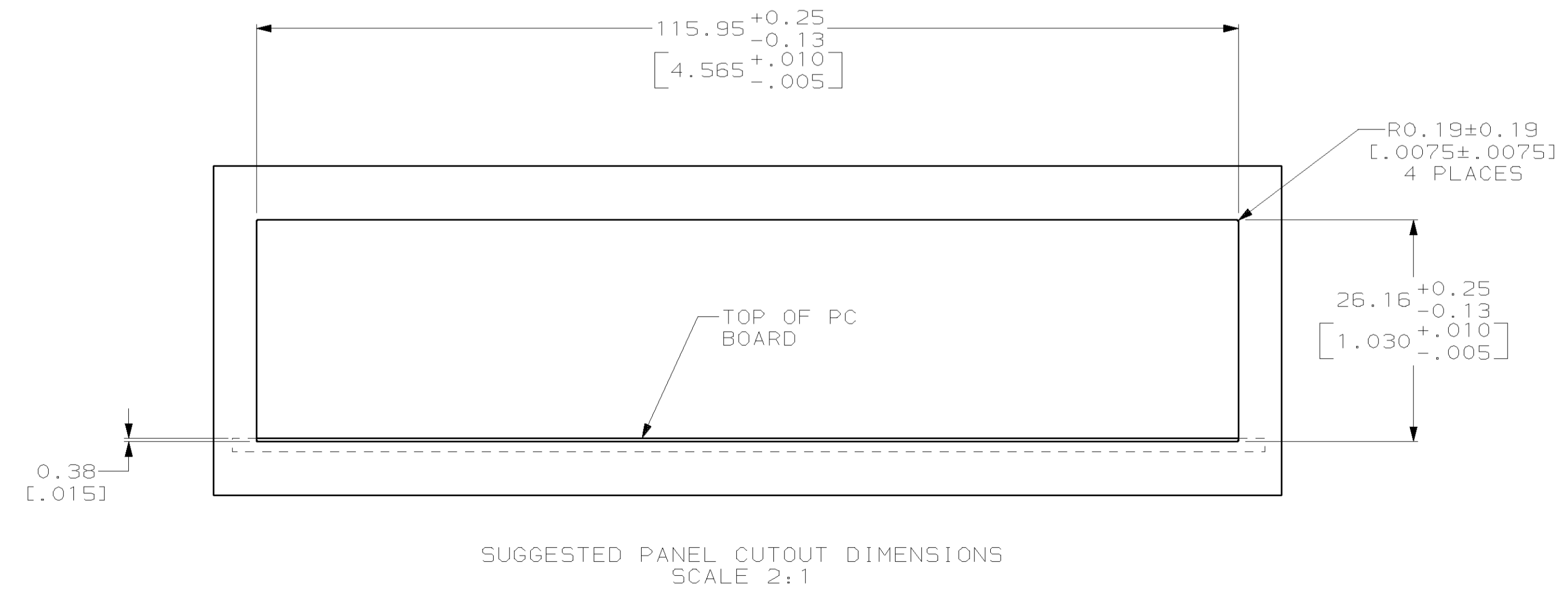
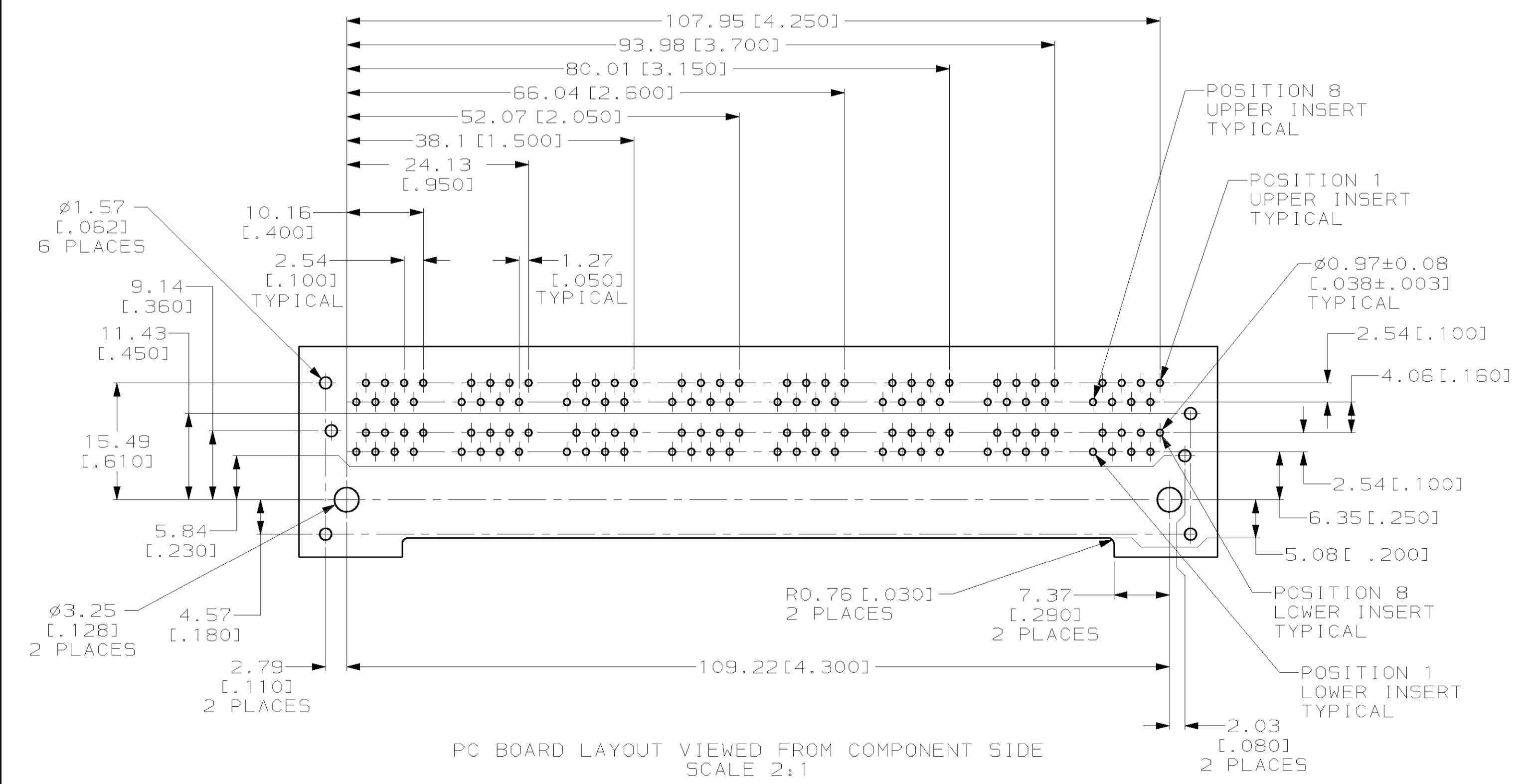
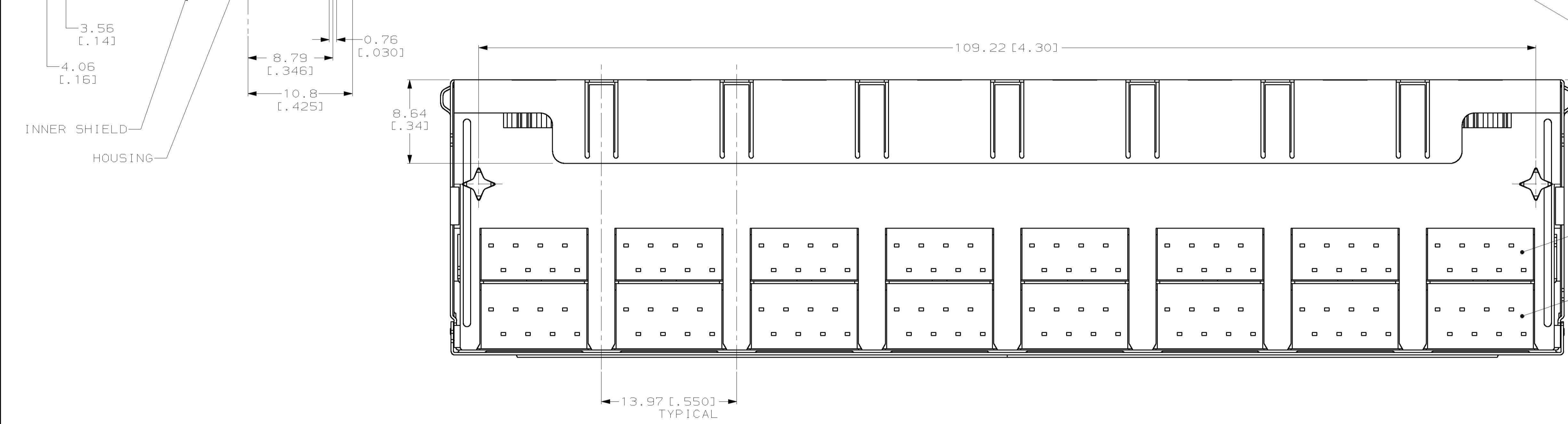


LOC	DIST	REV	DESCRIPTION	DATE	BY	APVD
AA	22	F	REVISED; EC OUI1C-0088-01	07MAR01	DL	DECL



MATERIAL:
HOUSING - PCT POLYESTER, BLACK, UL94V-0.
OVERMOLDED TERMINAL ARRAY - PBT, BROWN.
TERMINALS - 0.33 [.013] THICK PHOS BRONZE PLATED WITH 1.27µm [.000050] MINIMUM THICK HARD GOLD IN LOCALIZED AREA AND 3.81µm [.000150] MINIMUM THICK TIN-LEAD IN SOLDER AREA OVER 1.27µm [.000050] MINIMUM THICK NICKEL UNDERPLATE.
SHIELD - 0.25 [.010] THICK COPPER ALLOY PLATED WITH 2.03µm [.000080] MINIMUM THICK TIN-LEAD OVER 2.54µm [.000100] MINIMUM COPPER.

JACK CAVITY CONFORMS TO FCC RULES AND REGULATIONS, PART 68 SUBPART F.



569264-1
PART NUMBER

<small>THIS DRAWING IS A CONTROLLED DOCUMENT AND IS UNPUBLISHED. IT IS SUBJECT TO CHANGE AND THE CONTROLLING ENGINEERING ORGANIZATION SHALL BE CONTACTED FOR THE LATEST REVISION.</small>		DWN I. SPRINKLE 6-09-95 CHK C. WHITT 6-29-95 APPV VARSIK 6-30-95	AMP AMP Incorporated Harrisburg, PA 17105-3608
DIMENSIONS: mm [INCHES] 0 PLC ± 1 PLC ± 2 PLC ±0.25 [.05] 3 PLC ±0.13 [.005] 4 PLC ± ANGLES ±	TOLERANCES UNLESS OTHERWISE SPECIFIED: 0 PLC ± 1 PLC ± 2 PLC ±0.25 [.05] 3 PLC ±0.13 [.005] 4 PLC ± ANGLES ±	NAME STACKED MODULAR JACK ASSEMBLY, 2x8 PORT, 8 POSITION, SHIELDED, PANEL GROUND, CATEGORY 5 SIZE A1 CAGE CODE 00779 DRAWING NO. C-569264	CUSTOMER DRAWING SCALE 4:1 SHEET 1 OF 1 REV F