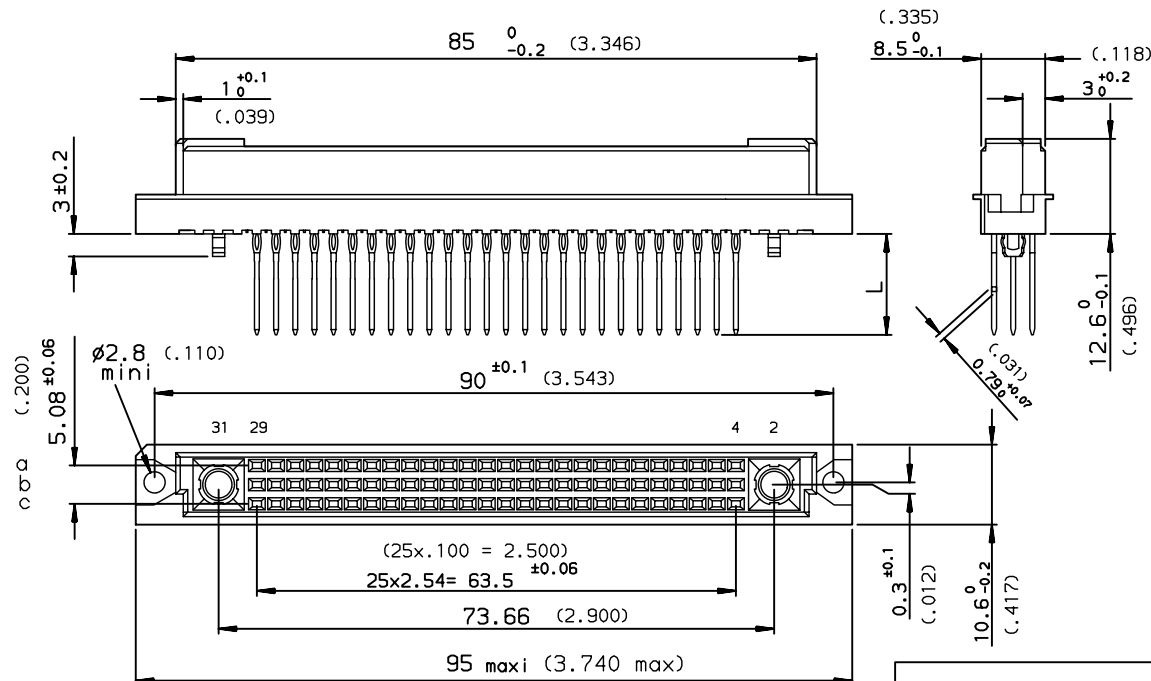


DIMENSIONS mm (inches)



ELECTRICAL DATA (for signal contacts)

- Current at AMB. 1.5 A at 20° C / 1 A at 70° C
- I max 2A
- Contact resistance $\leq 20\text{m}\Omega$ according to DIN 41640 Teil 4 test 2a
- Insulation resistance >math>10^9\text{M}\Omega</math> according to DIN 41640 teil 7 test 3a
- TEST VOLTAGE according to DIN 41640 teil 21
- contact/contact 1000V eff (0.5 mA / 50 Hz)
- contact/ground 1550V eff (0.5 mA / 50 Hz)
- Press Fit termination resistance $\leq 1\text{ m}\Omega$

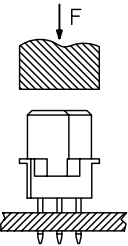
MECHANICAL DATA (for signal contacts)

- Mating force 78 Cts : $\leq 73\text{N}$ (16.5 Lb) / 52 Cts : $\leq 49\text{N}$ (11 Lb)
- Unmating force 78 Cts : >math>\geq 12\text{N}</math> (2.7 Lb) / 52 Cts : >math>\geq 8\text{N}</math> (1.8 Lb)
- Mechanical endurance class 1 500 matings unmatings according to DIN41640 teil 21
- class 2 400
- class 3 50
- Press in insertion force per pin 180 N (40.7 Lb) max / 75 N (17 Lb) standard
- Material insulator Polyester thermoplastic UL94V0
- Material contacts Phosphor bronze
- Finishing contact surface Gold over Nickel
- Finishing termination Tin Lead
- Shock $\leq 40\text{ma}$ according to DIN 41640 Teil 14 test 6c
- Vibration class 1 10-2000Hz/20g according to DIN 41640 Teil 15
- class 2 10-500Hz/5g
- Backpanel or PCB thickness: 1.6 , 2.4 or 3.2 mm

ENVIRONMENTAL DATA

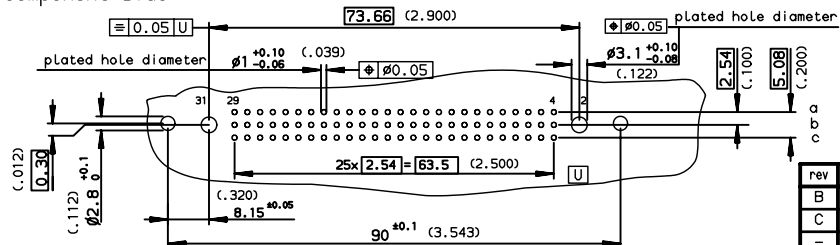
- Climatic category According to DIN 41612
- Corrosion According to DIN 41612

METHOD OF INSERTION ON THE PCB = FLAT ROCK



PERFORMANCES AS PER DIN 41612

PCB DRILLING component side



PART NUMBER	8609			BP			7		5	000	E3
PIN OUT											
rows a-b-c							3				78
rows a-c							4				52
NUMBER OF CONTACTS											
TERMINATION											
L = 13.10 ± 0.20 (.515)											91
L = 17.10 ± 0.20 (.673)											92
L = 3.00 ± 0.20 (.118)											94
PERFORMANCE CLASS											
DIN 41612 class 3											6/5/4
DIN 41612 class 2											
DIN 41612 class 1											

European Views

www.fciconnect.com		surface	tolerance std	projection	mm
		ISO 1302 ✓	ISO 406 ISO 1101		
TOLERANCES UNLESS OTHERWISE SPECIFIED					
Dr	LEGALLIC	1997/05/11	ANGULAR	0.X ± 0.1	size A3 Scale 1.5
Eng	LEGALLIC	1997/05/11	LINEAR	0.XX ± 0.1	
Chr	LEGARE	1997/05/11	0.XX' ± 2'	0.XXX ± 0.1	ECN LS07-0130
Appr	LEGARE	1997/05/11	Product family	DIN	Spec ref -
		title STRAIGHT FEMALE STYLE M		dwg no	Rev.
		PRESS FIT		C-8609-0525	C
		catalog no		CUSTOMER	sheet 1 of 1

rev	ecn no	dr	date
B	-	HLE	1997/05/11
C	LS07-0130	HLE	2007/05/22
-	-	-	-
-	-	-	-
-	-	-	-

Copyright FCJ