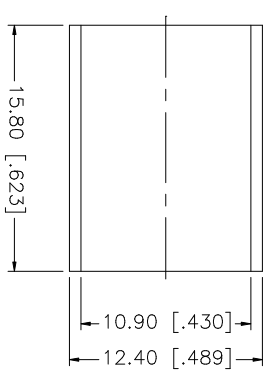
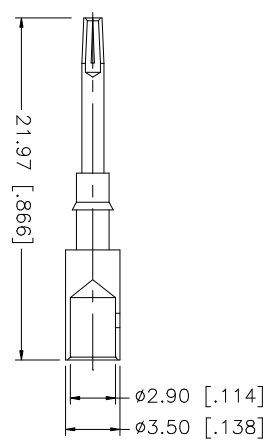
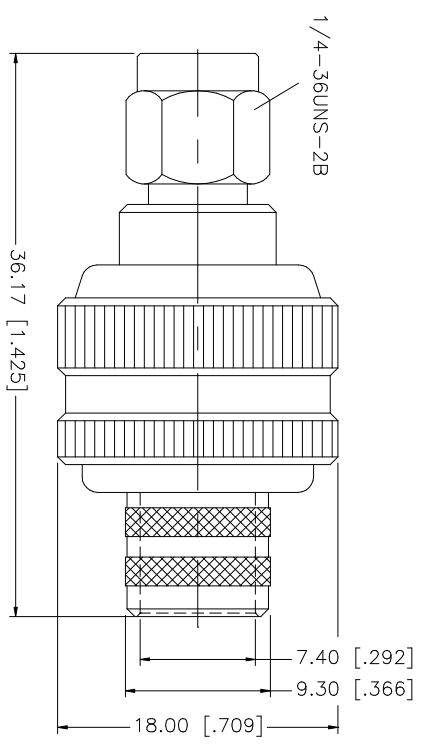
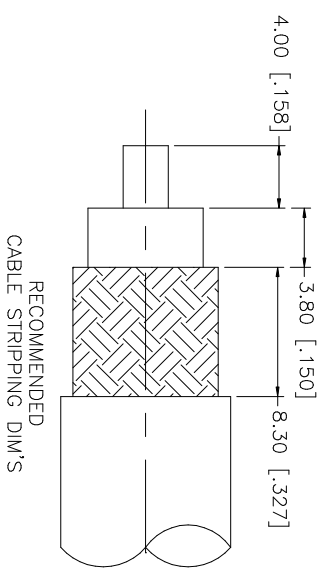


REV.	DATE	DESCRIPTION
NC	08/01/05	INITIAL RELEASE



- NOTES:
1. CRIMPED FERRULE  
HEX CRIMP SIZE ".429"
  2. CONTACT PIN TO SOLDER

NO.	DESCRIPTION	MATERIAL	FINISH	QTY	UNLESS OTHERWISE SPECIFIED DIMENSIONS ARE IN INCHES AND FOR CUSTOMER REFERENCE ONLY.	UNLESS OTHERWISE SPECIFIED TOLERANCES FOR MILLIMETERS ARE:	UNLESS OTHERWISE SPECIFIED TOLERANCES FOR INCHES ARE:	APPROVALS	DATE	PART DESCRIPTION							
8					UNLESS OTHERWISE SPECIFIED DIMENSIONS ARE IN INCHES AND FOR CUSTOMER REFERENCE ONLY.	UNLESS OTHERWISE SPECIFIED TOLERANCES FOR MILLIMETERS ARE:	UNLESS OTHERWISE SPECIFIED TOLERANCES FOR INCHES ARE:	DRAWN	G.R.S.	08/01/05	<p><b>Amphenol Connex</b></p> <p>PART DESCRIPTION</p> <p>SMA REVERSE POLARITY CRIMP PLUG (FOR BELDEN 9913, 9914, LMR-400)</p> <p>PART NO. 132298RP</p>						
7					0.5 - 8mm ± 0.20mm	.020 - .315 = ± 0.007"											
6					8 - 30mm ± 0.40mm	.315 - 1.180 = ± 0.015"											
5					30 - 120mm ± 0.50mm	1.180 - 4.724 = ± 0.020"											
4	FERRULE	COPPER	GOLD	1				CHECKED									
3	CONTACT PIN	BER. COPPER	GOLD	1				ISSUED									
2	INSULATOR	TEFLON	NATURAL	1				SHEET	1 OF 1								
1	HOUSING/BODY	BRASS	GOLD	1													
	DESCRIPTION	MATERIAL	FINISH	QTY	DO NOT SCALE DRAWING			CAD FILE	C:/132/132298RP.DWG	DWG. NO.	132298RP.DWG	REV.	NC	SIZE	A	SCALE	NA