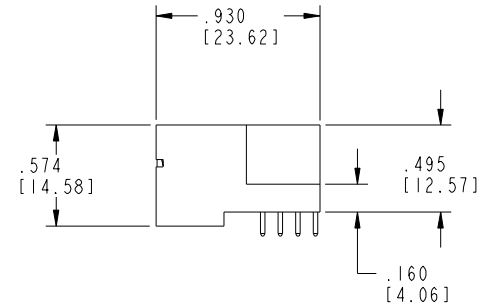
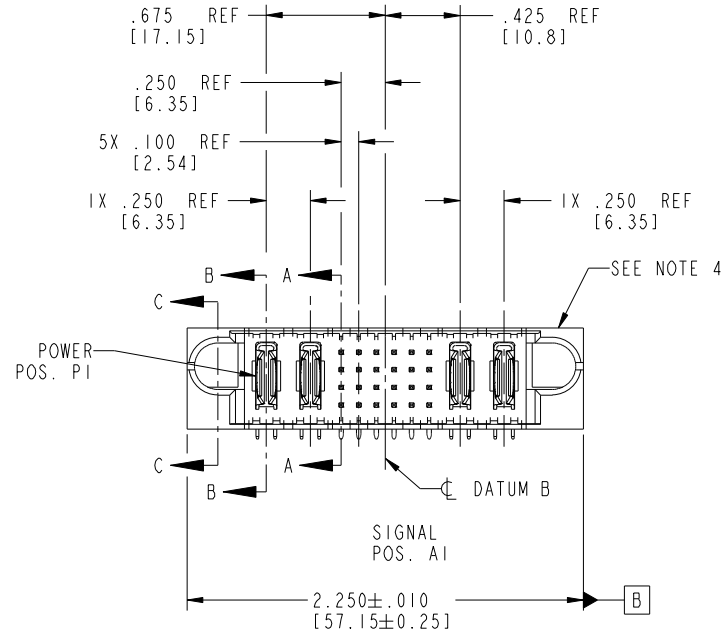


Tous droits strictement reserves. Reproduction ou communication a des tiers interdite sous quelque forme que ce soit sans autorisation écrite du propriétaire. Propriete de c FCI. Droits de reproduction FCI.



All rights strictly reserved. Reproduction or issue to third parties in any form whatever is not permitted without written authority from the proprietor. Property of FCI. Copyright FCI.

PRODUCT NO.	ROWS	POWER		SIGNAL						POWER			
		E1	P1	P2	1	2	3	4	5	6	P3	P4	E2
51730-120 Note: ③	D C B A												



CODE	DIM "M" MATING LENGTH	CONTACT TYPE
E	.220 [5.59]	SIGNAL
F	.220 [5.59]	SIGNAL
G	.220 [5.59]	SIGNAL
H	.220 [5.59]	SIGNAL
R	.270 [6.86]	SIGNAL
S	.270 [6.86]	SIGNAL
T	.270 [6.86]	SIGNAL
U	.270 [6.86]	SIGNAL
PA	N/A [N/A]	POWER

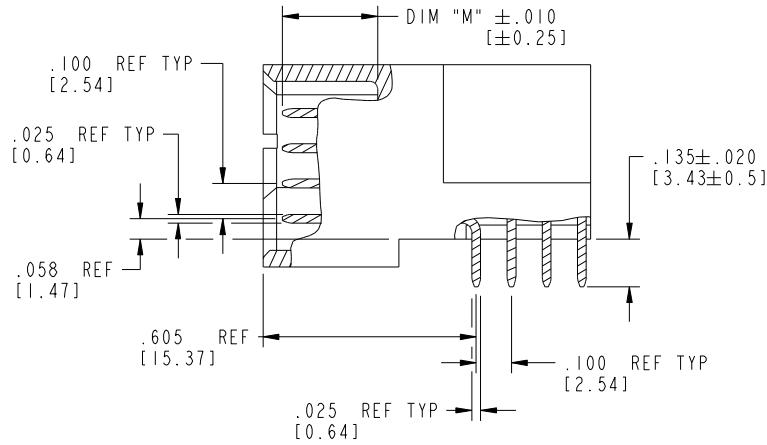
mat'l code				SEE NOTE 2		tolerances unless otherwise specified		CUSTOMER		FCI													
ltr	ecn no.	dr	date	linear	.XX±.01/0.X±0.3	angles	0°±2°	dr	RYAN.YUAN	12/21/05	www.fciconnect.com												
A	DG05-0555	RYAN	01/26/06		.XXX±.005/0.XX±0.13	enr	SALLY.LUO	01/26/06			title												
B	DG10-0009	WD	02/25/10		.XXX±.002/0.XXX±0.051	chr	DAVID.SU	12/21/05			2P + 24S + 2P												
sheet index				revision	B	B	B	B	appd		JOSEPH.HSIA	12/21/05	projection	1	2	3	4	scale	1:1	product family	PwrBlade	code	213
				sheet	1	2	3	4			size	A	dwg no	51730-120	sheet	1	of	4					

cage code 22526

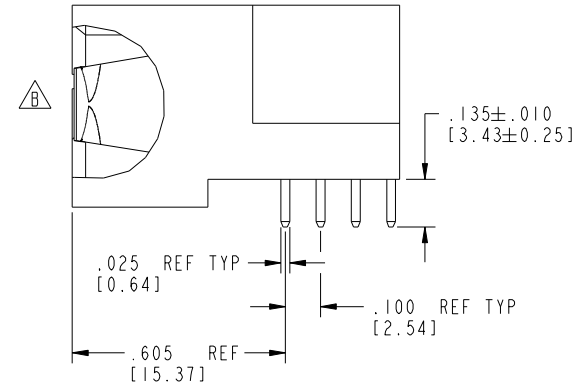
Tous droits strictement réservés. Reproduction ou communication à des tiers interdite sous quelque forme que ce soit sans autorisation écrite du propriétaire. Propriété de c.FCI. Droits de reproduction FCI.

All rights strictly reserved. Reproduction or issue to third parties in any form whatever is not permitted without written authority from the proprietor. Property of FCI. Copyright FCI.

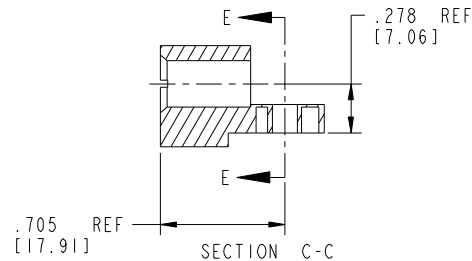
PRODUCT NUMBER
51730-120--
Note: ③



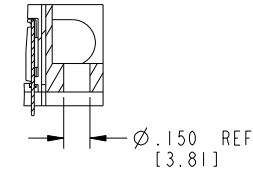
BROKEN-OUT SECTION A-A
SCALE 2:1



BROKEN-OUT SECTION B-B
SCALE 2:1



SECTION C-C



PARTIAL SECTION E-E

mat'l code		SEE NOTE 2		tolerances unless otherwise specified		CUSTOMER		FCI	
ltr	ecn no.	dr	date	linear	.XX±.01/0.X±0.3	COPY		www.fciconnect.com	
B					.XXX±.005/0.XX±0.13	projection		title 2P + 24S + 2P	
				angles	.XXX±.0020/0.XXX±0.051			RIGHT ANGLE SOLDER HEADER	
				dr	0°±2°	INCH/MM		product family PwrBlade code 213	
				enr	RYAN.YUAN 12/21/05	scale 1:1		size dwg no 213	
				chr	SALLY.LUO 01/26/06	A		sheet 2 of 4	
				appd	DAVID.SU 12/21/05			51730-120	
					JOSEPH.HSIA 12/21/05				
sheet index	revision sheet								

cage code 22526

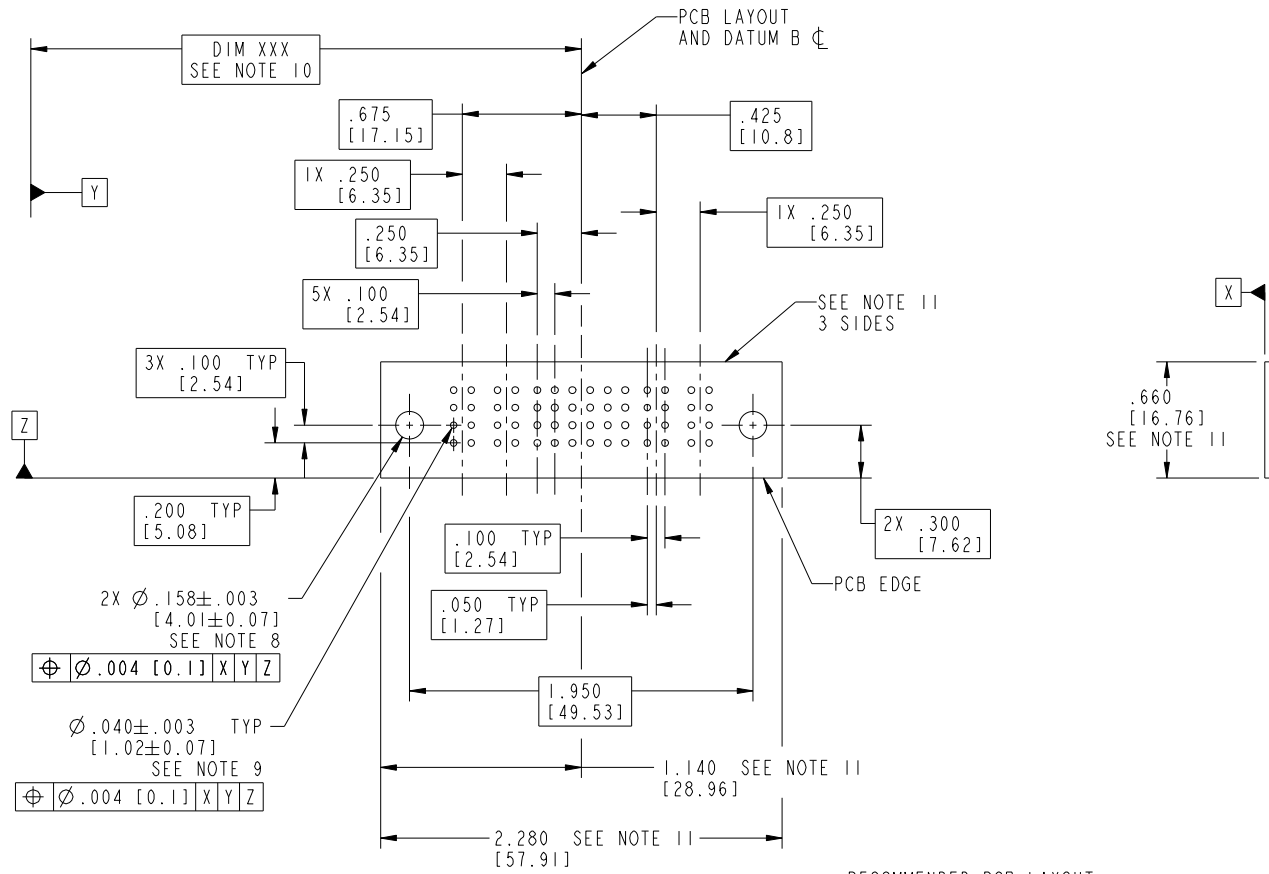
Pro/E

Tous droits strictement réservés. Reproduction ou communication à des tiers interdite sous quelque forme que ce soit sans autorisation écrite du propriétaire. Propriété de c.FCI. Droits de reproduction FCI.



All rights strictly reserved. Reproduction or issue to third parties in any form whatever is not permitted without written authority from the proprietor. Property of FCI. Copyright FCI.

PRODUCT NUMBER
51730-120__
Note: ③



RECOMMENDED PCB LAYOUT

mat'l code		SEE NOTE 2		tolerances unless otherwise specified		CUSTOMER		 www.fciconnect.com	
ltr	ecn no.	dr	date	linear	.XX±.01/0.X±0.3	COPY		title	
B				angles	.XXX±.005/0.XX±0.13	projection		2P + 24S + 2P	
				dr	.XXX±.0020/0.XXX±0.051			RIGHT ANGLE SOLDER HEADER	
				enr	0°±2°	INCH/MM		product family	
				chr	RYAN.YUAN 12/21/05	scale		PwrBlade	
				appd	SALLY.LUO 01/26/06	1:1		code	
					DAVID.SU 12/21/05	A		213	
					JOSEPH.HSIA 12/21/05	51730-120		sheet	
sheet index	revision sheet					3 of 4			

cage code 22526

Tous droits strictement reserves. Reproduction ou communication a des tiers interdite sous quelque forme que ce soit sans autorisation écrite du propriétaire. Propriete de c FCI. Droits de reproduction FCI.



All rights strictly reserved. Reproduction or issue to third parties in any form whatever is not permitted without written authority from the proprietor. Property of FCI. Copyright FCI.

PRODUCT NUMBER
51730-120__
Note: ③

NOTES:

1. DIMENSIONS AND TOLERANCES ARE IN ACCORDANCE WITH ASME Y14.5M, 1994 UNLESS OTHERWISE SPECIFIED.

CONNECTOR NOTES:

2. HOUSING MATERIAL: UL 94 V-0 GLASS FILLED HIGH-TEMP THERMOPLASTIC
POWER CONTACT MATERIAL: COPPER ALLOY
SIGNAL PIN MATERIAL: COPPER ALLOY

⚠ 3. PLATING: SEE ITEM 1 & 2 IN PRINT 10064183 FOR PLATING SPEC OF 51730-120 AND 51730-120LF RESPECTIVELY.

4. MANUFACTURER'S NAME, DATE CODE AND OPTIONAL P/N TO APPEAR ON THIS SURFACE. THE P/N CAN BE OMITTED IF THERE IS NOT ENOUGH SPACE ON THIS SURFACE.

5. PRODUCT SPECIFICATION GS-12-149.
APPLICATION SPECIFICATION BUS-20-067.

6. PACKAGED IN TRAYS.

PCB NOTES:

7. ALL HOLE DIAMETERS ARE FINISHED HOLE SIZE.

8. MOUNTING HOLES, WHERE APPLICABLE, ARE UNPLATED.

9. $\varnothing .0453 \pm .0010$ [1.151 \pm 0.025] DRILLED HOLES PLATED WITH
.0003 [0.008] MIN SnPb OVER .001 [0.03]
TO .003 [0.08] Cu PLATING TO ACHIEVE
 $\varnothing .040 \pm .003$ [1.02 \pm .07] HOLE.

10. "DIM XXX" TO BE DETERMINED BY THE CUSTOMER.

11. CONNECTOR KEEP-OUT ZONE.

mat'l code				SEE NOTE 2		tolerances unless otherwise specified		CUSTOMER		FCI		www.fciconnect.com		
ltr	ecr no.	dr	date	linear	.XX±.01/0.X±0.3		COPY		projection	title				
B					.XXX±.005/0.XX±0.13		INCH/MM			2P + 24S + 2P				
				angles	.XXX±.0020/0.XXX±0.051		1:1		RIGHT ANGLE SOLDER HEADER					
					0°±2°		scale		product family		PwrBlade		code	
				dr	RYAN.YUAN	12/21/05	A		size		dwg no		213	
				enr	SALLY.LUO	01/26/06	A		51730-120		sheet		4 of 4	
				chr	DAVID.SU	12/21/05	A		51730-120		sheet		4 of 4	
				appd	JOSEPH.HSIA	12/21/05	A		51730-120		sheet		4 of 4	
sheet index		revision sheet												

cage code 22526

Pro/E