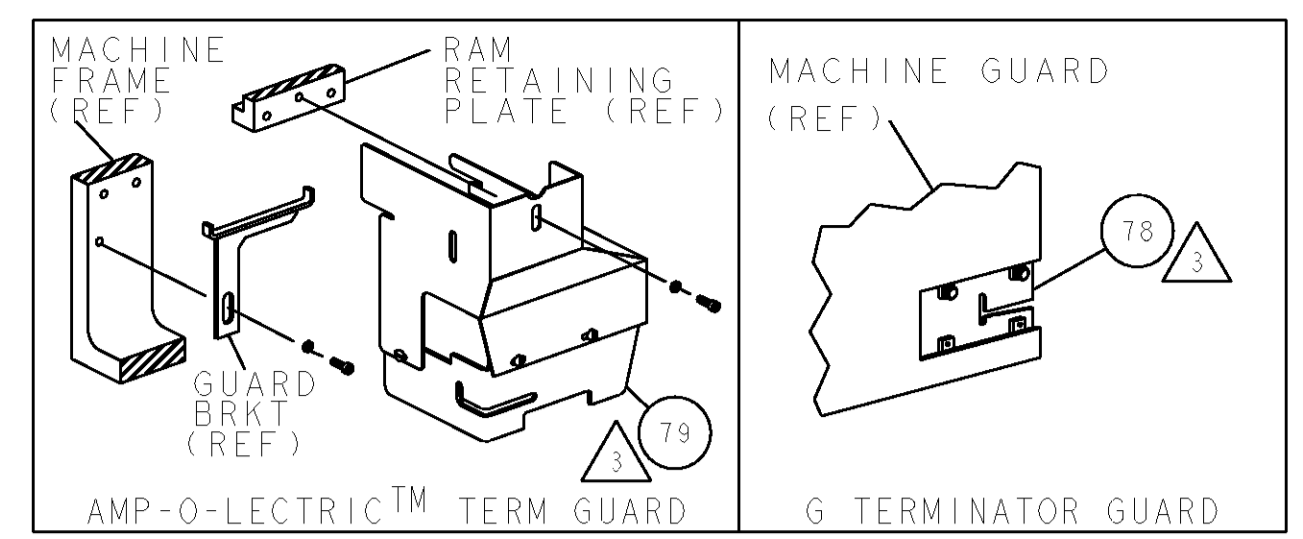


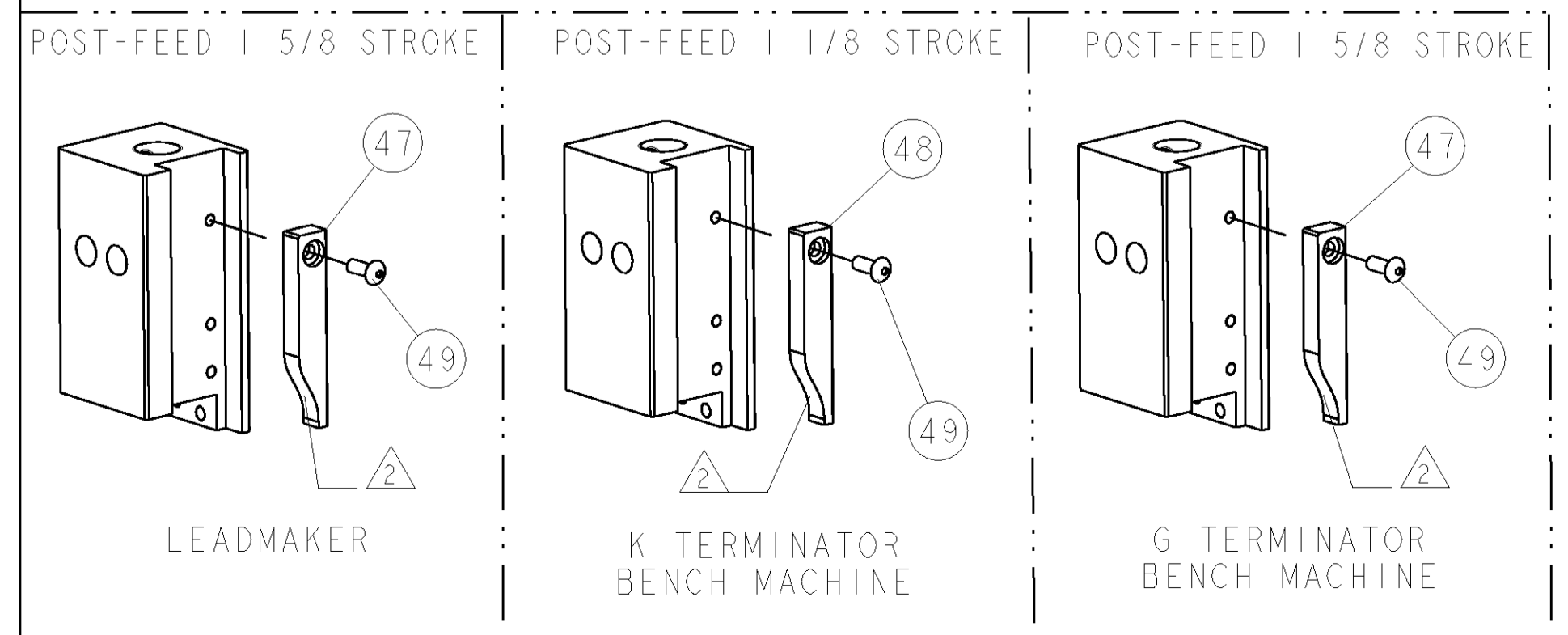
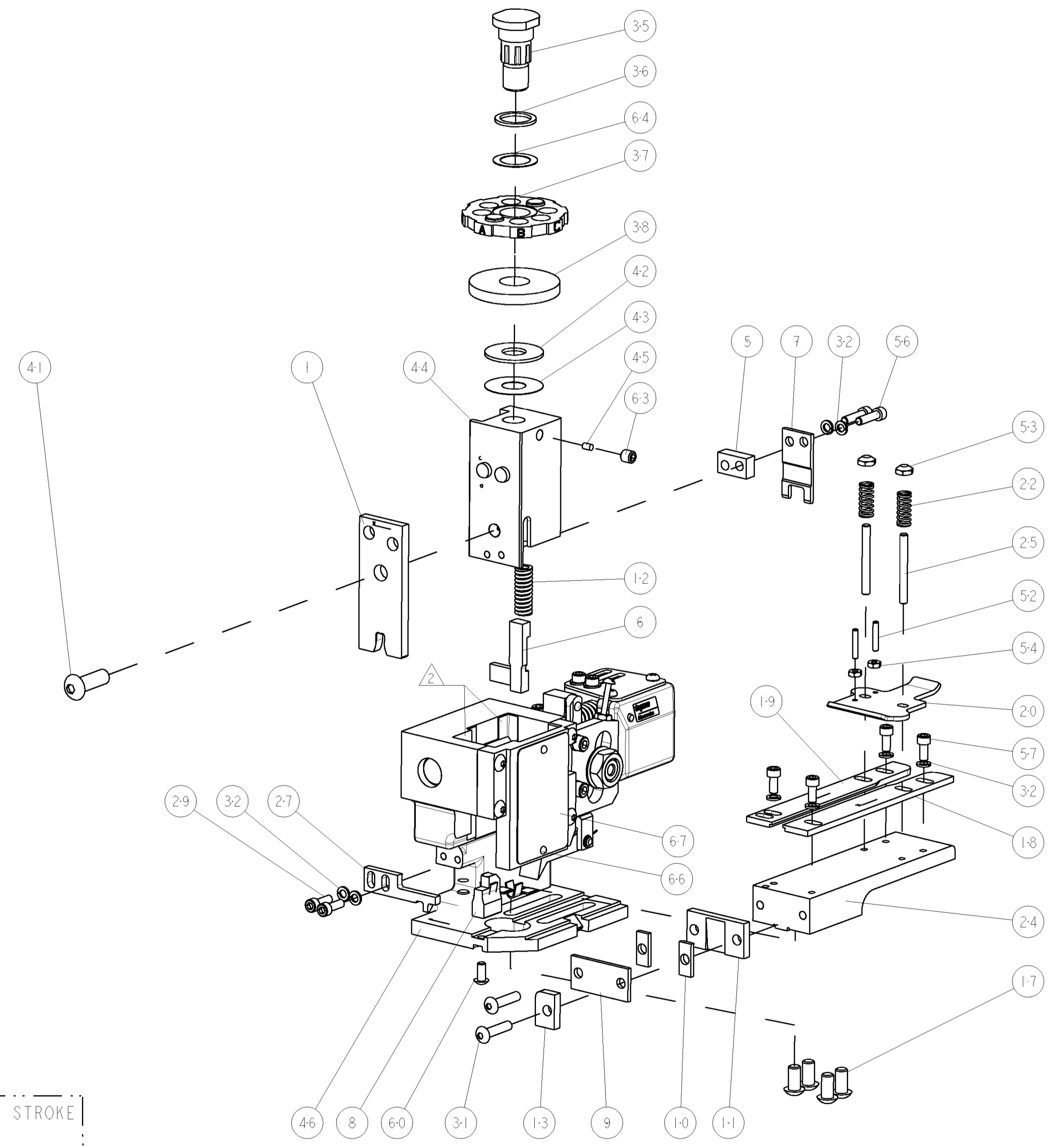
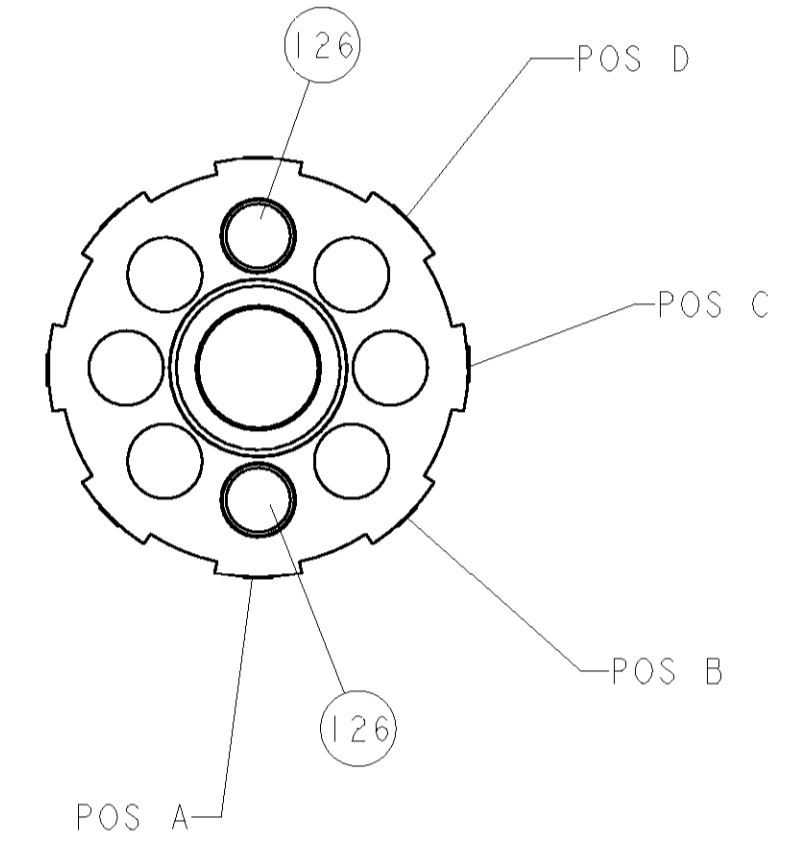
THIS DRAWING IS UNPUBLISHED.		RELEASED FOR PUBLICATION		
COPYRIGHT 20 BY TYCO ELECTRONICS CORPORATION. ALL RIGHTS RESERVED.				
PART NUMBER	REV	FIRST USED	POWER UNIT	FEED TYPE
1852288-1	B	122500-1	LEADMAKER & BENCH MODEL G	POST FEED
1852288-2	B	565435-5	BENCH MODEL K	POST FEED
7-1852288-7	A	-	SPARE PARTS	-

- △ RECOMMENDED SPARE PARTS
- △ GREASE LIGHTLY
- △ GUARD MUST BE IN PLACE WHEN OPERATING APPLICATOR IN A BENCH MACHINE
- △ Ø .140 NICKEL PLATED, LOW CARBON STEEL WIRE.



TERMINAL NAME: TAB, FASTON, .250 SERIES					
TYCO PN	-	AMP TERMINAL - AMP CRIMP SPECS			
1742353-1	-				
1742572-1	-	PAD LTR	CRIMP HEIGHT	WIRE SIZE	
-	-	A	.150±.002[3.81±0.05mm]	Ø.14 △	
-	-	B	-	-	
-	-	C	-	-	
-	-	D	-	-	
-	-	CRIMP	SIZE	TYPE	RANGE
-	-	WIRE	.210 [5.33mm]	F	8-7 AWG
-	-	INSUL	-	-	-
WIRE STRIP LENGTH	TERM APPL SPEC	FEED	APPL INSTRUCTIONS	SET UP GAGE	
.243 -.258	NONE	.845	408-8039	458638-1	

LOC	DIST	REVISIONS			
A	66	P LTR	DESCRIPTION	DATE	BY
		A	RELEASED	11OCT2006	BH
		B	ECR-07-014988	29JUN2007	MY



△	2	2	-	8-354778-7	PIN, WIRE DISC, .2930	126
△	-	REF	-	455745-1	GUARD WINDOW	79
△	-	REF	-	679532-1	INSERT, GUARD	78
	-	1	-	217238-1	GENERAL INSTRUCTION PKG	72
	-	1	-	4088039	EF APPL INST 408-8039	71
	-	1	-	461264-1	PLATE, IDENTIFICATION	67
	-	2	-	21017-2	SCREW, DRIVE	66
	-	1	-	986950-1	WASHER, FLAT PRECISION	64
	-	1	-	21009-2	SCR, SET, SELF LOCKING 1/4-20 X .250	63
	-	1	-	22733-8	SCR, BHSC, SELF-LOCKING, 8-32 X .375	60
	-	4	-	2-21000-6	SCR, SKT HD CAP 8-32 X .375	57
	-	2	-	2-21000-8	SCR, SKT HD CAP 8-32 X .625	56
	-	2	-	21018-4	NUT, HEX, REG 4-40	54
	-	2	-	21022-2	NUT, LOCK, HEX, TORQUE, 8-32	53
	-	2	-	2-21006-6	SCR, SET, CUP POINT 4-40 X .625	52
	-	1	-	1-21002-7	SCR, BTN SKT CAP 6-32 X .375	49
	-	1	-	690501-3	CAM, POST FEED, 1 1/8	48
	-	1	-	690501-4	CAM, POST FEED, 1 5/8	47
	-	1	-	458980-2	SUB ASSY, APPLICATOR FRAME	46
	-	1	-	690191-1	PLUG, NYLON	45
	-	1	-	455674-1	RAM	44
	-	1	-	690125-1	SHIM SUB-ASSY	43
	-	1	-	690124-5	WASHER, RAM (.062)	42
	-	1	-	7-21002-9	SCR, BTN SKT HD CAP 5/16-24 X 1.00	41
	-	1	-	690223-1	SPACER, INS.	38
	-	1	-	354777-1	WIRE DISC, ASSEMBLY	37
	-	1	-	22480-5	SPRING, COMPRESSION	36
	-	1	-	690212-1	POST, RAM	35
	-	8	-	21024-4	WASHER, SPRG LOCK, REG NO 8	32
	-	2	-	3-21002-0	SCR, BTN SKT HD CAP 10-32 X .875	31
	-	2	-	2-21000-7	SCR, SKT HD CAP 8-32 X .500	29
	-	1	-	1633499-2	STRIPPER	27
	-	2	-	22354-8	STUD, THREADED	25
	-	1	-	455678-1	PLATE, STRIP GUIDE	24
	-	2	-	4-22281-1	SPRING, DRAG	22
	-	1	-	454177-1	DRAG	20
	-	1	-	458030-4	STRIP GUIDE, REAR	19
	-	1	-	458031-4	STRIP GUIDE, FRONT	18
	-	4	-	3-21002-3	SCR, BTN SKT HD CAP 1/4-20 X .500	17
	-	1	-	690481-2	SPACER, HOLD DOWN	13
	-	1	-	23846-1	SPRING, DIE	12
△	-	1	-	240644-1	PLATE, REAR SHEAR	11
△	-	2	-	1-240645-0	SPACER, SHEAR PLATE	10
△	-	1	-	2-240642-4	PLATE, FRONT SHEAR	9
△	-	1	-	1633279-4	ANVIL, COMBINATION	8
△	-	1	-	1-240651-6	BLADE, SLUG	7
△	-	1	-	3-455892-4	HOLD DOWN, TERMINAL	6
△	-	1	-	2-240641-2	SPACER	5
△	-	1	-	456430-8	CRIMPER, WIRE	1

-77 -2 -1 U/M PART NO		DESCRIPTION		ITEM NO	
<small>THIS DRAWING IS CHANGED AND THE CHANGES ARE IDENTIFIED BY THE ORGANIZATION WHICH IS CONTACTED FOR THE CHANGES.</small>					
DIMENSIONS: INCHES 		TOLERANCES UNLESS OTHERWISE SPECIFIED: 0 PLC ±.01 1 PLC ±0.01 2 PLC ±0.01 3 PLC ±0.001 4 PLC ±0.001 ANGLES ±.001		DWG: B. HIGMAN 14JUN2006 CHK: B. HIGMAN 14JUN2006 APD: J. ELBIN 14JUN2006 NAME: END FEED HDM APPLICATOR PRODUCT SPEC: - APPLICATION SPEC: - NONE WEIGHT: - CUSTOMER DRAWING	Tyco Electronics Harrisburg, PA 17105-3608 SCALE: 3:5 SHEET: 1 OF 1 REV: B

CUSTOMER VIEWABLE ASSEMBLY