

4

3

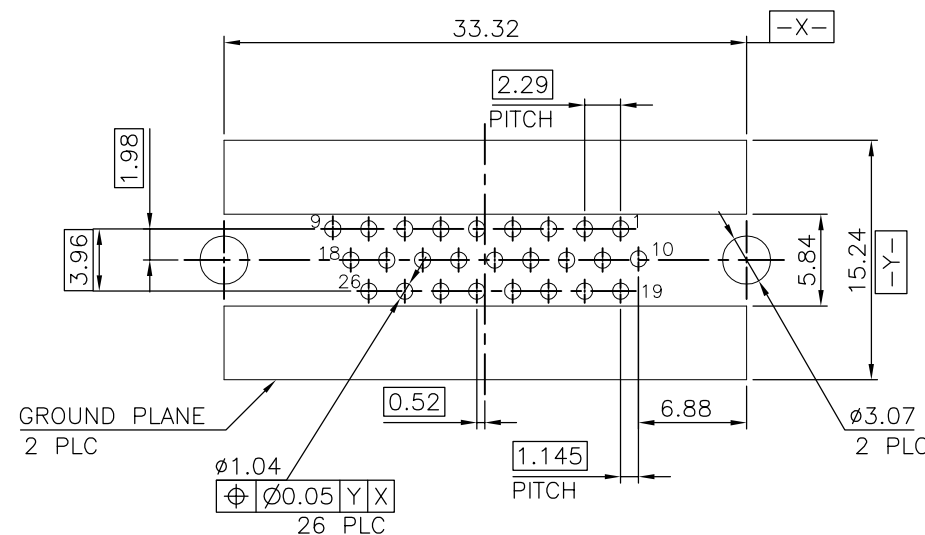
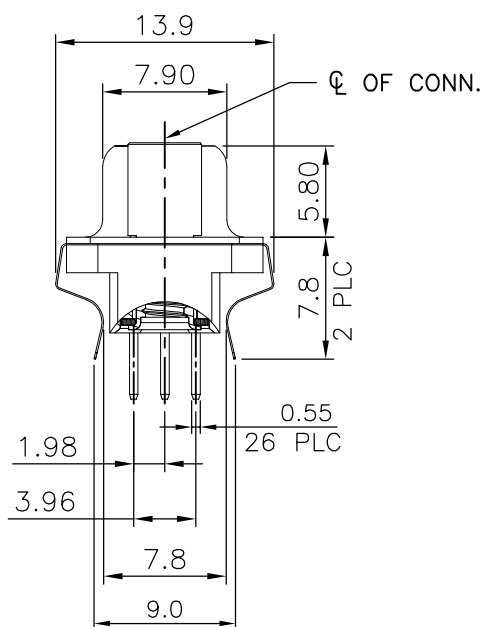
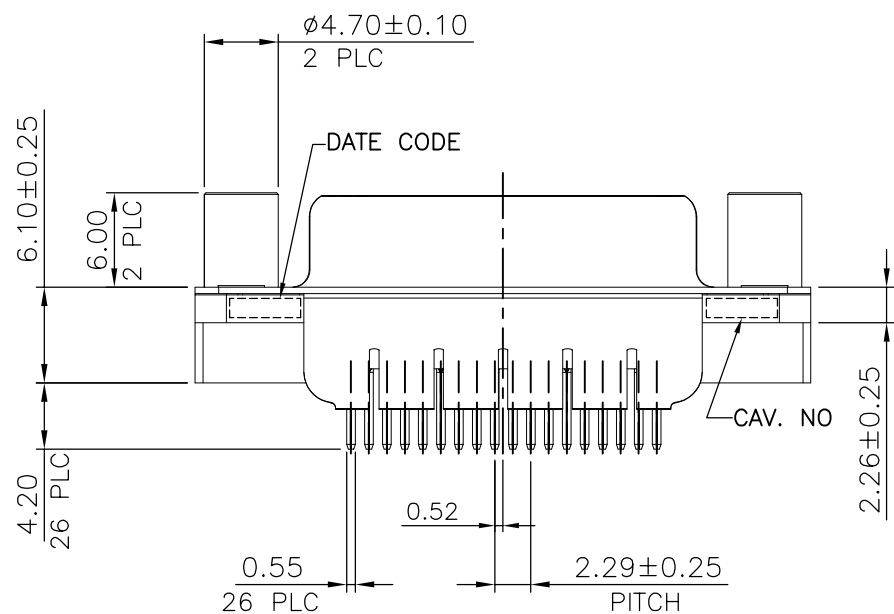
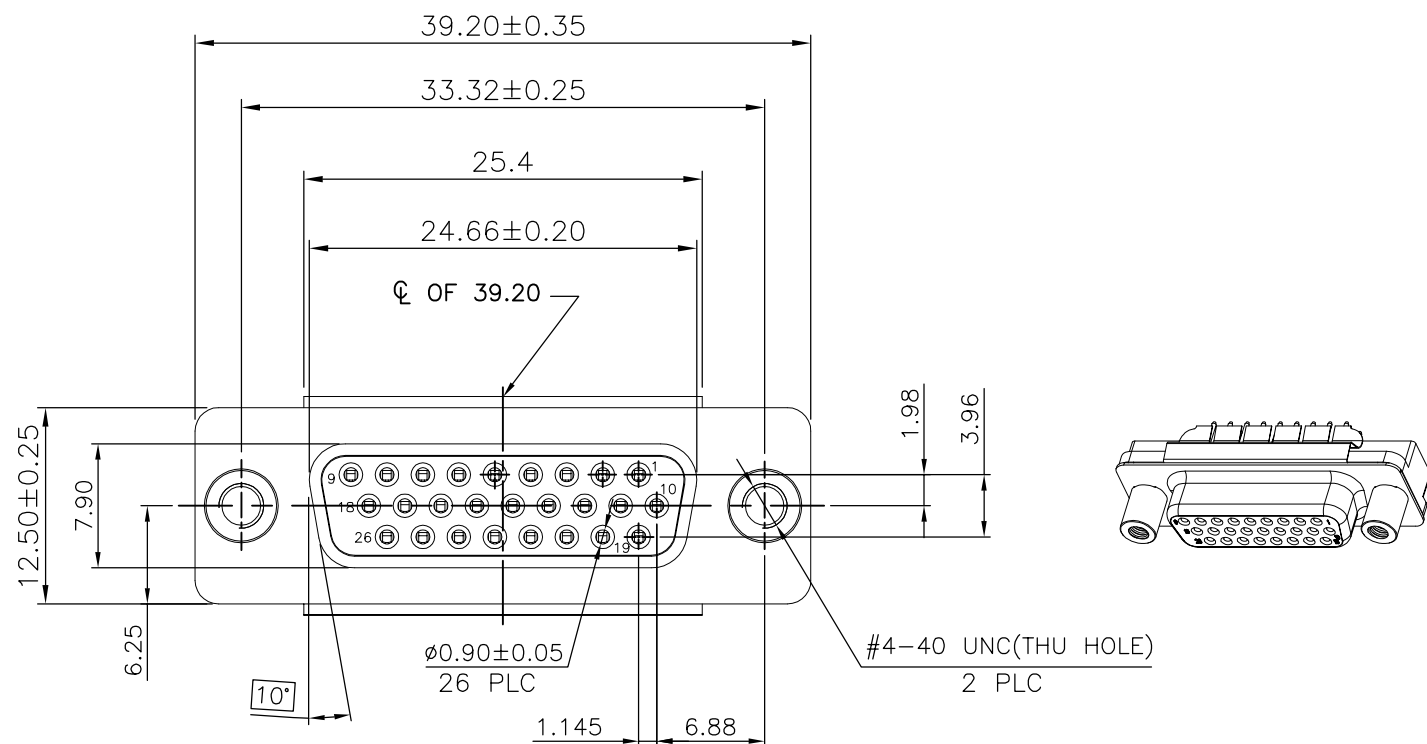
2

1

THIS DRAWING IS UNPUBLISHED. RELEASED FOR PUBLICATION
 © COPYRIGHT BY TYCO ELECTRONICS CORPORATION. ALL RIGHTS RESERVED.

LOC	DIST	REVISIONS					
		P	LTR	DESCRIPTION	DATE	DWN	APVD
DW	-		A2	REVISED PER ECO-15-011151	14DEC2015	AP	DG

- NOTE:
- MATERIAL:
 HOUSING: PBT WITH 30% GF POLYESTER, UL 94V-0, BLACK COLOR.
 CONTACTS: PHOSPHOR BRONZE.
 SHELL: STEEL.
 GROUND PLATE: STAINLESS STEEL SHEET.
 NUT: BRASS.
 WASHER: BRASS.
 - FINISH:
 CONTACTS:
 GOLD PLATING IN CONTACT AREA (SEE TABLE),
 3.04um [120u"] MIN. MATTE-TIN ON SOLDER TAIL, WITH ENTIRE CONTACT UNDERPLATED
 1.27um [50u"] MIN. NICKEL.
 SHELL: 1.27um [50u"] MIN. NICKEL OVER ALL.
 NUT: 1.27um [50u"] MIN. NICKEL OVER ALL.
 WASHER: 1.27um [50u"] MIN. NICKEL OVER ALL.
 - WAVE SOLDER CAPABLE TO 265°C PER TE TEST SPEC. 109-202, CONDITION B.
 - OBsolete PARTS: OBSOLETE CIS STREAMLINING PER D.RENAUD/D.SINISI.
 - SCREWLOCKS TO BE CAPABLE OF ACCEPTING #4-40 UNC-2A SCREWS WHEN THREADED INTO THE TOP AND BOTTOM OF THE SCREWLOCKS.
 - DATE CODE: XX XX
 YEAR WEEK



TOLERANCE: ±0.05
 RECOMMENDED PCB LAYOUT
 (TOP VIEW)

⚠	GOLD FLASH	5786073-4	
	OBSOLETE	15u"	5786073-3
	OBSOLETE	30u"	5786073-1
	FINISH	PART NO.	

THIS DRAWING IS A CONTROLLED DOCUMENT.		DWN	B. MCMASTER	22SEP2005		TE Connectivity NAME D-SUB CONNECTOR, VERTICAL 26POS, FEMALE FRONT METAL SHELL	
DIMENSIONS: MM		CHK	S. BOLASH	22SEP2005			
TOLERANCES UNLESS OTHERWISE SPECIFIED:		APVD	M. WALMSLEY	22SEP2005			
0 PLC ± - 1 PLC ± 0.3 2 PLC ± 0.2 3 PLC ± 0.1 4 PLC ± - ANGLES ± 2°		PRODUCT SPEC		NAME			
MATERIAL SEE NOTE		FINISH SEE NOTE		WEIGHT	7.78 GRAMS	SIZE	A3
		CUSTOMER DRAWING		CAGE CODE	00779	DRAWING NO	C=5786073
				RESTRICTED TO	-	SCALE	-
				SHEET	1 OF 2	REV	A2

4

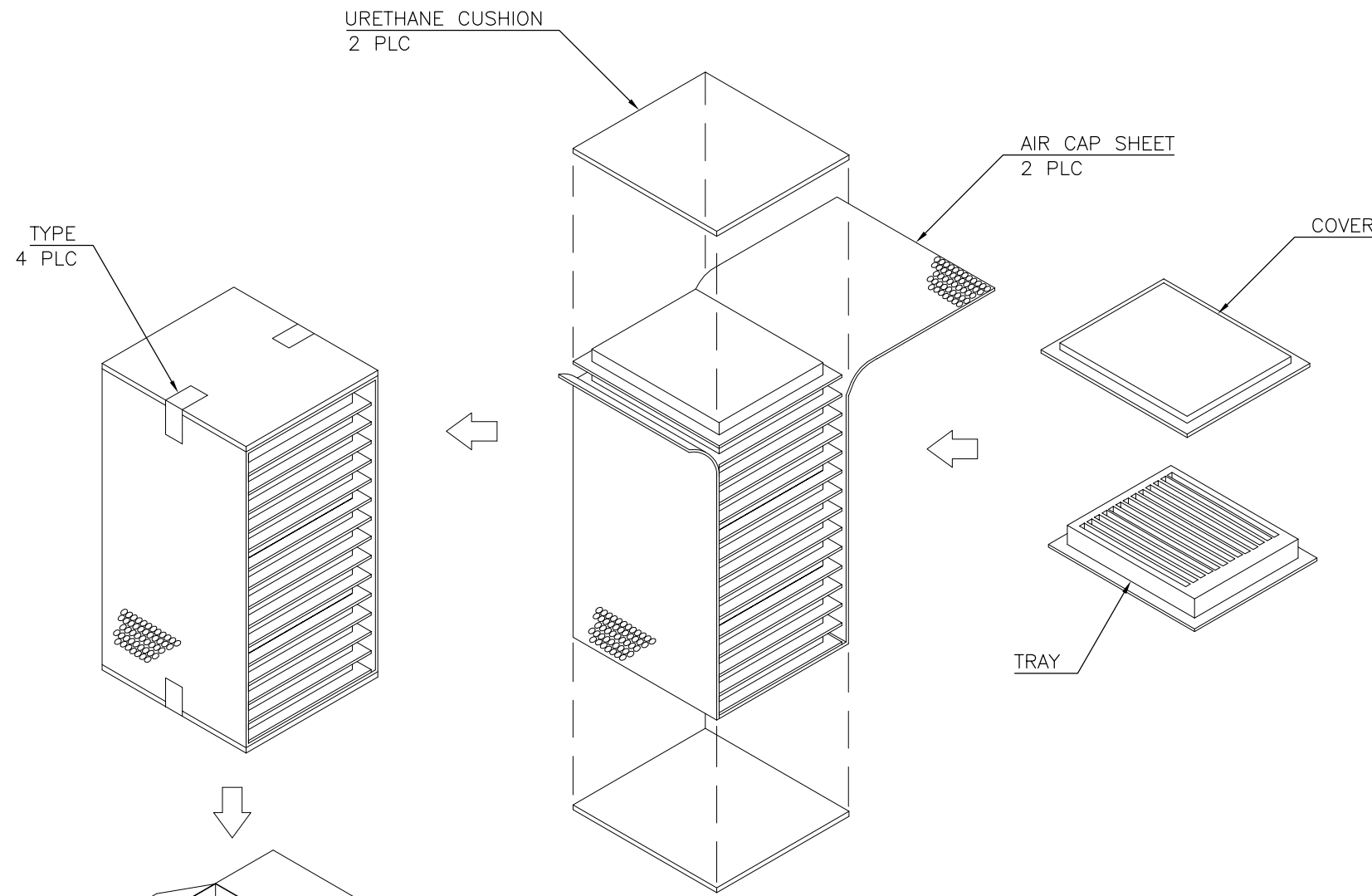
3

2

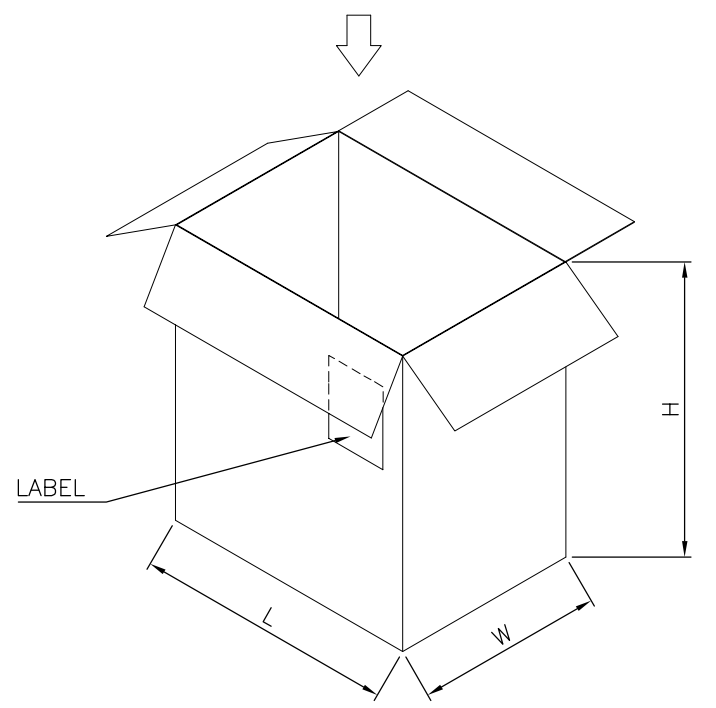
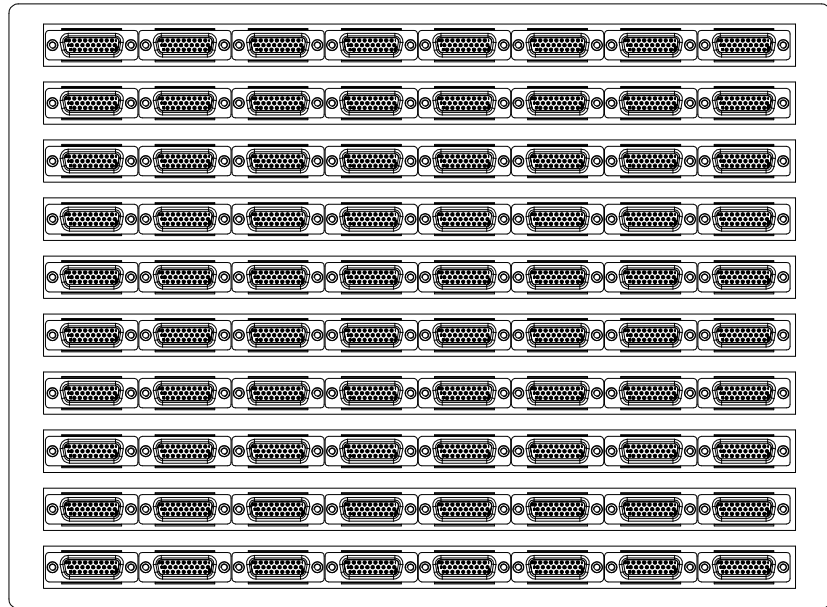
1

THIS DRAWING IS UNPUBLISHED. RELEASED FOR PUBLICATION
 © COPYRIGHT BY TYCO ELECTRONICS CORPORATION. ALL RIGHTS RESERVED.

LOC	DIST	REVISIONS				
P	LTR	DESCRIPTION	DATE	DWN	APVD	
DW	-	SEE SHEET 1.				



NOTE:
 1. MATERIAL:
 TRAY: PVC.
 BOX: CORRUGATED FIBERBOARD.
 2. DIMENSION:
 TRAY: L=345, W=230, H=16.5
 SHIPPING CARTON: L=361, W=245, H=272



9.65Kg	8.30Kg	80	15	1200
GROSS WEIGHT	NET WEIGHT	PCS/TRAY	TRAYS/BOX	PCS/BOX

THIS DRAWING IS A CONTROLLED DOCUMENT.		DWN			
DIMENSIONS: MM		CHK			
		APVD			
TOLERANCES UNLESS OTHERWISE SPECIFIED:		PRODUCT SPEC			
0 PLC ± - 1 PLC ± - 2 PLC ± - 3 PLC ± - 4 PLC ± - ANGLES ± -		APPLICATION SPEC		NAME	
MATERIAL SEE NOTE		WEIGHT		D-SUB CONNECTOR, VERTICAL 26POS, FEMALE FRONT METAL SHELL	
SEE NOTE		CUSTOMER DRAWING		SIZE	RESTRICTED TO
				A3	-
				CAGE CODE	
				00779	
				DRAWING NO	
				C=5786073	
				SCALE	
				-	
				SHEET	
				2 OF 2	
				REV	
				A2	