

THIS DRAWING IS UNPUBLISHED.

RELEASED FOR PUBLICATION

, 19

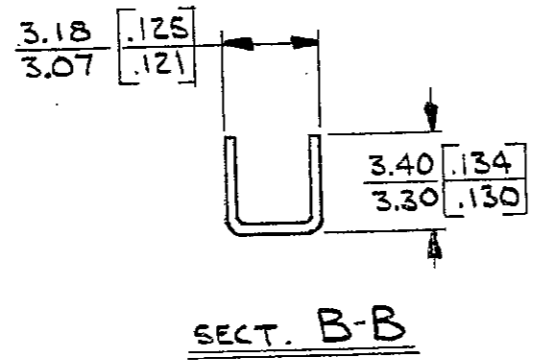
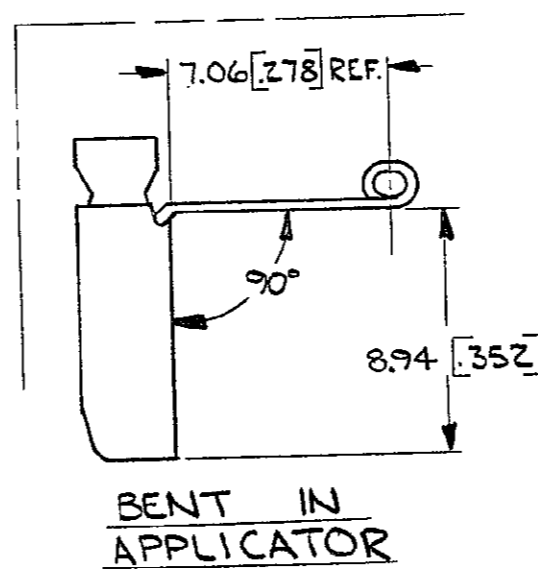
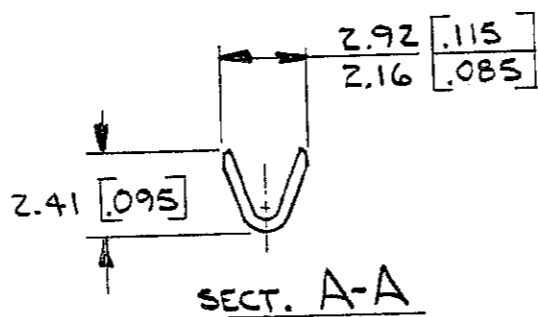
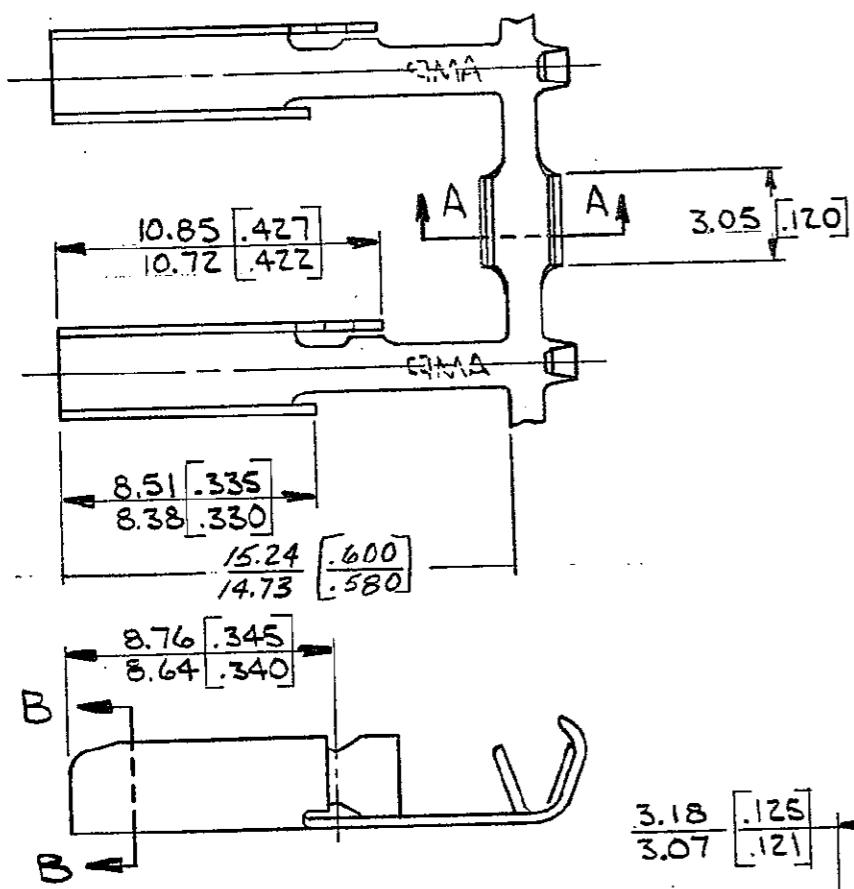
© COPYRIGHT 19

BY AMP INCORPORATED, HARRISBURG, PA. ALL INTERNATIONAL RIGHTS

RESERVED. AMP PRODUCTS MAY BE COVERED BY U.S. AND FOREIGN PATENTS AND/OR PATENTS PENDING.

REVISIONS

REV	ZONE	LTR	DESCRIPTION	DATE	APPROVED
✓	L	A	RELEASED FOR PROG. PER P.A.R	12/21/82	SS/64
✓	✓	B	AMP STAMP AF-0537	9-25-84	RLT/64
✓	✓	C	REVISED PER 0210-0391-97	29/SEP/97	PMF



1. CONTINUOUS STRIP ON REEL WITH TERMINALS LOCATED ON 10.57 [.416] CENTERS.
2. 63257-2 REVERSED REEL.
3. SUFFIX LETTER MUST BE USED ONLY WHEN ORDERING APPLICATOR TOOLING.

1.02-1.78 [.040-.070]	0.3-0.9 #22-18	63257-2R	LEFT HAND	63257-2
		63257-1R	RIGHT HAND	63257-1
INSUL RANGE	WIRE RANGE	TERMINAL No. BENT Δ 3	REMARKS	PART NO
UNLESS OTHERWISE SPECIFIED DIMENSIONS ARE IN INCHES. MM TOLERANCES ON: DECIMALS \pm .025 [.010] ANGLES \pm		CONTRACT NO	AMP AMP INCORPORATED Harrisburg, Pa.	
		11-4-82		
MATERIAL		CHK <i>Yetter</i> 11-5-82	CONTACT	
BRASS 0.30 THK. [.012]		APPD <i>D. Schwan</i> 11-8-82		
FINISH		APPD <i>al. Stanton</i> 11/9/82	NAME	
TIN		DSGN APPD	SIZE	
		OTHER APPD	B	
			FSCM NO	
			00779	
			DRAWING NO	
			63257	
			SCALE	
			11	
			SHEET	

METRIC

CUSTOMER DRAWING

AF 50