

CODE	DIM "M" MATING LENGTH	CONTACT TYPE
PA	[N/A]	POWER
X	[N/A]	OMITTED

spec ref	*	dr	Ruan MT	2015/05/05	projection 	MM ←→	size	A4	scale	1:1
tolerance std	ASME Y14.5	eng	Ruan MT	2015/06/05			ecn no	-		
TOLERANCES UNLESS OTHERWISE SPECIFIED		chr	Fancy Zhang	2015/06/05			rel level	Released		
surface	✓	appr	Pei-Ming Zheng	2015/06/05	product family	PwrBlade	rev	A		
ASME Y14.5	linear	0.X	±0.5	www.fci.com	title	IIACP RIGHT ANGLE STB HEADER	dwg no	51939-970	sheet 1 of 4	
		0.XX	±0.25							
		0.XXX	±0.1							
	angular	0°	±2°	cat. no.	-	Product - Customer Drw				



Copyright FCI.

PrdE File - REV C - 2009-06-09

PRODUCT NUMBER

51939-970LF

A

B

C

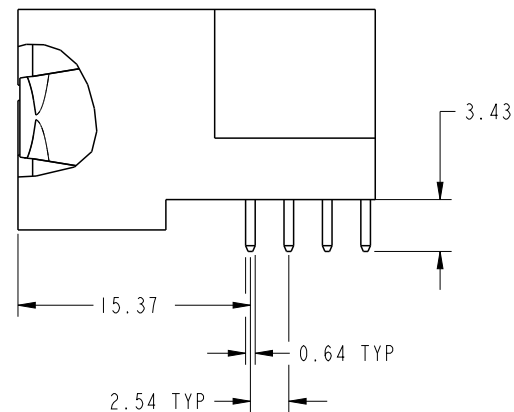
D

A

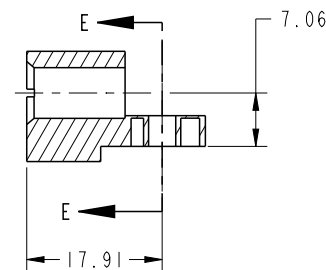
B

C

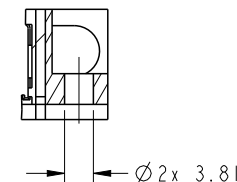
D



BROKEN-OUT SECTION B-B
SCALE 2:1



SECTION C-C



PARTIAL SECTION E-E

dr	Ruan MT	2015/05/05	projection 	MM ←————→	size	A4	scale	1:1	
eng	Ruan MT	2015/06/05			ecn no	-			
chr	Fancy Zhang	2015/06/05			rel level	Released			
appr	Pei-Ming Zheng	2015/06/05	product family	PwrBlade					
		title	IIACP RIGHT ANGLE STB HEADER		dwg no	51939-970		rev	A
www.fci.com		cat. no.	-	Product - Customer Drw			sheet 2 of 4		



Copyright FCI.

PRODUCT NUMBER

51939-970LF

A

B

C

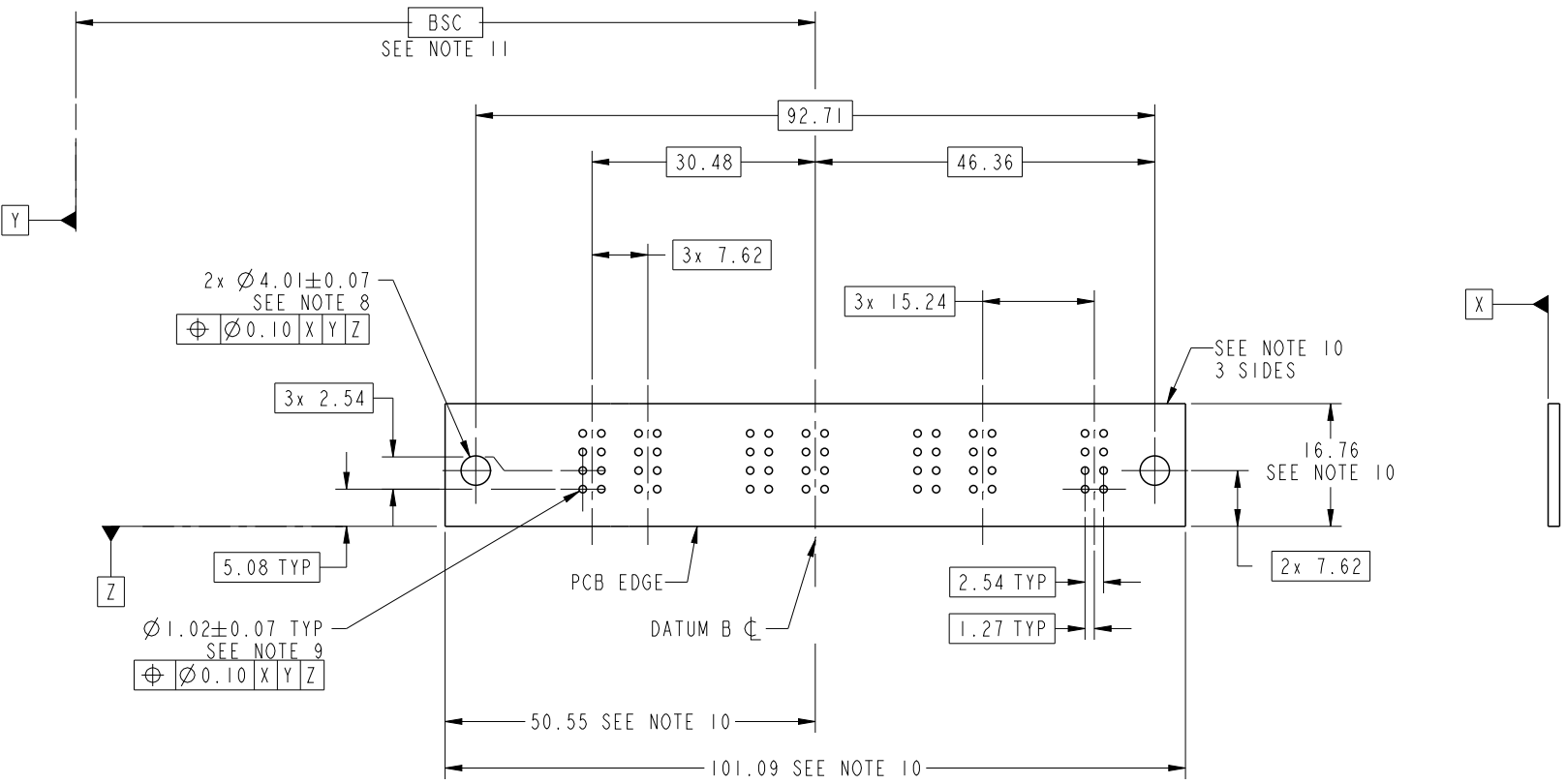
D

A

B

C

D



RECOMMENDED PCB LAYOUT



Copyright FCI.

dr	Ruan MT	2015/05/05	projection 	MM 	size	A4	scale	1:1
eng	Ruan MT	2015/06/05			ecn no	-		
chr	Fancy Zhang	2015/06/05			rel level	Released		
appr	Pei-Ming Zheng	2015/06/05	product family	PwrBlade	rev	A		
		title			dwg no		rev	
www.fci.com		I IACP			51939-970		A	
cat. no.		-			Product - Customer Drw		sheet 3 of 4	
RIGHT ANGLE STB HEADER								

PRODUCT NUMBER

51939-970LF

NOTES:

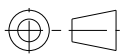
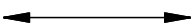

1. DIMENSIONS AND TOLERANCES ARE IN ACCORDANCE WITH ASME Y14.5M, 1994 UNLESS OTHERWISE SPECIFIED.

CONNECTOR NOTES:

- 2. HOUSING MATERIAL: UL 94 V-0 GLASS FILLED HIGH-TEMP THERMOPLASTIC
POWER CONTACT MATERIAL: COPPER ALLOY
SIGNAL PIN MATERIAL: COPPER ALLOY
- 3. SEE FCI PLATING SPEC 10064183.
- 4. MANUFACTURER'S NAME, DATE CODE AND OPTIONAL P/N TO APPEAR ON THIS SURFACE. THE MARK CAN BE OMITTED IF THERE IS NOT ENOUGH SPACE ON THIS SURFACE.
- 5. PRODUCT SPECIFICATION GS-12-149.
APPLICATION SPECIFICATION BUS-20-067.
- 6. PACKAGED IN TRAYS.

PCB NOTES:

- 7. ALL HOLE DIAMETERS ARE FINISHED HOLE SIZE.
- 8. MOUNTING HOLES, WHERE APPLICABLE, ARE UNPLATED.
- 9. $\varnothing 1.151 \pm 0.025$ DRILLED HOLES PLATED WITH
0.008 MIN SnPb OR Sn OVER 0.03
TO 0.08 Cu PLATING TO ACHIEVE
 $\varnothing 1.02 \pm 0.07$ HOLE.
- 10. CONNECTOR KEEP-OUT ZONE.
- 11. DATUM AND BASIC DIMENSIONS ARE ESTABLISHED BY CUSTOMER.

dr	Ruan MT	2015/05/05	projection 	MM 	size	A4	scale	1:1
eng	Ruan MT	2015/06/05			ecn no	-		
chr	Fancy Zhang	2015/06/05			product family	PwrBlade	rel level	Released
appr	Pei-Ming Zheng	2015/06/05			rev	51939-970	A	
		title	IIACP RIGHT ANGLE STB HEADER		cat. no.	-	Product - Customer Drw	sheet 4 of 4



Copyright FCI.