



SAW multimedia filters

Series/Type: **K2966M**

The following products presented in this data sheet are being withdrawn.

Ordering Code	Substitute Product	Date of Withdrawal	Deadline Last Orders	Last Shipments
B39389K2966M100		2011-01-14	2011-09-30	2012-09-30

For further information please contact your nearest EPCOS sales office, which will also support you in selecting a suitable substitute. The addresses of our worldwide sales network are presented at www.epcos.com/sales.

© EPCOS AG 2015. Reproduction, publication and dissemination of this publication, enclosures hereto and the information contained therein without EPCOS' prior express consent is prohibited.

EPCOS AG is a TDK Group Company.

SAW Components
K 2966 M
IF Filter for Intercarrier Applications
38,90 MHz
Data Sheet
Standard

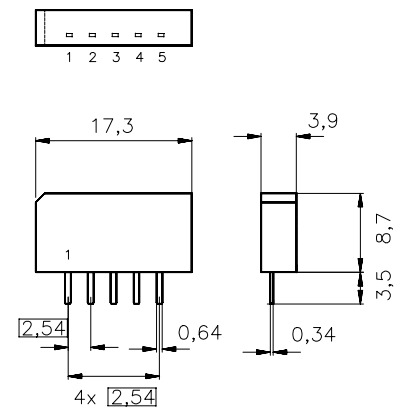
- B/G
- D/K

Features

- TV IF filter with Nyquist slope and sound shelf
- Broad sound shelf for sound carriers at 32,40 MHz and 33,40 MHz
- Group delay predistortion

Terminals

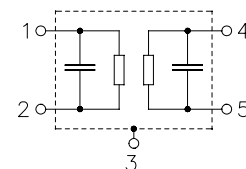
- Tinned CuFe alloy

 Plastic package **SIP5K**


Dimensions in mm, approx. weight 1,0 g

Pin configuration

- | | |
|---|-----------------------|
| 1 | Input |
| 2 | Input - ground |
| 3 | Chip carrier - ground |
| 4 | Output |
| 5 | Output |



Type	Ordering code	Marking and package according to	Packing according to
K 2966 M	B39389-K2966-M100	C61157-A1-A15	F61074-V8067-Z000

Maximum ratings

Operable temperature range	T_A	-25/+65	°C	
Storage temperature range	T_{stg}	-40/+85	°C	
DC voltage	V_{DC}	5	V	between any terminals
AC voltage	V_{pp}	10	V	between any terminals

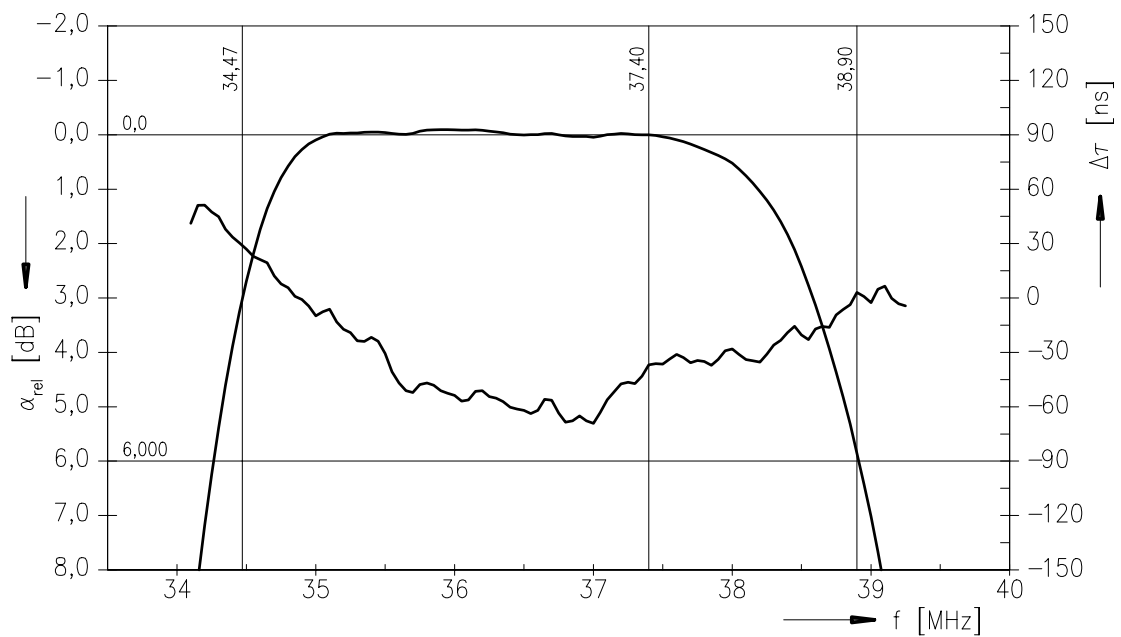
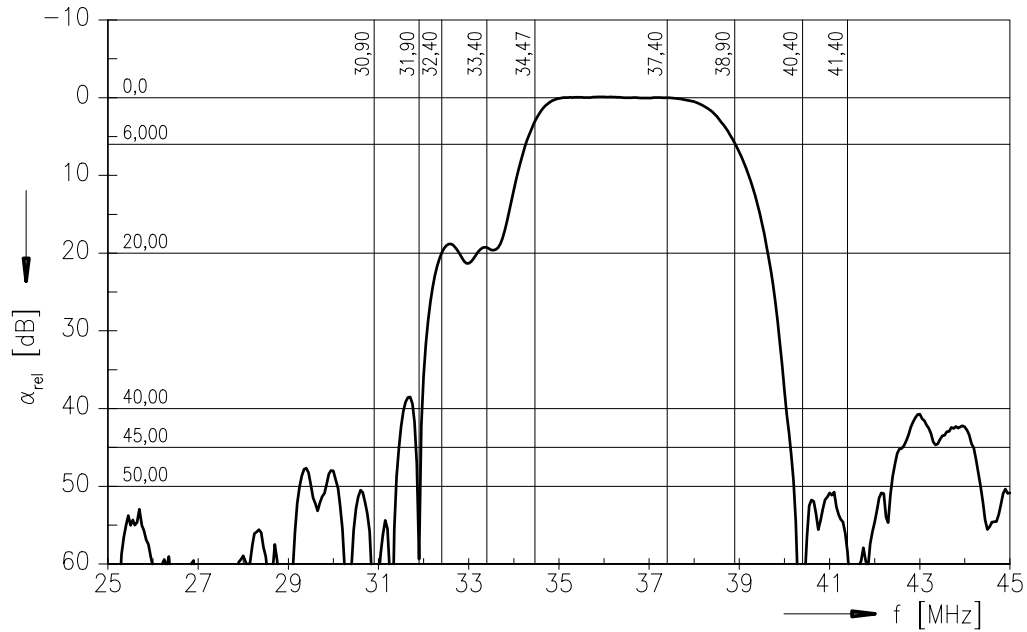
SAW Components
K 2966 M
IF Filter for Intercarrier Applications
38,90 MHz
Data Sheet
Characteristics

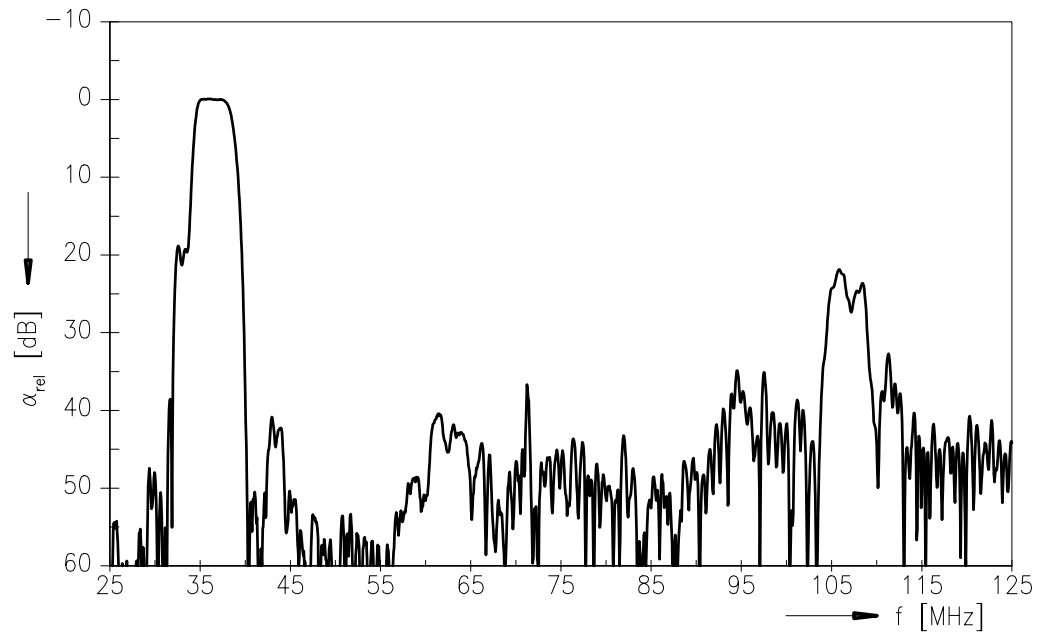
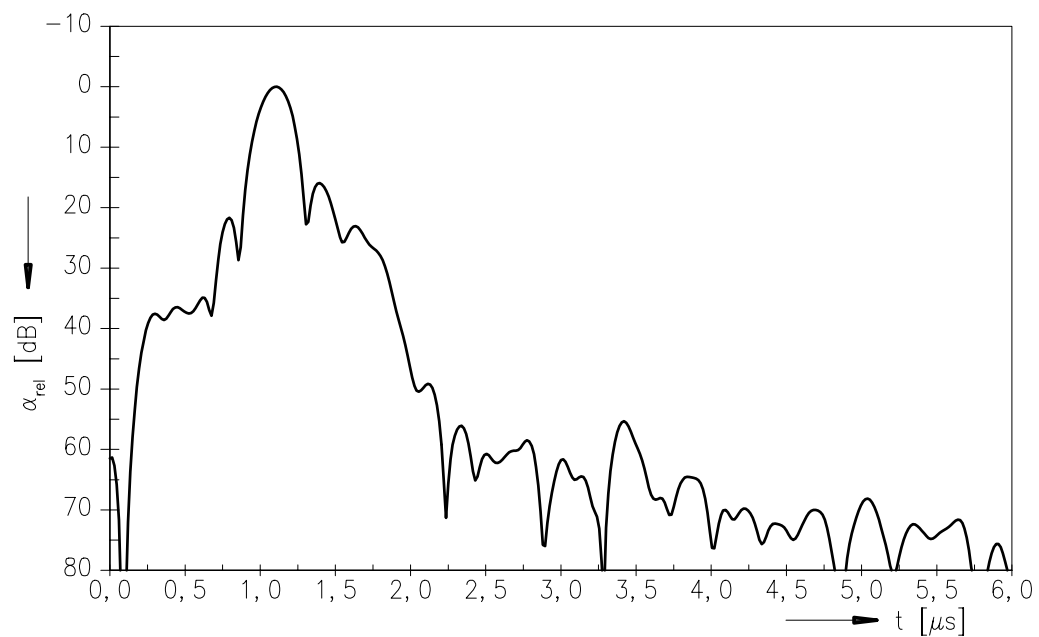
Reference temperature: $T_A = 25\text{ °C}$
 Terminating source impedance: $Z_S = 50\ \Omega$
 Terminating load impedance: $Z_L = 2\text{ k}\Omega \parallel 3\text{ pF}$

		min.	typ.	max.	
Insertion attenuation					
	α				
Reference level for the following data	37,40 MHz	15,7	17,2	18,7	dB
Relative attenuation					
	α_{rel}				
Picture carrier	38,90 MHz	4,6	5,6	6,6	dB
Color carrier	34,47 MHz	2,1	3,1	4,1	dB
Sound carrier	32,40 MHz	18,9	20,4	21,9	dB
	33,40 MHz	17,8	19,3	—	dB
Adjacent picture carrier	30,90 MHz	48,0	62,0	—	dB
	31,90 MHz	40,0	58,0	—	dB
Adjacent sound carrier	40,40 MHz	45,0	58,0	—	dB
	41,40 MHz	44,0	58,0	—	dB
Lower sidelobe	25,00 ... 30,90 MHz	42,0	48,0	—	dB
Upper sidelobe	40,40 ... 45,00 MHz	36,0	42,0	—	dB
Reflected wave signal suppression					
1,2 μ s ... 6,0 μ s after main pulse (test pulse 250 ns, carrier frequency 37,40 MHz)		42,0	54,0	—	dB
Feedthrough signal suppression					
1,2 μ s ... 1,1 μ s before main pulse (test pulse 250 ns, carrier frequency 37,40 MHz)		50,0	56,0	—	dB
Group delay predistortion					
	$\Delta\tau$				
(reference frequency 38,90 MHz)					
	36,90 MHz	—	-55	—	ns
	34,47 MHz	—	45	—	ns
Impedance at 37,40 MHz					
Input: $Z_{IN} = R_{IN} \parallel C_{IN}$		—	2,2 \parallel 11,9	—	k Ω \parallel pF
Output: $Z_{OUT} = R_{OUT} \parallel C_{OUT}$		—	3,3 \parallel 2,8	—	k Ω \parallel pF
Temperature coefficient of frequency					
	TC_f	—	-72	—	ppm/K

Data Sheet

Frequency response



Data Sheet
Frequency response

Time domain response


SAW Components

K 2966 M

IF Filter for Intercarrier Applications

38,90 MHz

Data Sheet

Published by EPCOS AG

Surface Acoustic Wave Components Division, SAW CE MM PD

P.O. Box 80 17 09, D-81617 München

© EPCOS AG 2001. All Rights Reserved.

As far as patents or other rights of third parties are concerned, liability is only assumed for components per se, not for applications, processes and circuits implemented within components or assemblies.

The information describes the type of component and shall not be considered as assured characteristics.

Terms of delivery and rights to change design reserved.

For questions on technology, prices and delivery please contact the sales offices of EPCOS AG or the international representatives.

Due to technical requirements components may contain dangerous substances. For information on the type in question please also contact one of our sales offices.