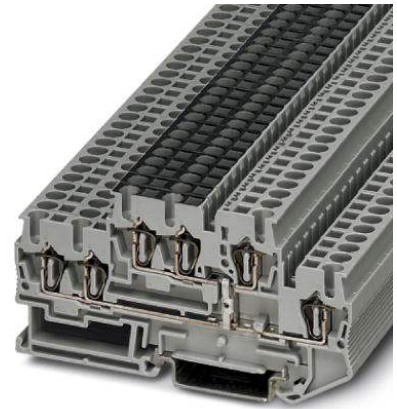


STTB 2,5-TWIN-PV


Order No.: 3038545



<http://eshop.phoenixcontact.de/phoenix/treeViewClick.do?UID=3038545>

Feed-through modular terminal block, Cross section: 0.08 mm² - 4 mm², AWG: 28 - 12, Connection type: Spring-cage connection, Width: 5.2 mm, Color: gray, Mounting type: NS 35/7.5, NS 35/15

Commercial data

| | |
|--------------------------|---|
| GTIN (EAN) |  |
| sales group | A632 |
| Pack | 50 pcs. |
| Customs tariff | 85369010 |
| Catalog page information | Page 97 (CL-2009) |

Product notes

WEEE/RoHS-compliant since:
01/01/2003



<http://www.download.phoenixcontact.com>
Please note that the data given here has been taken from the online catalog. For comprehensive information and data, please refer to the user documentation. The General Terms and Conditions of Use apply to Internet downloads.

Technical data

General

| | |
|-----------------------|------|
| Number of levels | 2 |
| Number of connections | 6 |
| Color | gray |
| Insulating material | PA |

| | |
|------------------------------------|----|
| Inflammability class acc. to UL 94 | V0 |
|------------------------------------|----|

Dimensions

| | |
|------------------|---------|
| Width | 5.2 mm |
| Length | 91.5 mm |
| Height NS 35/7.5 | 47.5 mm |
| Height NS 35/15 | 55 mm |

Technical data

| | |
|----------------------------------|---------------|
| Rated surge voltage | 6 kV |
| Pollution degree | 3 |
| Surge voltage category | III |
| Insulating material group | I |
| Connection in acc. with standard | IEC 60947-7-1 |
| Nominal current I_N | 22 A |
| Nominal voltage U_N | 500 V |

Connection data

| | |
|---|------------------------|
| Conductor cross section solid min. | 0.08 mm ² |
| Conductor cross section solid max. | 4 mm ² |
| Conductor cross section stranded min. | 0.08 mm ² |
| Conductor cross section stranded max. | 2.5 mm ² |
| Conductor cross section AWG/kcmil min. | 28 |
| Conductor cross section AWG/kcmil max | 12 |
| Conductor cross section stranded, with ferrule without plastic sleeve min. | 0.14 mm ² |
| Conductor cross section stranded, with ferrule without plastic sleeve max. | 2.5 mm ² |
| Conductor cross section stranded, with ferrule with plastic sleeve min. | 0.14 mm ² |
| Conductor cross section stranded, with ferrule with plastic sleeve max. | 2.5 mm ² |
| 2 conductors with same cross section, stranded, TWIN ferrules with plastic sleeve, max. | 0.5 mm ² |
| Type of connection | Spring-cage connection |
| Stripping length | 10 mm |

Certificates / Approvals



Certification

BV, CB, CSA, CUL, GL, KR, LR, NK, UL, VDE-PZI

Accessories

| Item | Designation | Description |
|-----------------|-----------------------------|--|
| Assembly | | |
| 3030747 | ATP-STTB 4 | Partition plate, Length: 88.7 mm, Width: 2 mm, Height: 53 mm, Color: gray |
| 3022218 | CLIPFIX 35 | Snap-on end bracket, for 35 mm NS 35/7.5 or NS 35/15 DIN rail, can be fitted with Zack strip ZB 8 and ZB 8/27, terminal strip marker KLM 2 and KLM, width: 9.5 mm, color: gray |
| 3022276 | CLIPFIX 35-5 | Snap-on end bracket, for NS 35/7.5 or NS 35/15 DIN rail, can be fitted with Zack strip ZB 5 and ZBF 5, terminal strip marker KLM 2 and KLM, parking facility for FBS...5, FBS...6, KSS 5, KSS 6, width: 5,15 mm, color: gray |
| 3038558 | D-STTB 2,5-TWIN | End cover, Length: 91.5 mm, Width: 2.2 mm, Height: 47.5 mm, Color: gray |
| 1201442 | E/UK | End clamp, for assembly on NS 32 or NS 35/7.5 DIN rail |
| 0801762 | NS 35/ 7,5 CU UNPERF 2000MM | DIN rail, material: Copper, unperforated, height 7.5 mm, width 35 mm, length: 2 m |
| 0801733 | NS 35/ 7,5 PERF 2000MM | DIN rail, material: Steel, galvanized and passivated with a thick layer, perforated, height 7.5 mm, width 35 mm, length: 2 m |
| 0801681 | NS 35/ 7,5 UNPERF 2000MM | DIN rail, material: Steel, unperforated, height 7.5 mm, width 35 mm, length: 2 m |
| 1201756 | NS 35/15 AL UNPERF 2000MM | DIN rail, deep-drawn, high profile, unperforated, 1.5 mm thick, material: Aluminum, height 15 mm, width 35 mm, length 2 m |
| 1201895 | NS 35/15 CU UNPERF 2000MM | DIN rail, material: Copper, unperforated, 1.5 mm thick, height 15 mm, width 35 mm, length: 2 m |
| 1201730 | NS 35/15 PERF 2000MM | DIN rail, material: Steel, perforated, height 15 mm, width 35 mm, length: 2 m |
| 1201714 | NS 35/15 UNPERF 2000MM | DIN rail, material: Steel, unperforated, height 15 mm, width 35 mm, length: 2 m |
| 1201798 | NS 35/15-2,3 UNPERF 2000MM | DIN rail, material: Steel, unperforated, 2.3 mm thick, height 15 mm, width 35 mm, length: 2 m |

Bridges

| | | |
|---------|----------|---|
| 3030161 | FBS 2-5 | Plug-in bridge, Number of positions: 2, Color: red |
| 3030174 | FBS 3-5 | Plug-in bridge, Number of positions: 3, Color: red |
| 3030187 | FBS 4-5 | Plug-in bridge, Number of positions: 4, Color: red |
| 3030190 | FBS 5-5 | Plug-in bridge, Number of positions: 5, Color: red |
| 3030213 | FBS 10-5 | Plug-in bridge, Number of positions: 10, Color: red |
| 3030226 | FBS 20-5 | Plug-in bridge, Number of positions: 20, Color: red |
| 3038930 | FBS 50-5 | Plug-in bridge, Number of positions: 50, Color: red |

Marking

| | | |
|---------|------------------------|--|
| 1051993 | B-STIFT | Marker pen, for manual labeling of unprinted Zack strips, smear-proof and waterproof, line thickness 0.5 mm |
| 0800967 | STP 5-2 | Double marker carrier, snaps onto the double-level spring-cage terminal block STTB 2.5 and STTB 4, labeled with ZB 5 or ZBF 5 |
| 3030941 | WST 2,5 | Warning cover, 5-pos., for terminal width: 5.2 mm |
| 0811228 | X-PEN 0,35 | Marker pen without ink cartridge, for manual labeling of markers, labeling extremely wipe-proof, line thickness 0.35 mm |
| 0808671 | ZBF 5,LGS:FORTL.ZAHLEN | Zack marker strip, flat, printed horizontally: 10-section, with the numbers 1 - 10, 11 - 20, and so on up to 491 - 500, color: white |
| 0808642 | ZBF 5:UNBEDRUCKT | Zack strip, flat, unprinted: 10-section, for individual labeling with M-PEN or ZBF-T, sufficient for 100 terminal blocks, color: white |

Plug/Adapter

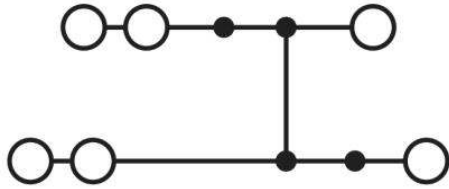
| | | |
|---------|-------------|--------------------------------------|
| 3002843 | ISH 2,5/0,2 | Insulation stop sleeve, Color: white |
| 3002856 | ISH 2,5/0,5 | Insulation stop sleeve, Color: gray |
| 3002869 | ISH 2,5/1,0 | Insulation stop sleeve, Color: black |
| 3030925 | PAI-4 | Test adapter, Color: gray |
| 3030983 | PS-5 | Test adapter, Color: red |

Tools

| | | |
|---------|---------------|---|
| 1204517 | SZF 1-0,6X3,5 | Actuation tool, for ST terminal blocks, also suitable for use as a bladed screwdriver, size: 0.6 x 3.5 x 100 mm, 2-component grip, with non-slip grip |
|---------|---------------|---|

Diagrams/Drawings

Circuit diagram



Address

PHOENIX CONTACT Deutschland GmbH
Flachmarktstr. 8
32825 Blomberg, Germany
Phone +49 5235 3 12000
Fax +49 5235 3 41200
<http://www.phoenixcontact.de>



© 2011 Phoenix Contact
Technical modifications reserved;