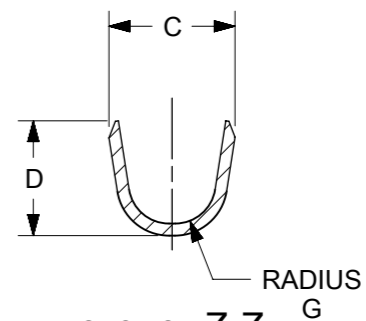
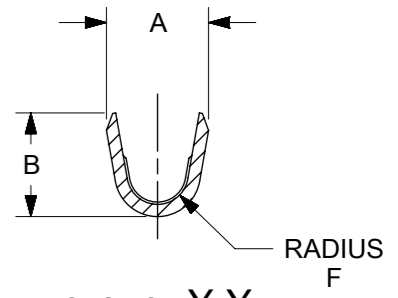


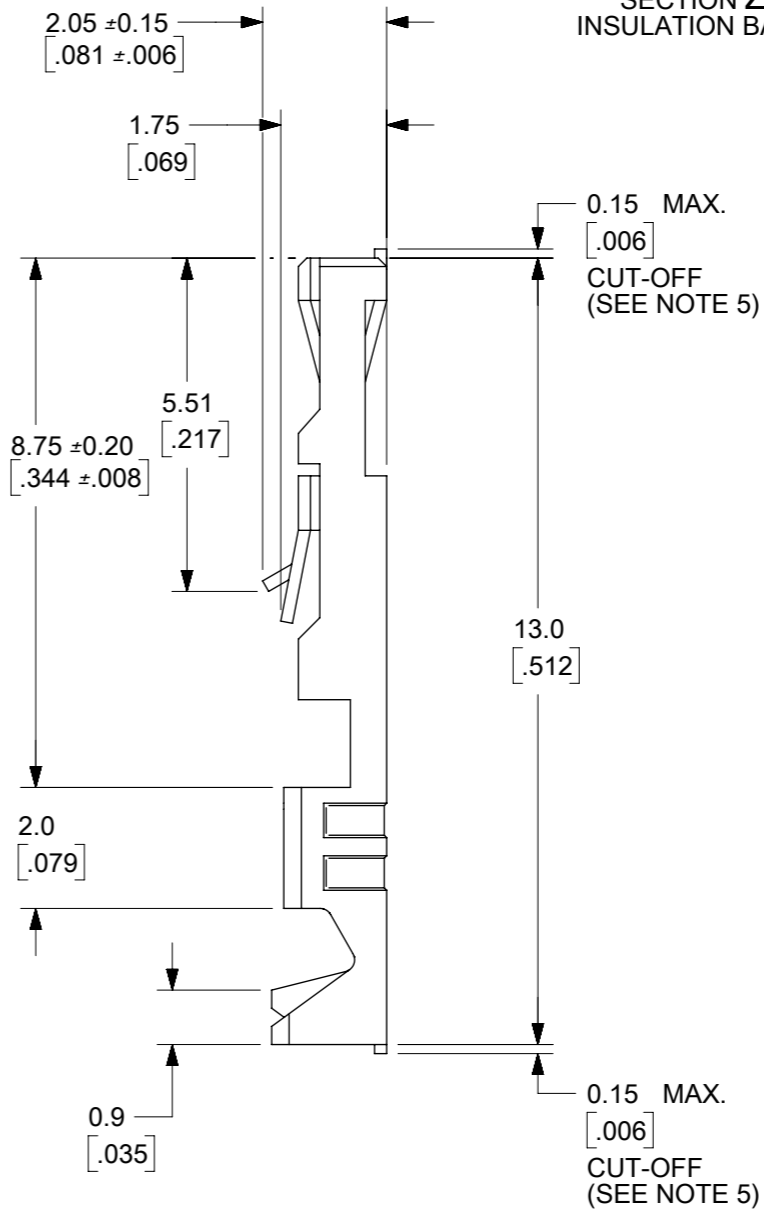
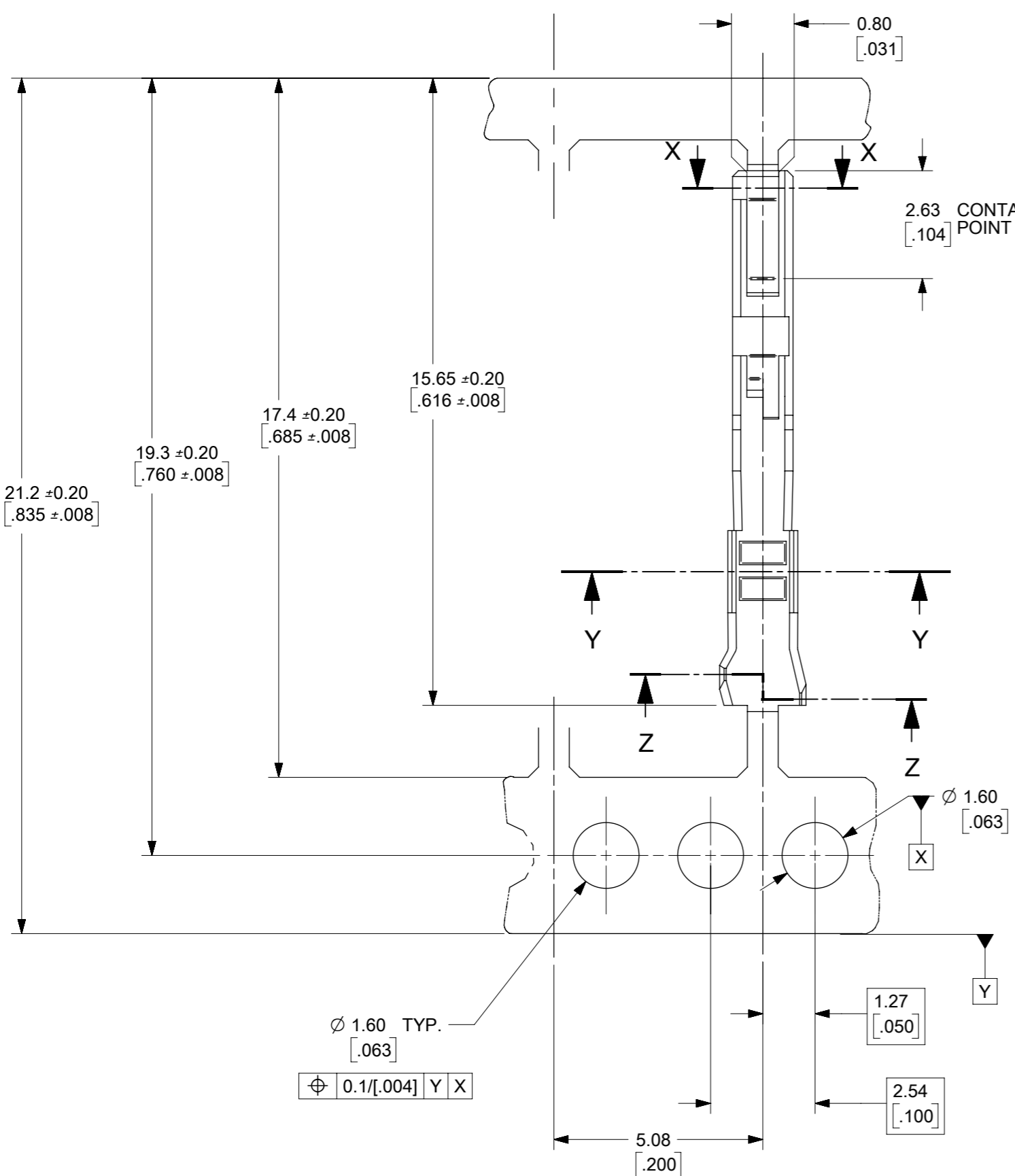
SECTION X-X



SECTION Z-Z  
INSULATION BARREL



SECTION Y-Y  
WIRE BARREL



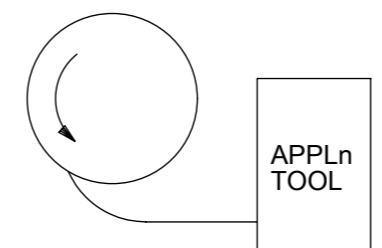
**NOTES:**

1. MATERIAL -  
PHOSPHOR BRONZE CDA 521  
THICKNESS : 0.200/[.008]  
TENSILE STRENGTH = 655 ~ 760 N/mm<sup>2</sup>  
PLATING - SEE SHEET 2
2. FOR DIMENSION A,B,C,D,F & G  
SEE SHEET 2
3. FOR WIRE SIZE & INSULATION DIA  
SEE SHEET 2
4. THIS TERMINAL TO MATE WITH  
0.635 / [.025] SQUARE PIN
5. MAX BURR AFTER CUT-OFF  
0.025 / [.001]

THIS DRAWING CONTAINS INFORMATION THAT IS PROPRIETARY TO MOLEX ELECTRONIC TECHNOLOGIES, LLC AND SHOULD NOT BE USED WITHOUT WRITTEN PERMISSION		CURRENT REV DESC: DATUM ADD FOR TP		<b>molex</b>	
DIMENSION UNITS mm/[in]	SCALE NTS				
GENERAL TOLERANCES (UNLESS SPECIFIED)				PRODUCT CUSTOMER DRAWING	
4 PLACES ±	MM INCH	EC NO: 607190	2018/11/02	DOCUMENT NUMBER	DOC TYPE DOC PART REVISION
3 PLACES ±	± 0.004	DRWN: RMV02	2019/04/01	SD-90119	PSD 001 M
2 PLACES ±	± 0.1	CHK'D: GJEEVANSURES	2019/04/02	MATERIAL NUMBER CUSTOMER	
1 PLACE ±	± 0.2	APPR: ISHWARG		SEE TABLE	GENERAL MARKET
0 PLACES ±	±	INITIAL REVISION:		SHEET NUMBER	
ANGULAR TOL ± 0.5°		DRWN: NPC	1987/08/27	1 OF 2	
		APPR: MLOMG	2011/07/04		
DRAFT WHERE APPLICABLE MUST REMAIN WITHIN DIMENSIONS	THIRD ANGLE PROJECTION	DRAWING	SERIES		
		A3-SIZE	90119		

					CRIMP DIMENSION					
					WIRE BARREL			INSULATION BARREL		
PART No	PLATING	REELING	WIRE SIZE (AWG)	INSULATION RANGE	A ±0.15 ±[.006]	B ±0.15 ±[.006]	F ±0.15 ±[.006]	C ±0.15 ±[.006]	D ±0.15 ±[.006]	G ±0.15 ±[.006]
90119-0109	A	L.H FEED	22,24	1.02 ~ 1.47 [.040 ~ .058]	1.70 [.067]	1.70 [.067]	0.51 [.020]	2.10 [.083]	1.90 [.075]	0.70 [.028]
90119-0110	E									
90119-0111	F									
90119-0112	D									
90119-0120	A									
90119-0121	E									
90119-0122	F	LOOSE PIECE PARTS	26,28	0.76 ~ 1.22 [.030 ~ .048]	1.37 [.054]	1.37 [.054]	0.28 [.011]	2.00 [.079]	1.70 [.067]	0.60 [.024]
90119-0123	D									
90119-2109	A									
90119-2110	E									
90119-2111	F									
90119-2112	D									
90119-2120	A	LOOSE PIECE PARTS	26,28	0.76 ~ 1.22 [.030 ~ .048]	1.37 [.054]	1.37 [.054]	0.28 [.011]	2.00 [.079]	1.70 [.067]	0.60 [.024]
90119-2121	E									
90119-2122	F									
90119-2123	D									

TYPE	PLATING
A	PRE-PLATED HOT DIP TIN 1.0 TO 2.5 μm / [.00004 TO .0001 μin]
E	1.27 TO 1.78 μm / [.00005 TO .00007 μin] NICKEL OVERALL. 0.38 TO 0.64 μm / [.000015 TO .000025 μin] GOLD ON CONTACT AREA. 3.0 TO 5.0 μm / [.00012 to .0002 μin] TIN ON TERMINATION AREA.
F	1.27 TO 1.78 μm / [.00005 TO .00007 μin] NICKEL OVERALL. 0.38 TO 0.64 μm [.000015 TO .000025 μin] GOLD ON CONTACT AREA. 3.0 TO 5.0 μm / [.00012 TO .0002 μin] TIN ON TERMINATION AREA.
D	1.25 μm MIN NICKEL OVERALL. 0.05 μm ~ 0.10 μm GOLD FLASH ON CONTACT AREA 2.50 μm MIN TIN ON CRIMP AREA



L.H FEED

THIS DRAWING CONTAINS INFORMATION THAT IS PROPRIETARY TO MOLEX ELECTRONIC TECHNOLOGIES, LLC AND SHOULD NOT BE USED WITHOUT WRITTEN PERMISSION											
DIMENSION UNITS mm/[in]		SCALE NTS		CURRENT REV DESC: DATUM ADD FOR TP						<b>molex</b>	
GENERAL TOLERANCES (UNLESS SPECIFIED)				EC NO: 607190 DRWN: RMV02 2018/11/02 CHK'D: GJEEVANSURES 2019/04/01 APPR: ISHWARG 2019/04/02							
				C-GRID III FEMALE CRIMP TERMINAL						PRODUCT CUSTOMER DRAWING	
4 PLACES ±		±		INITIAL REVISION:						DOCUMENT NUMBER	
3 PLACES ±		± 0.004		DRWN: NPC 1987/08/27						SD-90119	
2 PLACES ±		± 0.1		APPR: MLOMG 2011/07/04						PSD 001 M	
1 PLACE ±		± 0.2		DRAFT WHERE APPLICABLE MUST REMAIN WITHIN DIMENSIONS						SHEET NUMBER	
0 PLACES ±		±		THIRD ANGLE PROJECTION		DRAWING		SERIES		MATERIAL NUMBER	
ANGULAR TOL ± 0.5°				A3-SIZE		90119		SEE TABLE		GENERAL MARKET	

DOCUMENT STATUS	P1	RELEASE DATE	2019/04/02	04:31:41
-----------------	----	--------------	------------	----------