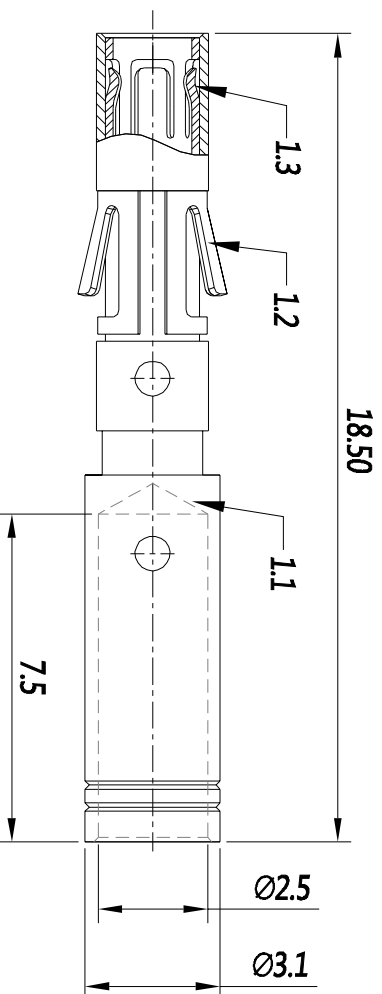


REVISIONS				
REV	ECO	DESCRIPTION	DATE	BY APPR
B1	-	RELEASED DRAWING	JULY-1-2014	BEN TOMMY



NOTES : (UNLESS OTHERWISE SPECIFIED)

1. MATERIAL :

- 1.1. CONTACT BODY : COPPER ALLOY.
- 1.2. POSITIONING CLIP : COPPER ALLOY.
- 1.3. CROWN CONTACTS : COPPER ALLOY.

2. SPECIFICATIONS :

- 2.1 CURRENT RATING : 13A(MAX).
- 2.2 TERMINATION TYPE : CRIMPING.
- 2.3 WIRE RANGE : 16~14AWG.

3. SUITABLE SOCKET TYPE : MP14M23XX.

4. ROHS COMPLIANT.

5. ALL DIMENSIONS ARE FOR REFERENCE USE ONLY.

P/N	CONTACT PLATING(MATING AREA)
MS14M23T	TIN PLATING OVER NICKEL.
MS14M23S	SILVER PLATING OVER NICKEL.
MS14M23F	GOLD FLASH PLATING OVER NICKEL.
MS14M23G10	10µ" GOLD PLATING OVER NICKEL.
MS14M23G15	15µ" GOLD PLATING OVER NICKEL.
MS14M23G30	30µ" GOLD PLATING OVER NICKEL.

QUANTITY	PART NUMBER	DESCRIPTION	ITER
MATERIALS LIST			

UNLESS OTHERWISE SPECIFIED 1) All dimensions are in millimeters. 2) Tolerances are as follows: 1 Pt. DEC 2d 30 2 Pt. DEC 2d 30 3 Pt. DEC 2d 48 3) Note reference =	DRAWN:	DATE:	Amphenol Sine Systems - www.amphenol-sine.com 44724 Monkey Drive Clinton Township, MI 48038
	DESIGNED:	APPROVAL:	
	ENGINEER:	CUSTOMER:	

PROCESS SPECIFICATIONS:	THIS DRAWING IS SUPPLIED FOR SPECIFICATIONS AND PERFORMANCE DATA. THE DRAWING IS NOT TO BE USED FOR REPRODUCTION AND ALL RIGHTS OF REPRODUCTION ARE RESERVED. ALL MANUFACTURING VARIATION.	SIZE TYPE	SCALE	SHEET	OF
NEXT ASST:		B C-	NONE	1	1

ECO-MATE SOCKET CONTACT MACHINE, 16-14AWG, SIZE 16

MS14M23XX	REV: B1	DWG NO:	16	SIZE:	16-14AWG
-----------	---------	---------	----	-------	----------