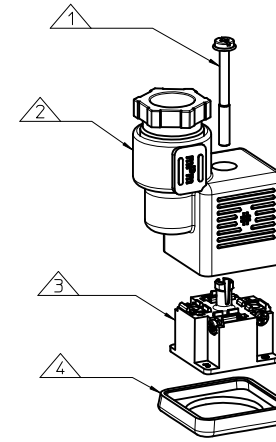
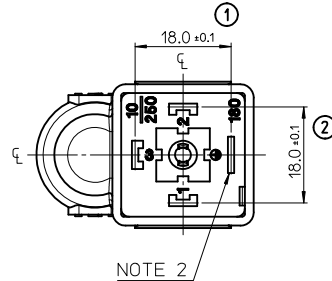
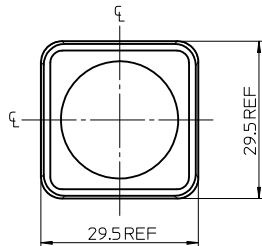
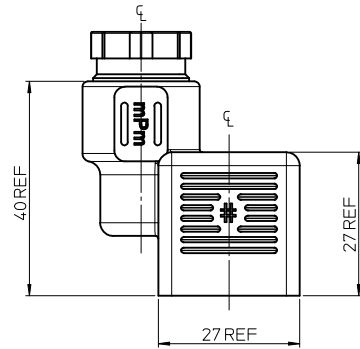
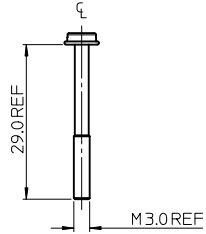


| PART No.   | mPm PART No. | DESCRIPTION                                |
|------------|--------------|--|
| 1210230497 | C40209N22    | TYPE A 2P PG9 BLACK NBR FLAT GASKET        |
| 1210230505 | C4021N21     | TYPE A 2P PG11 BLACK NBR PROFILE GASKET    |
| 1210230514 | C40309N22    | TYPE A 3P PG9 BLACK NBR FLAT GASKET        |
| 1210230521 | C4031N21     | TYPE A 3P PG11 BLACK NBR PROFILE GASKET    |
| 1210230805 | C4031W21     | TYPE A 3P PG11 BLACK V0 NBR PROFILE GASKET |
| 1210230496 | C40209N21    | TYPE A 2P PG9 BLACK NBR PROFILE GASKET     |
| 1210230513 | C40309N21    | TYPE A 3P PG9 BLACK NBR PROFILE GASKET     |



| ITEM | DESCRIPTION     |
|------|-----------------|
| 1    | SCREW           |
| 2    | COVER ASSEMBLY  |
| 3    | INSERT ASSEMBLY |
| 4    | GASKET          |



C40209N22

SERIES \_\_\_\_\_  
 C40= INTERNAL THREAD FORM A  
 POLES \_\_\_\_\_  
 2= 2 POLE & 3= 3 POLE  
 THREAD SIZE \_\_\_\_\_  
 09= PG9 11= PG11, M2= M12x1.5, M6= M16x1.5  
 MATERIAL AND HOUSING COLOUR \_\_\_\_\_  
 G= PA6 GRAY, N= PA6 BLACK, W= PA6 BLACK V0, T= PA12 TRANSPARENT  
 GROUND POSITION \_\_\_\_\_  
 0= UNMOUNTED, 2= H12, 3= H3, 6= H6, 9= H9  
 SCREW AND GASKET \_\_\_\_\_  
 1= NBR PROFILE GASKET & SCREW  
 2= NBR FLAT GASKET & SCREW  
 3= WHITE SILICON PROFILE GASKET & SCREW  
 4= WHITE SILICON FLAT GASKET & SCREW

NOTES

- PLEASE SEE CHART FOR CURRENTLY CONFIGURED PART NUMBERS. FOR SPECIFIC PART NUMBERS PLEASE CONTACT SALES OR CONSULT THE INTELLIGENT PART NUMBERS IN THE TABLE ATTACHED.
- EARTH POSITION SHOWN, H12
- FOR PACKAGING SEE PACKAGING SPEC PK-121023-C40
- PRODUCT SPEC: PS-121201-001

LAST INSPECTION NUMBER 2

|  |                               |                                       |      |   |                    |                                     |                        |                        |  |  |
|--|-------------------------------|---------------------------------------|------|---|--------------------|-------------------------------------|------------------------|------------------------|--|--|
| ORIGINAL RELEASE<br>EC NO: WEU2011-0576<br>DRWN: JOCONNOR 2011/05/12<br>CHKD: CHIKO<br>APPR: EFOLAN 2011/05/27 | QUALITY SYMBOLS<br>▽=0<br>▽=0 | GENERAL TOLERANCES (UNLESS SPECIFIED) |      | DIMENSION STYLE<br>MM ONLY  |                    | SCALE<br>1.5:1                      | DESIGN UNITS<br>METRIC | THIRD ANGLE PROJECTION |  |  |
|  |                               | mm                                    | INCH | DRAWN BY<br>JOCONNOR  | DATE<br>2011/05/12 | TITLE<br>C40 SERIES INTERNAL THREAD |                        |                        |  |  |
| A  | DESCRIPTION<br>REV            | 4 PLACES ±---                         | ±--- | CHECKED BY<br>DMAHER  | DATE<br>2011/05/12 | MATERIAL NO. SD-121023-003          |                        |                        |  |  |
|  |                               | 3 PLACES ±---                         | ±--- | APPROVED BY<br>EFOLAN   | DATE<br>2011/05/27 | DOCUMENT NO. 1 OF 1                 |                        |                        |  |  |
|  |                               | 2 PLACES ±0.1                         | ±--- | SEE CHART   |                    |                                     |                        |                        |  |  |
|  |                               | 1 PLACE ±0.2                          | ±--- | THIS DRAWING CONTAINS INFORMATION THAT IS PROPRIETARY TO MOLEX INCORPORATED AND SHOULD NOT BE USED WITHOUT WRITTEN PERMISSION |                    |                                     |                        |                        |  |  |
| DRAFT WHERE APPLICABLE MUST REMAIN WITHIN DIMENSIONS   |                               |                                       |      |   |                    |                                     |                        |                        |  |  |