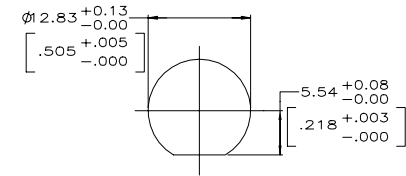
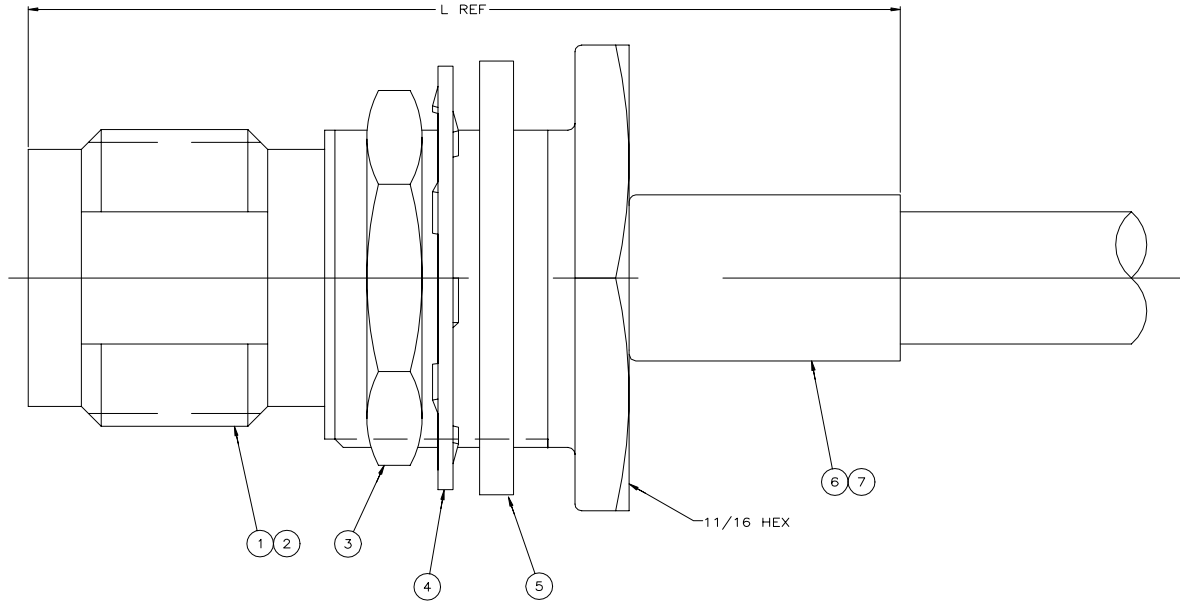
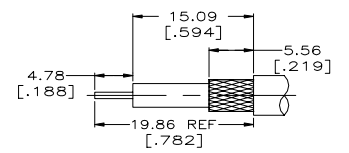


| REVISIONS | | | | | |
|-----------|----|---------------------------|-----------|-----|------|
| P | LR | DESCRIPTION | DATE | DRW | APPD |
| A | | REVISED PER ECR-20-008488 | 16JUN2020 | RZ | RS |

- △ USE HAND TOOL: 354940-1
- 2. MAXIMUM PANEL THICKNESS: 6.10 [.240]
- 3. SEE I.S. 9051
- △ OBSOLETE PARTS: OBSOLETE CIS STREAMLINING PER D.RENAUD/D.SINISI



RECOMMENDED PANEL CUTOUT
SCALE: 3:1



RECOMMENDED STRIP LENGTH
SCALE: 3:1

| OBsolete | RC-55/U, 55A/U, 55B/U, 223/U | 34.93 | 1.375 | 220189-1 | - | 9-329099-0 | 329633 | 1-329632-2 | 1-329631-2 | 221149-6 | 414169-1 | 5414168-8 |
|----------|---|-------|-------|----------|-------------------|-----------------|----------------|--------------------|-----------------|-----------------|-----------------------|-------------|
| | RC-142/U, 142A/U, 142B/U, 400/U | 34.93 | 1.375 | 220189-1 | - | 9-225382-0 | 329633 | 1-329632-2 | 1-329631-2 | 2-221149-6 | 414169-1 | 5414168-5 |
| | RC-188/U, 316/U TYPE DOUBLE BRAID | 34.93 | 1.375 | 58330-1 | 21427-4 | 9-329049-0 | 329633 | 1-329632-2 | 1-329631-2 | 2-221149-0 | 414169-3 | 5414168-4 |
| | RC-174/U, 188/U, 316/U | 34.93 | 1.375 | 220210-1 | 21427-4 | 9-328666-0 | 329633 | 1-329632-2 | 1-329631-2 | 2-221149-0 | 414169-3 | 5414168-3 |
| | RC-58/U, 58A/U, 58B/U, 58C/U, 141/U, 141A/U | 34.93 | 1.375 | 220189-1 | - | 9-50427-1 | 329633 | 1-329632-2 | 1-329631-2 | 221149-6 | 414169-1 | 5414168-1 |
| | FOR USE WITH CABLE | | L | DIE SET | △ 7 BUSHING QTY=1 | 6 FERRULE QTY=1 | 5 GASKET QTY=1 | 4 LOCKWASHER QTY=1 | 3 JAM NUT QTY=1 | 2 CONTACT QTY=1 | 1 JACK ASSEMBLY QTY=1 | PART NUMBER |

THIS DRAWING IS A CONTROLLED DOCUMENT.

| | |
|-----------------------------|--|
| DRW: ATTADIA - 31JUN2000 | DOCKS: 31JUN2000 |
| DR: HAVENER | 31JUN2000 |
| AVD: LIBERTY | NAME |
| PRODUCT SPEC: 108-12046 | JACK BULKHEAD, COMMERCIAL TNC |
| APPLICATION SPEC: 108-12046 | SIZE: CASE CODE: DRAWING NO: 00779 ©=5414168 |
| WEIGHT: 0.000000 | SCALE: 10:1 |
| CUSTOMER DRAWING | SHEET 1 OF 1 |

TE Connectivity