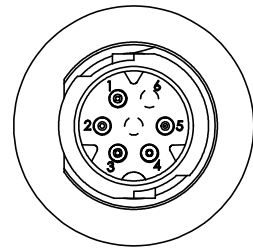
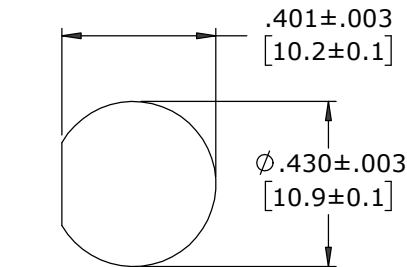


ASS'Y P/N	NO. OF CONTACTS	KEY STYLE
W17982-5PG-P-300	5 #26	A-KEY
W17982-6PG-P-300	6 #26	B-KEY
W17982-7PG-P-300	7 #26	A-KEY

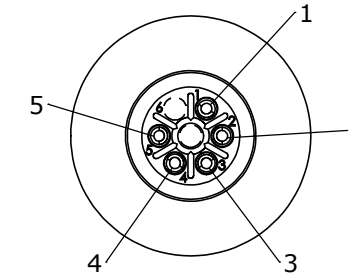
- NOTES:  
1. ALL PARTS TO BE BULK PACKED  
2. CONTACTS INSERTED INTO CONNECTOR WITH SOLDER CUPS FACING OUTWARD RADIALLY. THE CENTER CONTACT SHOULD BE FACING BETWEEN POSITION 1 AND 6  
3. ALL DIMENSIONS ARE REFERENCE EXCEPT THOSE WITH A TOLERANCE



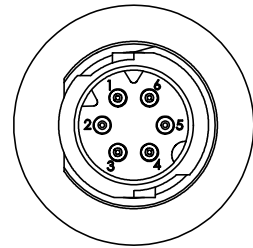
**FACE VIEW**  
W17982-5PG-P-300  
5 POSITION  
A-KEY



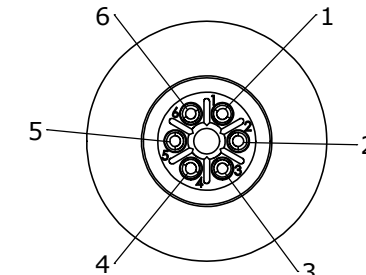
**RECCOMENDED  
PANEL CUT-OUT**



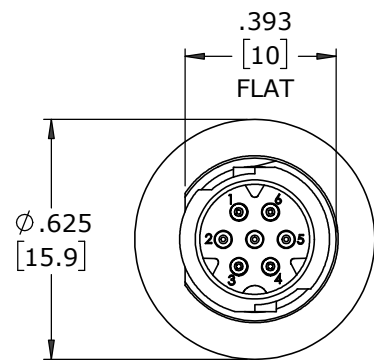
**WIRE VIEW**  
W17982-5PG-P-300



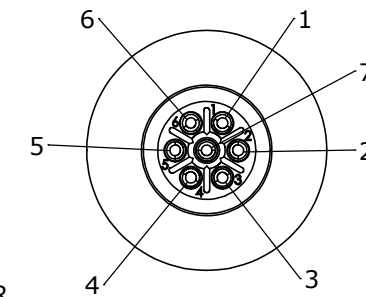
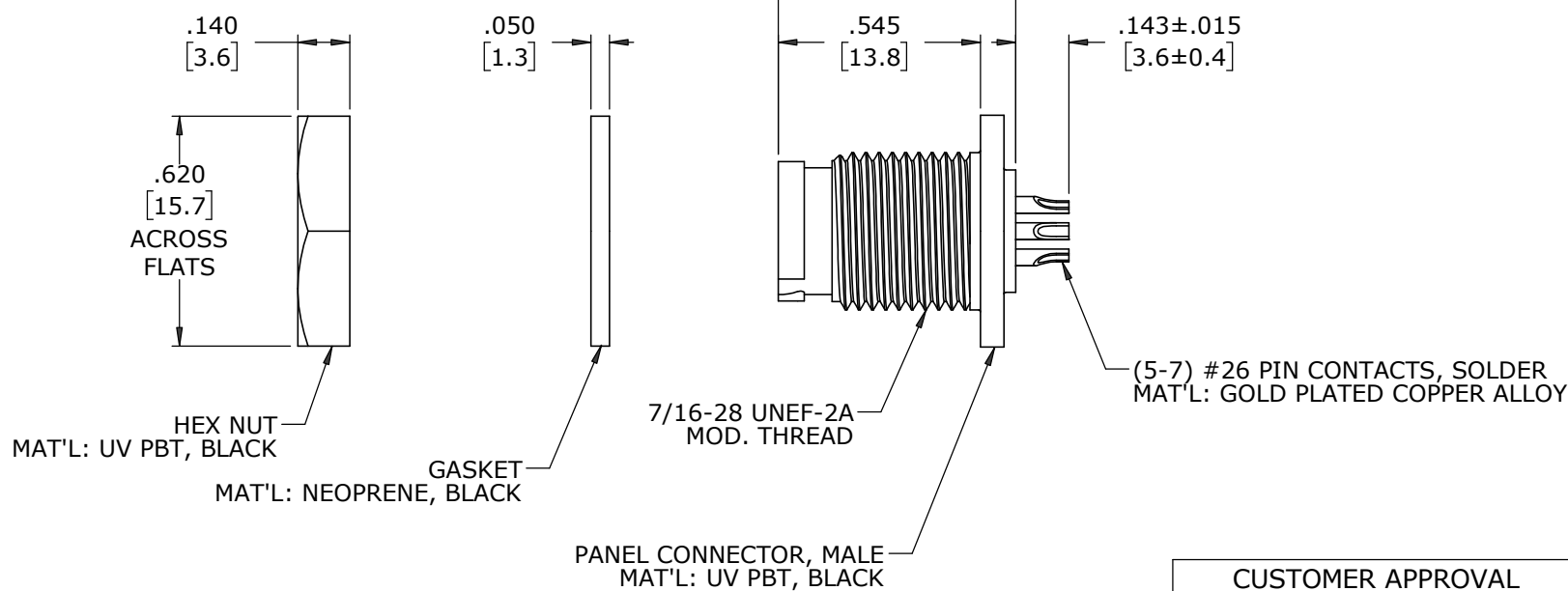
**FACE VIEW**  
W17982-6PG-P-300  
6 POSITION  
B-KEY



**WIRE VIEW**  
W17982-6PG-P-300



**FACE VIEW**  
W17982-7PG-P-300  
7 POSITION  
A-KEY



**WIRE VIEW**  
W17982-7PG-P-300

CUSTOMER PRINT

PART NUMBER: W17982-XPG-P-300

**CUSTOMER APPROVAL**

THIS DOCUMENT CONTAINS CONFIDENTIAL INFORMATION PROPRIETARY TO CONXALL CORPORATION. ANY REPRODUCTION, DISCLOSURE, OR USE OF THIS DOCUMENT /INFORMATION IS EXPRESSLY PROHIBITED UNLESS AUTHORIZED IN WRITING BY CONXALL CORPORATION.

APPROVED BY: \_\_\_\_\_  
DATE: \_\_\_\_\_

MA	08-10-20	RELEASED PER PDR 18004-2
A	JGK 8/14/19	DRAWING CREATED FOR PDR #18004
REV.	INIT.	DATE
	JGK	8/14/19
ALL INFORMATION ILLUSTRATED IS THE PROPERTY OF "CONXALL CORPORATION". UNAUTHORIZED DUPLICATION OR DISTRIBUTION OF THIS DOCUMENT IS PROHIBITED.		DESCRIPTION
ALL UNITS ARE IN FEET, INCHES, FRACTIONS OF INCHES AND DECIMALS.		TITLE:
APPROVED BY:		PANEL MOUNT ASSEMBLY
SCALE	SIZE	SHEET
NTS	B	1 OF 1
FILE:	DIRECTORY:	PART NUMBER:
W17982-XPG-P-300	SLW	W17982-XPG-P-300
- CRITICAL CHARACTERISTIC FLAG PER SPEC. XXXX		REV
		A

DIMENSIONS IN BRACKETS [ ] ARE IN MILLIMETERS UNLESS INDICATED

**RoHS COMPLIANT**